

# THE TRACEWOOD II



Exterior J

2,536 - 2,539 sq. ft.

4 Bedrooms

3 Full Baths

0 - 1 Half Baths

2 Car Garage



Exterior K



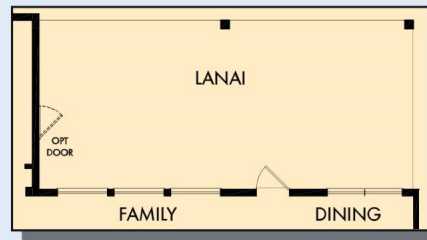
Exterior L

David Weekley  
Homes

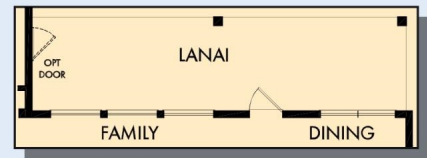


# THE TRACEWOOD II

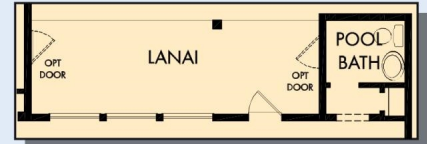
2,536 - 2,539 sq. ft. • 4 Bedrooms • 3 Full Baths • 0 - 1 Half Baths • 2 Car Garage



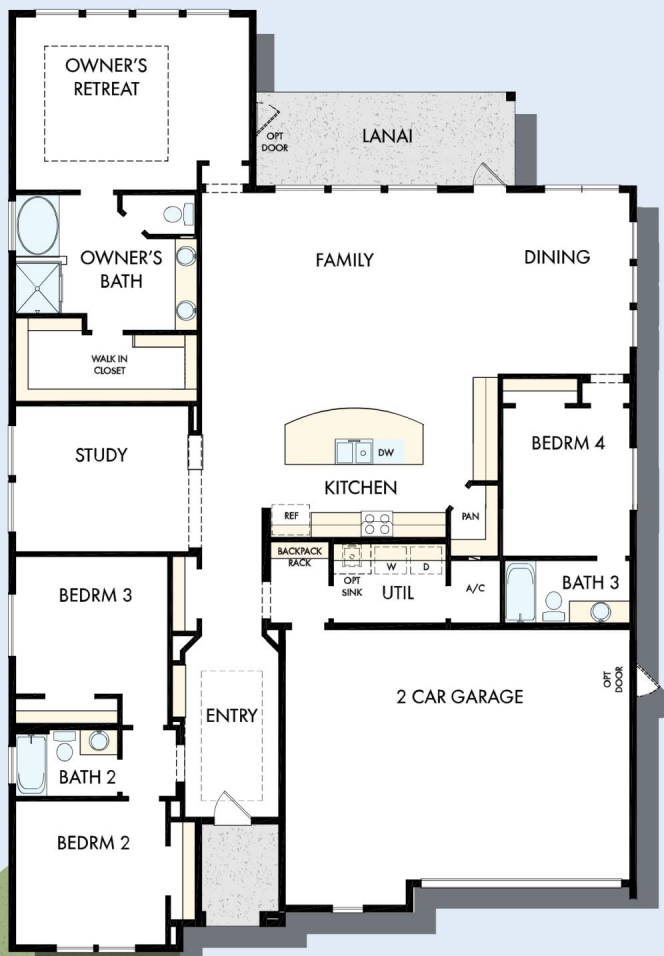
OPTIONAL SUPER EXTENDED LANAI AT DINING



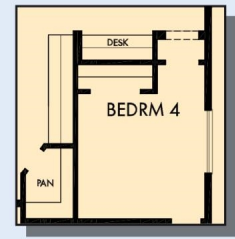
OPTIONAL EXTENDED LANAI AT DINING



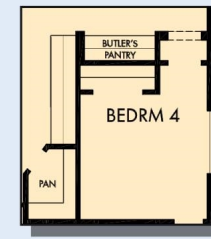
OPTIONAL LANAI WITH POOL BATH



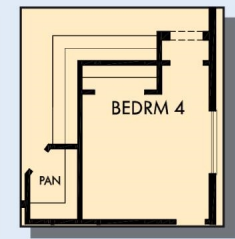
OPTIONAL SUPER SHOWER AT OWNER'S BATH



OPTIONAL DESK AT DINING



OPTIONAL BUTLER'S PANTRY AT DINING



OPTIONAL CABINETS AT DINING

7416 in 4487 JAC

For additional options, please visit [DavidWeekleyHomes.com](http://DavidWeekleyHomes.com)

6/25/2020



See a David Weekley Homes Sales Consultant for details. Prices, plans, dimensions, features, specifications, materials, and availability of homes or communities are subject to change without notice or obligation. Illustrations are artist's depictions only and may differ from completed improvements. Copyright © 2020 David Weekley Homes - All Rights Reserved. Jacksonville, FL

**DavidWeekleyHomes.com**