

THE CLIFFORD



Exterior A



Exterior B

2,327 - 2,812 sq. ft.

4 Bedrooms

2 Full Baths

1 - 2 Half Baths

2 Car Garage

Rich C.



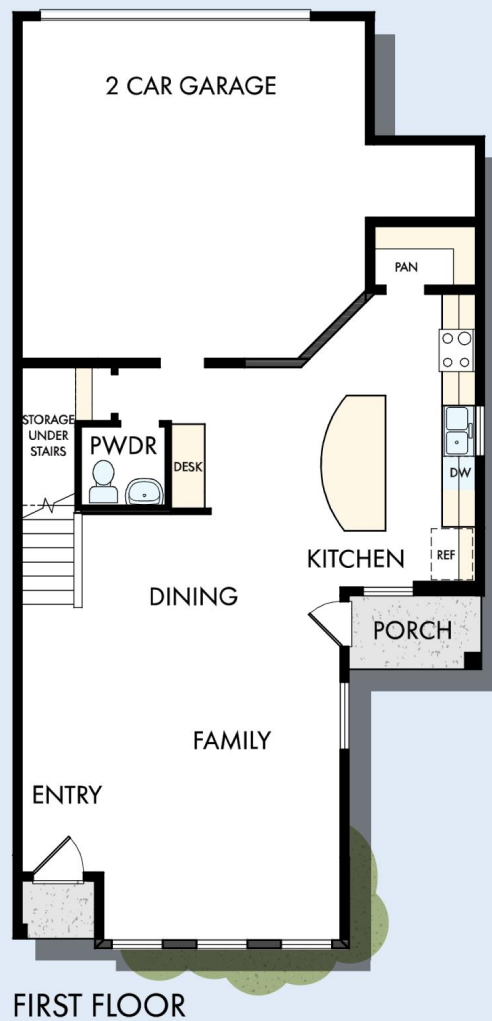
Wonderful Experience!

If there is anything that sets David Weekley apart from other builders it is their customer service. I felt like a member of the family from the first time I walked into the model, to when I received my keys and saw the wonderful housewarming presents that were left for me, up to the present when I see my salesman in the neighborhood. I felt like they really took the time to understand what I was looking for and then came through with my dream home. I would highly recommend David Weekley to anyone looking to buy and/or build a home.

CENTRAL LIVING
by **David Weekley Homes**

THE CLIFFORD

2,327 - 2,812 sq. ft. • 4 Bedrooms • 2 Full Baths • 1 - 2 Half Baths • 2 Car Garage



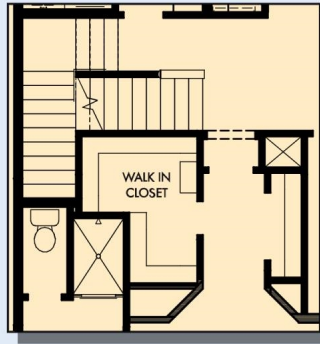
9724 in 1418 HOU

For additional options, please visit DavidWeekleyHomes.com

5/26/2020

CENTRAL LIVING
by David Weekley Homes

THE CLIFFORD



SECOND FLOOR WITH
OPTIONAL THIRD FLOOR BONUS



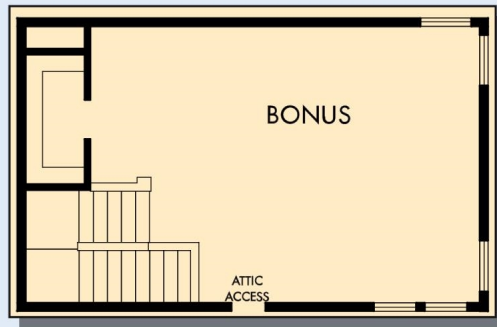
OPTIONAL SUPER
SHOWER AT
OWNER'S BATH



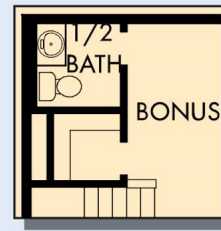
SECOND FLOOR

For additional options, please visit DavidWeekleyHomes.com

THE CLIFFORD



OPTIONAL THIRD FLOOR BONUS



OPTIONAL HALF BATH
AT BONUS

For additional options, please visit DavidWeekleyHomes.com



See a David Weekley Homes Sales Consultant for details. Prices, plans, dimensions, features, specifications, materials, and availability of homes or communities are subject to change without notice or obligation. Illustrations are artist's depictions only and may differ from completed improvements. Copyright © 2020 David Weekley Homes - All Rights Reserved. Houston, TX

CENTRAL LIVING
by David Weekley Homes