

THE IVERSON



7886CSC - A

Exterior A

2,466 sq. ft.

3 - 4 Bedrooms

2 Full Baths

1 Half Bath

2 Car Garage



7886CSC - B

Exterior B

Rich C.



Wonderful Experience!

If there is anything that sets David Weekley apart from other builders it is their customer service. I felt like a member of the family from the first time I walked into the model, to when I received my keys and saw the wonderful housewarming presents that were left for me, up to the present when I see my salesman in the neighborhood. I felt like they really took the time to understand what I was looking for and then came through with my dream home. I would highly recommend David Weekley to anyone looking to buy and/or build a home.

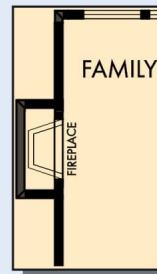
**David Weekley
Homes**

THE IVERSON

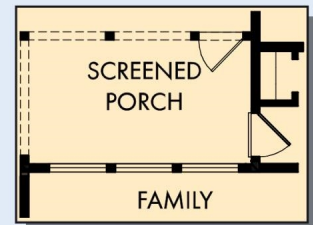
2,466 sq. ft. • 3 - 4 Bedrooms • 2 Full Baths • 1 Half Bath • 2 Car Garage



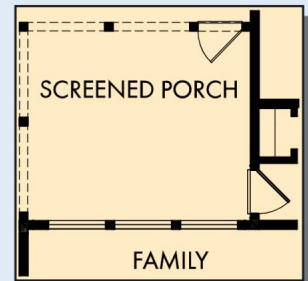
FIRST FLOOR



OPTIONAL WALL
FIREPLACE AT
FAMILY



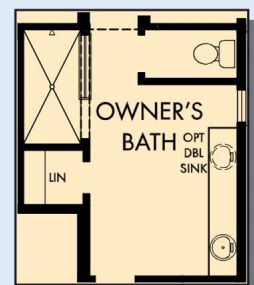
OPTIONAL SCREENED PORCH
AT FAMILY



OPTIONAL EXTENDED
SCREENED PORCH AT FAMILY

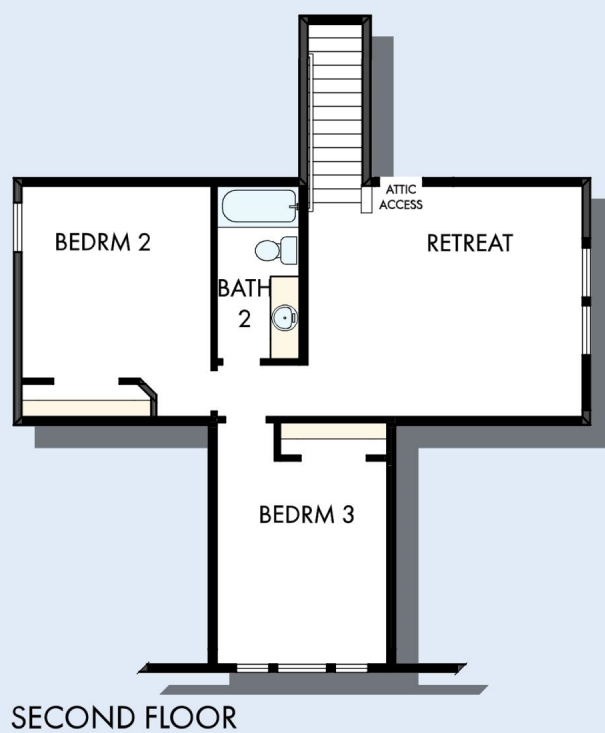


OPTIONAL SEPARATE
TUB AND SHOWER
AT OWNER'S BATH



OPTIONAL SUPER
SHOWER AT OWNER'S
BATH

THE IVERSON



For additional options, please visit DavidWeekleyHomes.com



See a David Weekley Homes Sales Consultant for details. Prices, plans, dimensions, features, specifications, materials, and availability of homes or communities are subject to change without notice or obligation. Illustrations are artist's depictions only and may differ from completed improvements. Copyright © 2019 David Weekley Homes - All Rights Reserved. Charleston, SC

DavidWeekleyHomes.com