

# THE JEWEL



Exterior B

2,731 - 3,010 sq. ft.

4 Bedrooms

3 Full Baths

2 Car Garage



4275 DAL - H

Exterior H

**Rich C.**



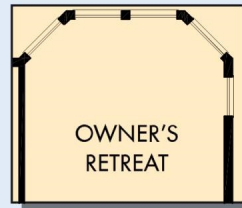
### **Wonderful Experience!**

If there is anything that sets David Weekley apart from other builders it is their customer service. I felt like a member of the family from the first time I walked into the model, to when I received my keys and saw the wonderful housewarming presents that were left for me, up to the present when I see my salesman in the neighborhood. I felt like they really took the time to understand what I was looking for and then came through with my dream home. I would highly recommend David Weekley to anyone looking to buy and/or build a home.

**David Weekley  
Homes**

# THE JEWEL

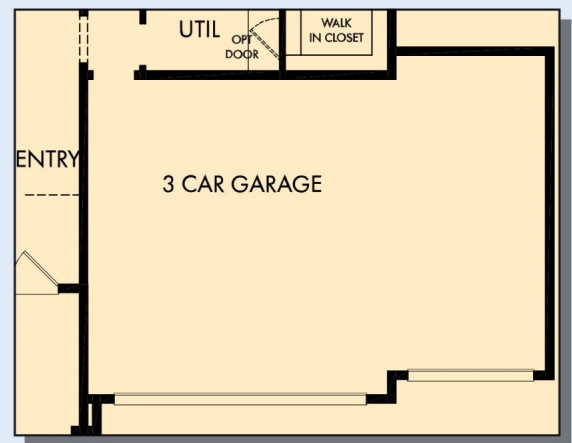
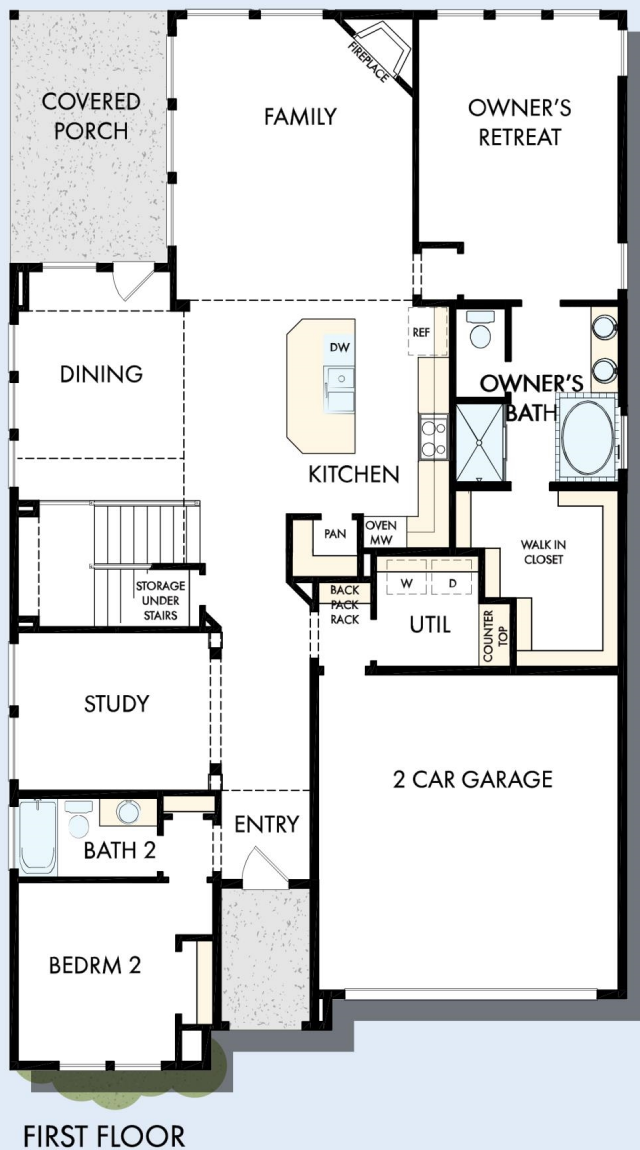
2,731 - 3,010 sq. ft. • 4 Bedrooms • 3 Full Baths • 2 Car Garage



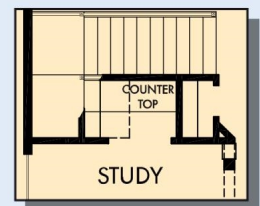
OPTIONAL BAY WINDOW  
AT OWNER'S RETREAT



OPTIONAL SUPER  
SHOWER AT  
OWNER'S BATH



OPTIONAL 3 CAR GARAGE



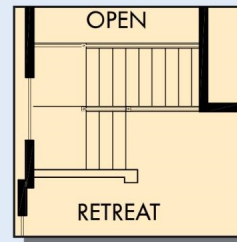
OPTIONAL POCKET  
OFFICE AT STUDY



# THE JEWEL



OPTIONAL GAME ROOM  
AT STAIRS



OPTIONAL POCKET OFFICE  
2 RETREAT AT RETREAT



SECOND FLOOR

For additional options, please visit [DavidWeekleyHomes.com](http://DavidWeekleyHomes.com)



See a David Weekley Homes Sales Consultant for details.  
Prices, plans, dimensions, features, specifications, materials,  
and availability of homes or communities are subject to  
change without notice or obligation. Illustrations are artist's  
depictions only and may differ from completed improvements.  
Copyright © 2020 David Weekley Homes - All Rights Reserved.  
Dallas/Ft. Worth, TX

## DavidWeekleyHomes.com