

# THE SAN VINCENTE



Exterior E

2,821 - 2,847 sq. ft.

4 Bedrooms

3 - 4 Full Baths

1 - 2 Half Baths

3 Car Garage



Exterior F

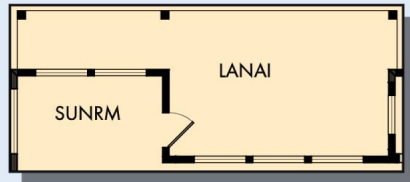


Exterior G

David Weekley  
Homes

# THE SAN VINCENTE

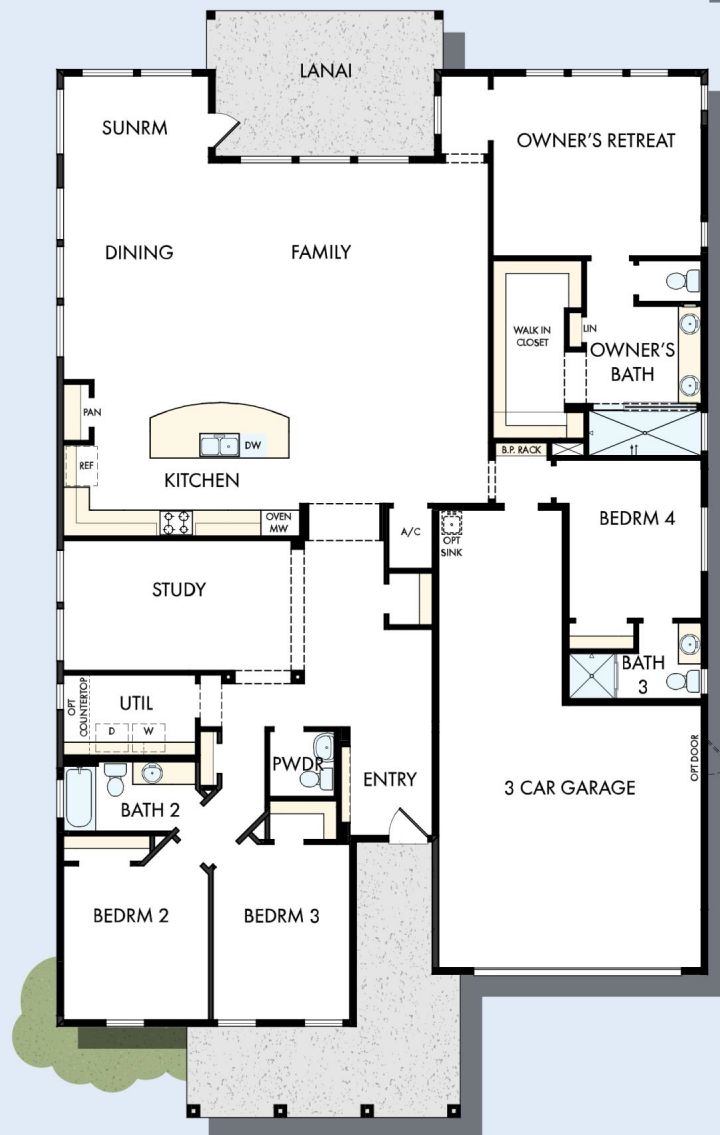
2,821 - 2,847 sq. ft. • 4 Bedrooms • 3 - 4 Full Baths • 1 - 2 Half Baths • 3 Car Garage



OPTIONAL EXTENDED LANAI



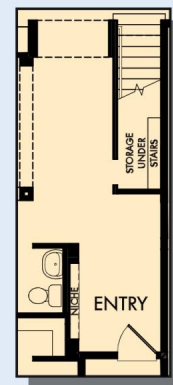
OPTIONAL GUEST SUITE  
AT BEDROOM 2 AND 3



FIRST FLOOR



OPTIONAL SEPARATE  
TUB AND SHOWER  
AT OWNER'S BATH



FIRST FLOOR WITH  
OPTIONAL BONUS

7479 in 4481 JAC

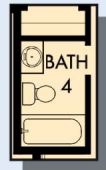
For additional options, please visit [DavidWeekleyHomes.com](http://DavidWeekleyHomes.com)

10/7/2019

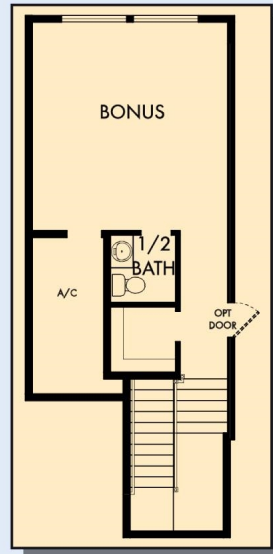
**DavidWeekleyHomes.com**



# THE SAN VINCENTE



OPTIONAL  
BATH 4



OPTIONAL BONUS

For additional options, please visit [DavidWeekleyHomes.com](http://DavidWeekleyHomes.com)



See a David Weekley Homes Sales Consultant for details.  
Prices, plans, dimensions, features, specifications, materials,  
and availability of homes or communities are subject to  
change without notice or obligation. Illustrations are artist's  
depictions only and may differ from completed improvements.  
Copyright © 2019 David Weekley Homes - All Rights Reserved.  
Jacksonville, FL

## DavidWeekleyHomes.com