

THE BREMOND



Exterior A

2,382 - 4,778 sq. ft.

3 - 6 Bedrooms

2 - 4 Full Baths

3 Car Garage



Exterior B

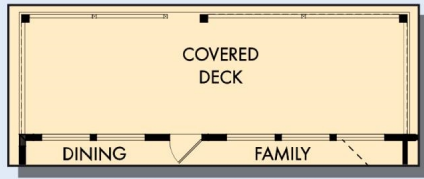


Exterior C

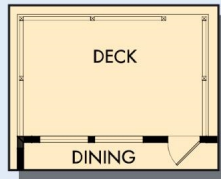
David Weekley
Homes

THE BREMOND

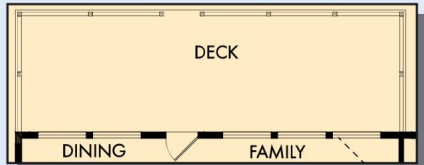
2,382 - 4,778 sq. ft. • 3 - 6 Bedrooms • 2 - 4 Full Baths • 3 Car Garage



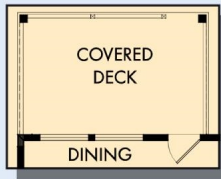
OPTIONAL EXTENDED COVERED DECK AT DINING AND FAMILY



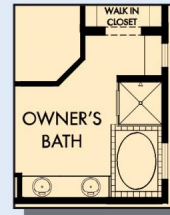
OPTIONAL DECK AT DINING



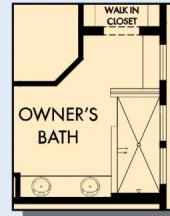
OPTIONAL EXTENDED DECK AT DINING AND FAMILY



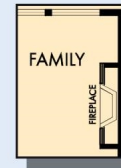
OPTIONAL COVERED DECK AT DINING



OPTIONAL DROP IN TUB WITH SEPARATE SHOWER AT OWNER'S BATH



OPTIONAL SUPER SHOWER AT OWNER'S BATH

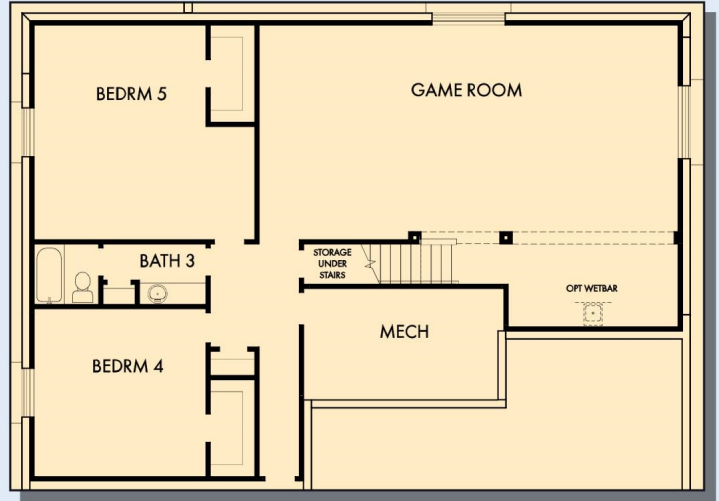


OPTIONAL WALL FIREPLACE AT FAMILY

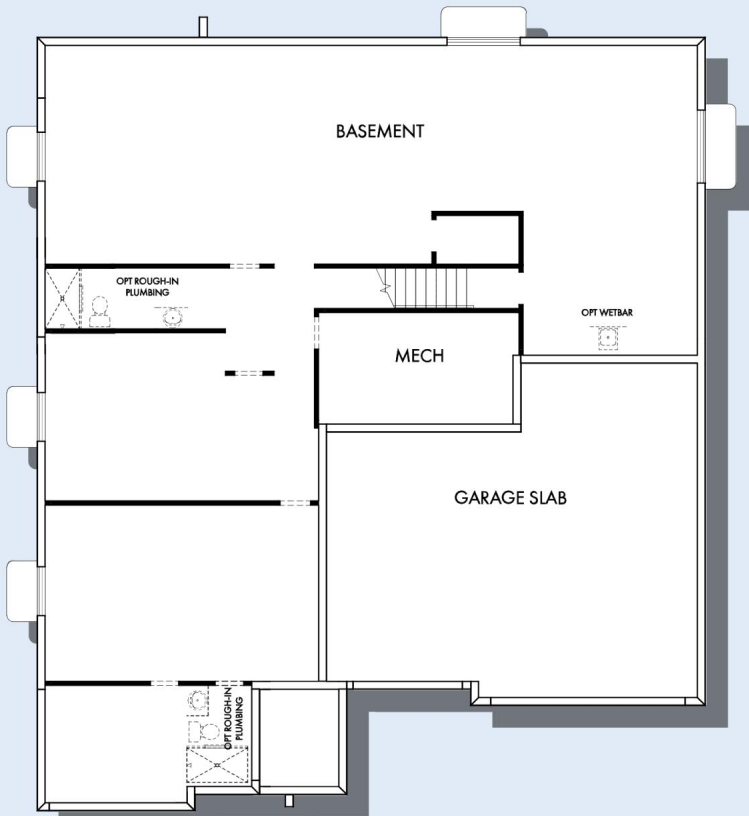


FIRST FLOOR

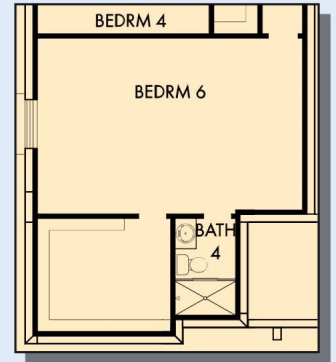
THE BREMOND



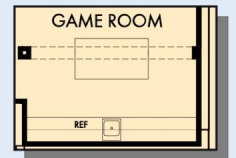
OPTIONAL GAME ROOM WITH BEDROOM 4,5 AND BATH 3 AT BASEMENT



BASEMENT FLOOR



OPTIONAL BEDROOM 6 WITH BATH 4 STORAGE



OPTIONAL WET BAR AT GAME ROOM

For additional options, please visit DavidWeekleyHomes.com

See a David Weekley Homes Sales Consultant for details. Prices, plans, dimensions, features, specifications, materials, and availability of homes or communities are subject to change without notice or obligation. Illustrations are artist's depictions only and may differ from completed improvements. Copyright © 2024 David Weekley Homes - All Rights Reserved. Salt Lake City, UT

DavidWeekleyHomes.com

