

THE HASLER



4130 SAN - C

Exterior C

2,304 - 2,316 sq. ft.

3 - 4 Bedrooms

2 - 3 Full Baths

1 Half Bath

2 Car Garage



4130 SAN - D

Exterior D

Crystal W.



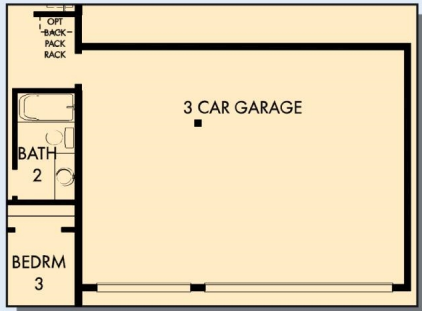
Welcome Home

My DWHome's experience has been truly 5-stars! From a floorplan concept, reserving a lot filled with dirt, the homebuilding project, to "Welcome Home", the entire process has been amazing. The team provided regular feedback and were always available to address questions and concerns. I was sold on the quality features. The entire team's availability and service has been exceptional before and after closing. Looking forward to enjoying our new home and neighbors for many years to come!

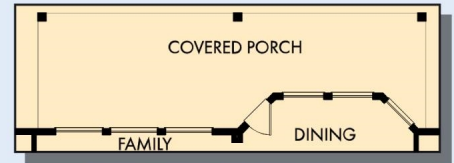
**David Weekley
Homes**

THE HASLER

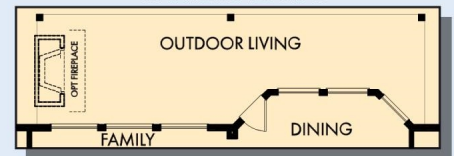
2,304 - 2,316 sq. ft. • 3 - 4 Bedrooms • 2 - 3 Full Baths • 1 Half Bath • 2 Car Garage



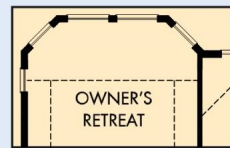
OPTIONAL 3 CAR GARAGE



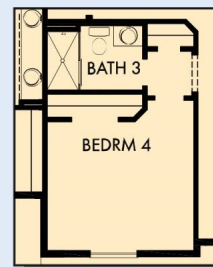
OPTIONAL EXTENDED COVERED PORCH AT FAMILY AND DINING



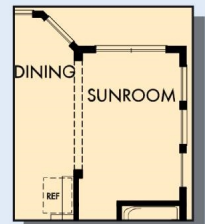
OPTIONAL OUTDOOR LIVING AT FAMILY AND DINING



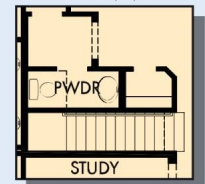
OPTIONAL BAY WINDOW AT OWNER'S RETREAT



OPTIONAL BEDROOM 4 WITH BATH 3 AT STUDY



OPTIONAL SUNROOM AT DINING

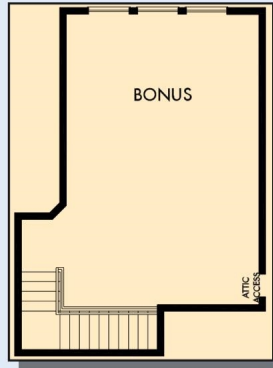


FIRST FLOOR WITH OPTIONAL SECOND FLOOR BONUS

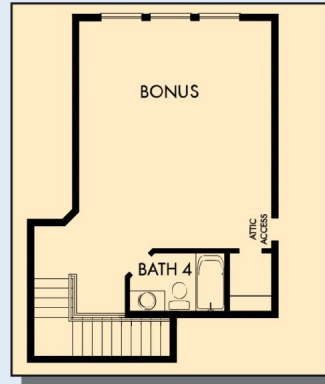


FIRST FLOOR

THE HASLER



OPTIONAL SECOND FLOOR BONUS



OPTIONAL SECOND FLOOR BONUS
WITH BATH 4

For additional options, please visit DavidWeekleyHomes.com

See a David Weekley Homes Sales Consultant for details.
Prices, plans, dimensions, features, specifications, materials,
and availability of homes or communities are subject to
change without notice or obligation. Illustrations are artist's
depictions only and may differ from completed improvements.
Copyright © 2024 David Weekley Homes - All Rights Reserved.
San Antonio, TX

DavidWeekleyHomes.com

