

THE WILMETTE



8375 CTX - A

Exterior A

2,104 - 2,969 sq. ft.

3 - 5 Bedrooms

2 - 4 Full Baths

0 - 2 Half Baths

2 Car Garage



8375 CTX - B

Exterior B

Rich C.



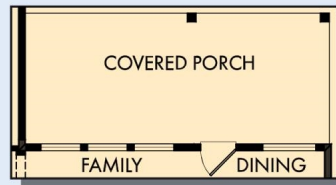
Wonderful Experience!

If there is anything that sets David Weekley apart from other builders it is their customer service. I felt like a member of the family from the first time I walked into the model, to when I received my keys and saw the wonderful housewarming presents that were left for me, up to the present when I see my salesman in the neighborhood. I felt like they really took the time to understand what I was looking for and then came through with my dream home. I would highly recommend David Weekley to anyone looking to buy and/or build a home.

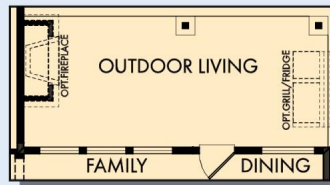
**David Weekley
Homes**

THE WILMETTE

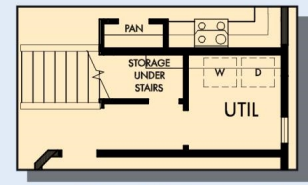
2,104 - 2,969 sq. ft. • 3 - 5 Bedrooms • 2 - 4 Full Baths • 0 - 2 Half Baths • 2 Car Garage



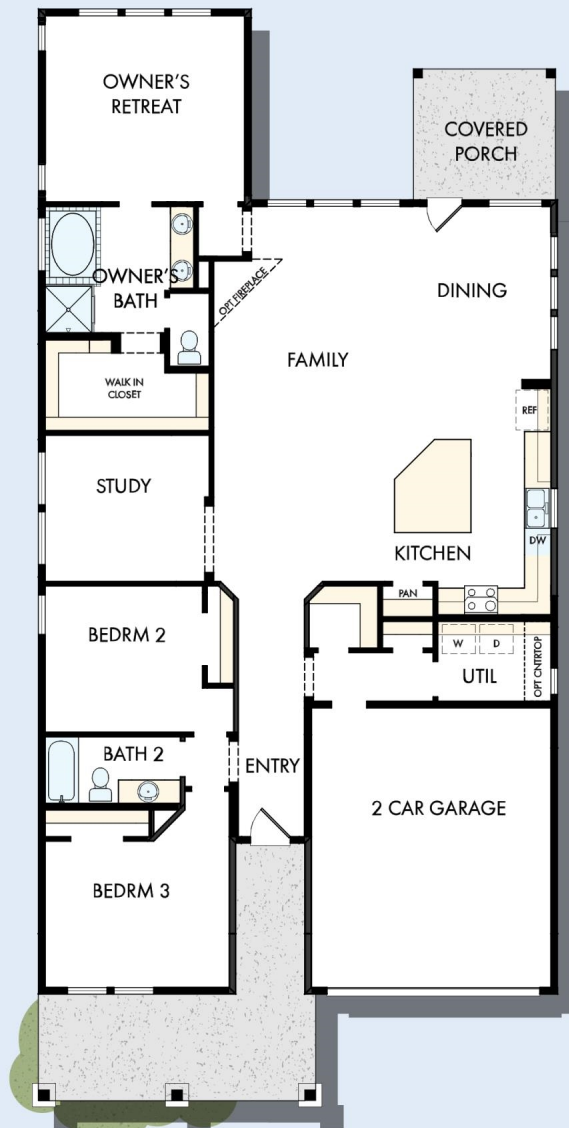
OPTIONAL EXTENDED COVERED PORCH
AT DINING



OPTIONAL OUTDOOR LIVING
AT DINING



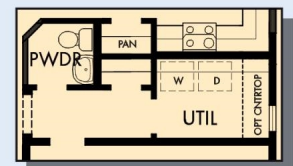
FIRST FLOOR WITH OPTIONAL
SECOND FLOOR BONUS



OPTIONAL EXTENDED
OWNER'S RETREAT

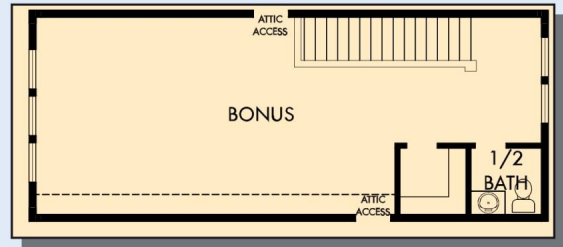


OPTIONAL SUPER
SHOWER
AT OWNER'S BATH

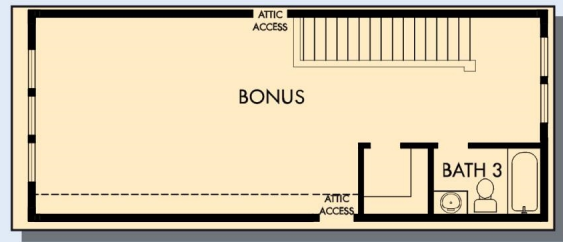


OPTIONAL POWDER BATH
AT HALL CLOSET

THE WILMETTE



OPTIONAL SECOND FLOOR BONUS WITH HALF BATH



OPTIONAL SECOND FLOOR BONUS WITH BATH 3

For additional options, please visit DavidWeekleyHomes.com



See a David Weekley Homes Sales Consultant for details. Prices, plans, dimensions, features, specifications, materials, and availability of homes or communities are subject to change without notice or obligation. Illustrations are artist's depictions only and may differ from completed improvements. Copyright © 2021 David Weekley Homes - All Rights Reserved. Austin, TX

DavidWeekleyHomes.com