

THE SWEETEA



Exterior A



Exterior B

2,524 sq. ft.

4 Bedrooms

2 Full Baths

1 Half Bath

2 Car Garage

Rich C.



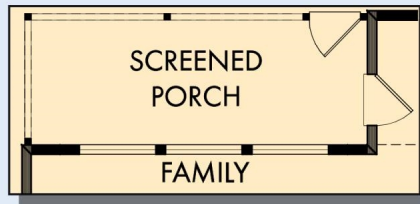
Wonderful Experience!

If there is anything that sets David Weekley apart from other builders it is their customer service. I felt like a member of the family from the first time I walked into the model, to when I received my keys and saw the wonderful housewarming presents that were left for me, up to the present when I see my salesman in the neighborhood. I felt like they really took the time to understand what I was looking for and then came through with my dream home. I would highly recommend David Weekley to anyone looking to buy and/or build a home.

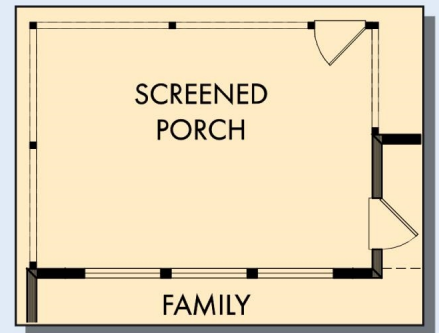
**David Weekley
Homes**

THE SWEETEA

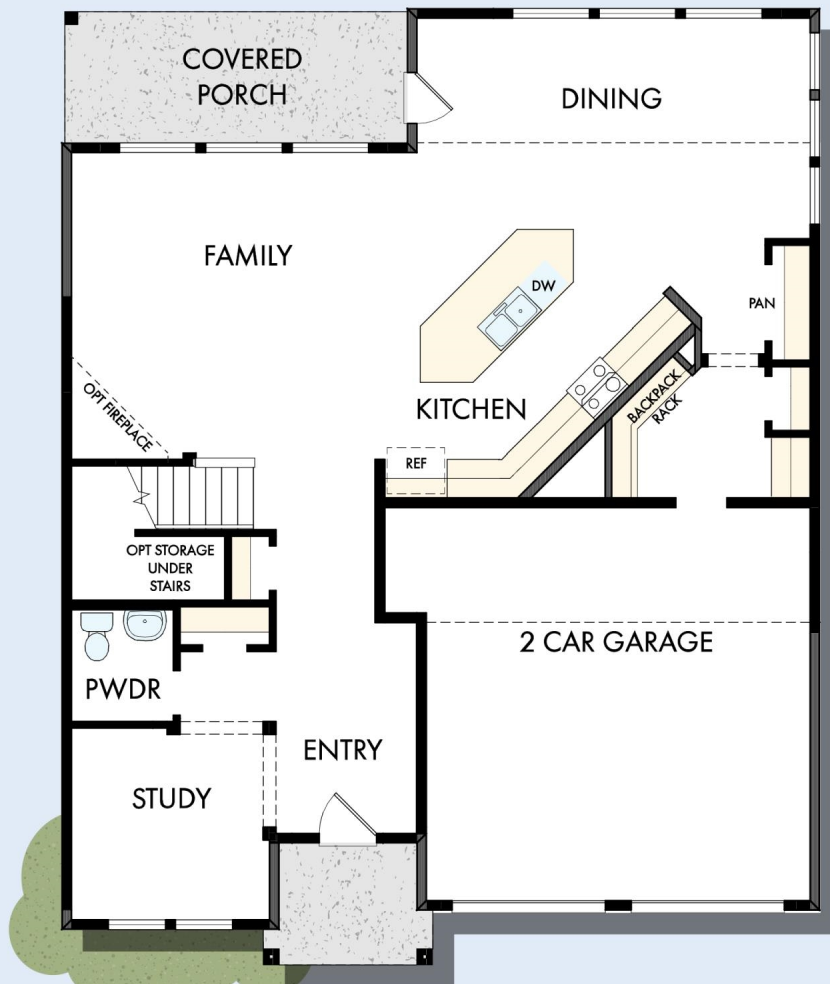
2,524 sq. ft. • 4 Bedrooms • 2 Full Baths • 1 Half Bath • 2 Car Garage



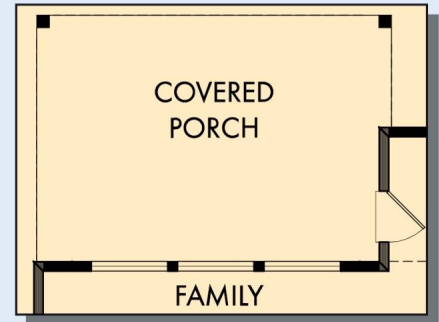
OPTIONAL SCREENED PORCH
AT FAMILY



OPTIONAL EXTENDED SCREENED
PORCH AT FAMILY



FIRST FLOOR



OPTIONAL EXTENDED COVERED
PORCH AT FAMILY

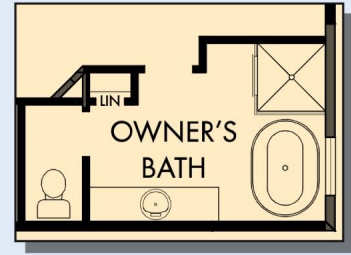
THE SWEETEA



OPTIONAL DROP IN TUB
WITH SEPARATE SHOWER
AT OWNER'S BATH



OPTIONAL SUPER SHOWER
AT OWNER'S BATH



OPTIONAL FREE-STANDING
TUB WITH SEPARATE SHOWER
AT OWNER'S BATH



SECOND FLOOR

For additional options, please visit DavidWeekleyHomes.com

See a David Weekley Homes Sales Consultant for details. Prices, plans, dimensions, features, specifications, materials, and availability of homes or communities are subject to change without notice or obligation. Illustrations are artist's depictions only and may differ from completed improvements. Copyright © 2023 David Weekley Homes - All Rights Reserved. Charleston, SC

DavidWeekleyHomes.com

