

THE ELIAS



Exterior A



Exterior B

1,882 - 2,519 sq. ft.

4 - 5 Bedrooms

2 - 3 Full Baths

1 Half Bath

2 - 3 Car Garage

Crystal W.



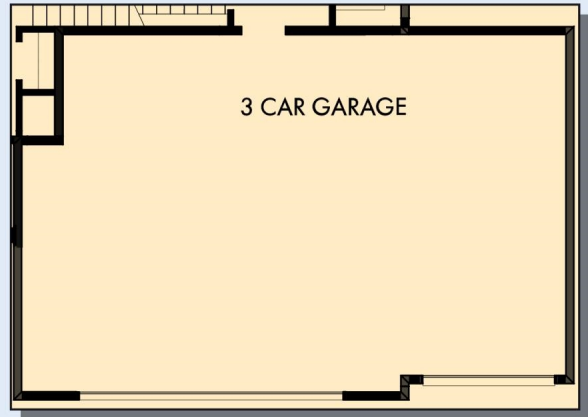
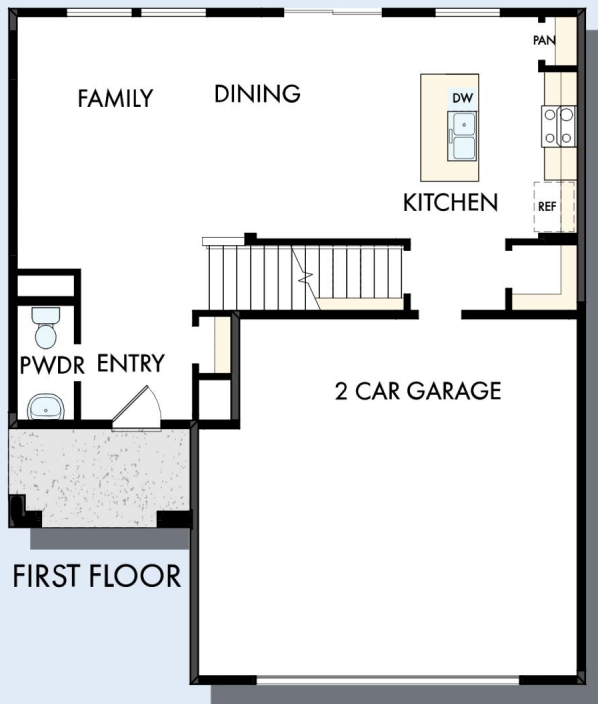
Welcome Home

My DWHome's experience has been truly 5-stars! From a floorplan concept, reserving a lot filled with dirt, the homebuilding project, to "Welcome Home", the entire process has been amazing. The team provided regular feedback and were always available to address questions and concerns. I was sold on the quality features. The entire team's availability and service has been exceptional before and after closing. Looking forward to enjoying our new home and neighbors for many years to come!

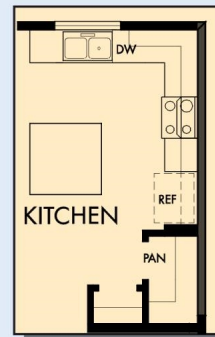
**David Weekley
Homes**

THE ELIAS

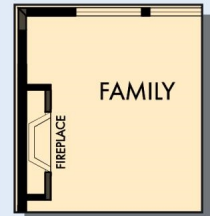
1,882 - 2,519 sq. ft. • 4 - 5 Bedrooms • 2 - 3 Full Baths • 1 Half Bath • 2 - 3 Car Garage



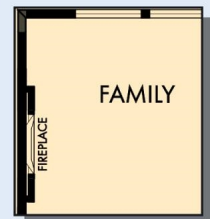
OPTIONAL 3 CAR GARAGE



OPTIONAL SUPER KITCHEN



OPTIONAL WALL FIREPLACE AT FAMILY



OPTIONAL ELECTRIC WALL FIREPLACE AT FAMILY

THE ELIAS

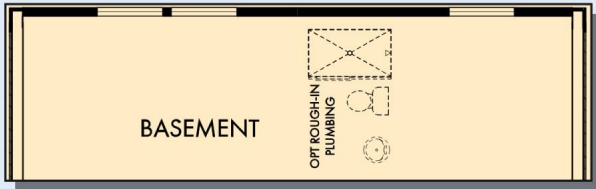


SECOND FLOOR

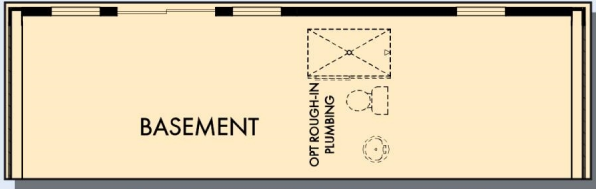
For additional options, please visit DavidWeekleyHomes.com

DavidWeekleyHomes.com

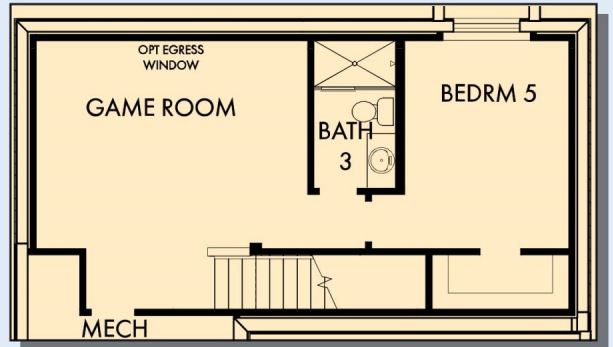
THE ELIAS



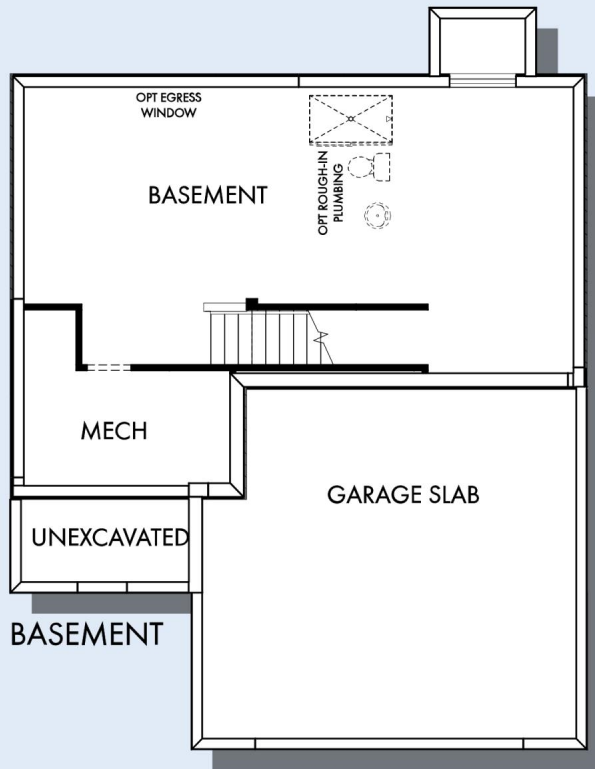
OPTIONAL DAYLIGHT BASEMENT



OPTIONAL WALKOUT BASEMENT



OPTIONAL GAME ROOM WITH BEDROOM 5 AND BATH 3 AT BASEMENT



For additional options, please visit DavidWeekleyHomes.com

See a David Weekley Homes Sales Consultant for details. Prices, plans, dimensions, features, specifications, materials, and availability of homes or communities are subject to change without notice or obligation. Illustrations are artist's depictions only and may differ from completed improvements. Copyright © 2024 David Weekley Homes - All Rights Reserved. Minneapolis/St. Paul, MN

DavidWeekleyHomes.com

