

THE PALOMAR



6236SAN-D

Exterior D

2,841 - 2,948 sq. ft.

4 Bedrooms

3 Full Baths

1 Half Bath

2 - 3 Car Garage



6236 SAN-G

Exterior G



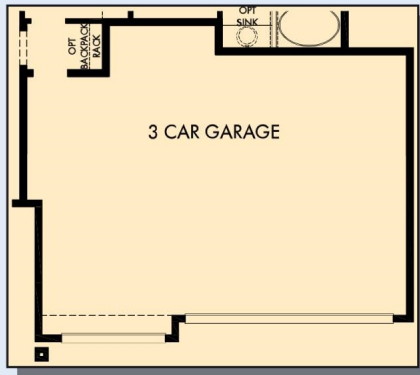
6236SAN - H

Exterior H

David Weekley
Homes

THE PALOMAR

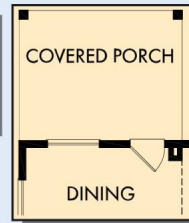
2,841 - 2,948 sq. ft. • 4 Bedrooms • 3 Full Baths • 1 Half Bath • 2 - 3 Car Garage



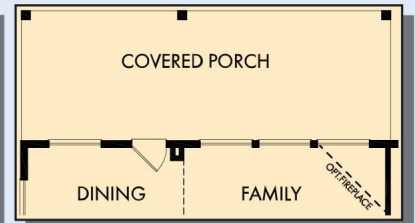
OPTIONAL 3 CAR GARAGE



OPTIONAL BAY WINDOW
AT OWNER'S RETREAT



OPTIONAL COVERED
PORCH AT DINING



OPTIONAL EXTENDED COVERED PORCH
AT DINING AND FAMILY



FIRST FLOOR



OPTIONAL BEDROOM 5
AND BATH 4 AT STUDY

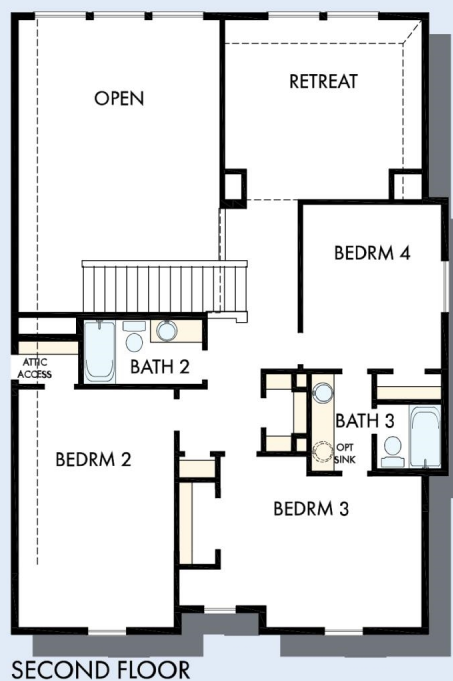


OPTIONAL SHOWER
AT OWNER'S BATH



OPTIONAL
SUPER SHOWER
AT OWNER'S BATH

THE PALOMAR



For additional options, please visit DavidWeekleyHomes.com



See a David Weekley Homes Sales Consultant for details. Prices, plans, dimensions, features, specifications, materials, and availability of homes or communities are subject to change without notice or obligation. Illustrations are artist's depictions only and may differ from completed improvements. Copyright © 2021 David Weekley Homes - All Rights Reserved. San Antonio, TX

DavidWeekleyHomes.com