

THE GREENVILLE



Exterior A

1,797 - 1,809 sq. ft.

3 Bedrooms

2 Full Baths

1 Half Bath

0 - 2 Car Garage



Exterior B

Rich C.



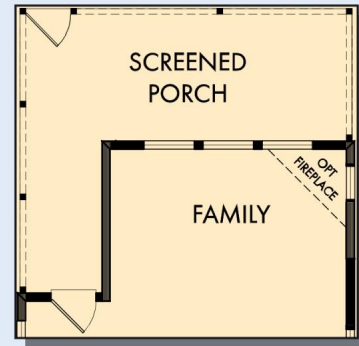
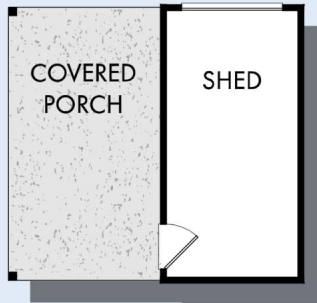
Wonderful Experience!

If there is anything that sets David Weekley apart from other builders it is their customer service. I felt like a member of the family from the first time I walked into the model, to when I received my keys and saw the wonderful housewarming presents that were left for me, up to the present when I see my salesman in the neighborhood. I felt like they really took the time to understand what I was looking for and then came through with my dream home. I would highly recommend David Weekley to anyone looking to buy and/or build a home.

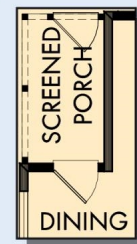
**David Weekley
Homes**

THE GREENVILLE

1,797 - 1,809 sq. ft. • 3 Bedrooms • 2 Full Baths • 1 Half Bath • 0 - 2 Car Garage



OPTIONAL EXTENDED SCREENED PORCH



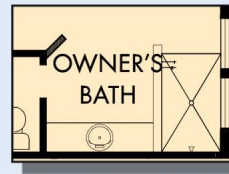
OPTIONAL SCREENED PORCH AT DINING



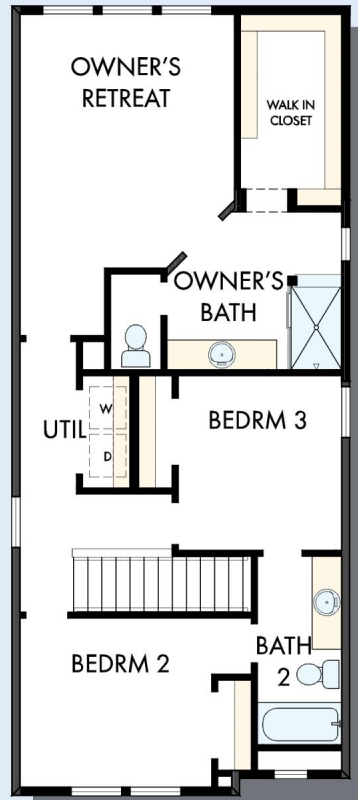
THE GREENVILLE



OPTIONAL DROP IN
TUB WITH SEPARATE
SHOWER AT
OWNER'S BATH



OPTIONAL SUPER
SHOWER AT
OWNER'S BATH



SECOND FLOOR

For additional options, please visit DavidWeekleyHomes.com



See a David Weekley Homes Sales Consultant for details.
Prices, plans, dimensions, features, specifications, materials,
and availability of homes or communities are subject to
change without notice or obligation. Illustrations are artist's
depictions only and may differ from completed improvements.
Copyright © 2021 David Weekley Homes - All Rights Reserved.
Charleston, SC

DavidWeekleyHomes.com