

THE HARPERVILLE



Exterior E



Exterior F

2,508 - 2,550 sq. ft.

4 - 5 Bedrooms

3 Full Baths

2 Car Garage

**David Weekley
Homes**

Sandra A.

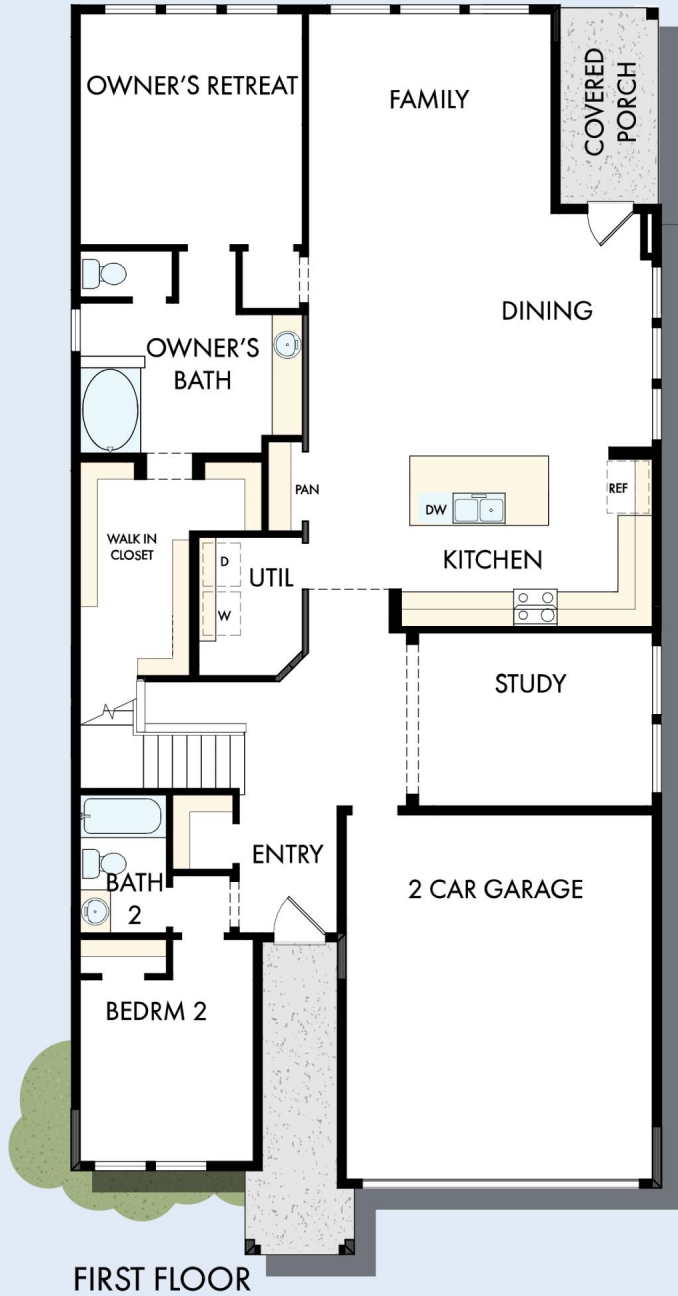


Best Builder Around

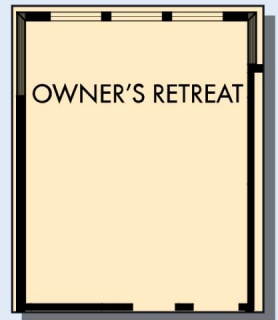
We have loved DW homes ever since our mother bought one. The quality of their work, attention to detail and willingness to respond to questions is top notch. The biggest thing we love about DW is their focus on customer service. They are not your typical builder who meets with you to get a check and forgets about you till walk thru. They are your partner through the entire process. Each step of the way they know they are building your dream house and really treat you like family. I would recommend them hands down. My husband sells real estate and has dealt with numerous builders around town. He always directs his clients to DW and signs their praises.

THE HARPERVILLE

2,508 - 2,550 sq. ft. • 4 - 5 Bedrooms • 3 Full Baths • 2 Car Garage



OPTIONAL SHOWER AT OWNER'S BATH



OPTIONAL EXTENDED OWNER'S RETREAT

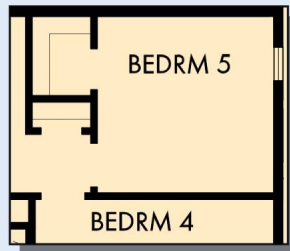


OPTIONAL DROP-IN TUB WITH SEPARATE SHOWER AT OWNER'S BATH

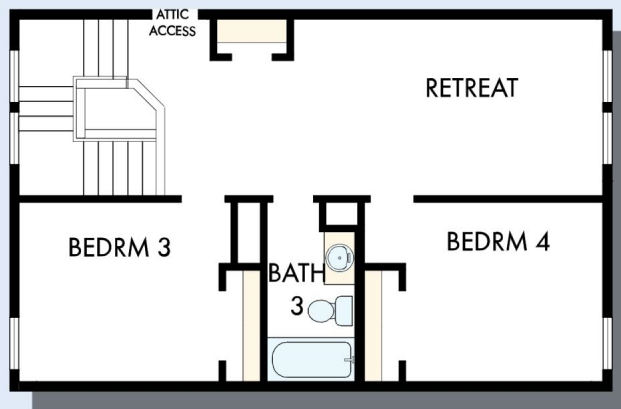


OPTIONAL SUPER SHOWER AT OWNER'S BATH

THE HARPERVILLE



OPTIONAL BEDROOM 5
AT RETREAT



SECOND FLOOR

For additional options, please visit DavidWeekleyHomes.com

See a David Weekley Homes Sales Consultant for details. Prices, plans, dimensions, features, specifications, materials, and availability of homes or communities are subject to change without notice or obligation. Illustrations are artist's depictions only and may differ from completed improvements. Copyright © 2024 David Weekley Homes - All Rights Reserved. Houston, TX

DavidWeekleyHomes.com

