

THE KAUFMAN



Exterior A

2,419 - 2,567 sq. ft.

3 Bedrooms

2 Full Baths

1 Half Bath

3 Car Garage



Exterior B

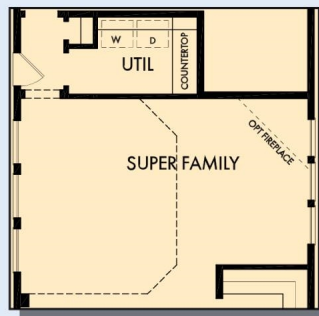


Exterior C

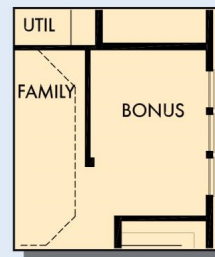
David Weekley
Homes

THE KAUFMAN

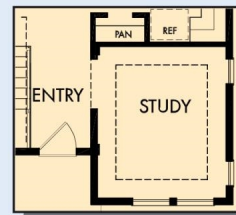
2,419 - 2,567 sq. ft. • 3 Bedrooms • 2 Full Baths • 1 Half Bath • 3 Car Garage



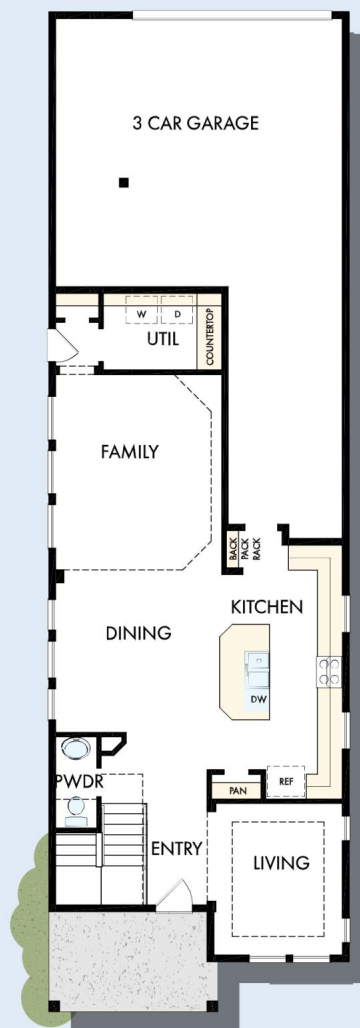
OPTIONAL SUPER FAMILY



OPTIONAL BONUS
AT GARAGE AND FAMILY



OPTIONAL STUDY
AT LIVING



FIRST FLOOR

6326 in 1822 DAL

For additional options, please visit DavidWeekleyHomes.com

10/29/2020

DavidWeekleyHomes.com

THE KAUFMAN



OPTIONAL SUPER
SHOWER AT
OWNER'S BATH



OPTIONAL DROP-IN TUB
WITH SEPARATE SHOWER
AT OWNER'S BATH



SECOND FLOOR

For additional options, please visit DavidWeekleyHomes.com



See a David Weekley Homes Sales Consultant for details. Prices, plans, dimensions, features, specifications, materials, and availability of homes or communities are subject to change without notice or obligation. Illustrations are artist's depictions only and may differ from completed improvements. Copyright © 2020 David Weekley Homes - All Rights Reserved. Dallas/Ft. Worth, TX

DavidWeekleyHomes.com