

THE KING'S PEAK



6541 SLC - A

Exterior A

2,199 - 3,596 sq. ft.

3 - 5 Bedrooms

2 - 4 Full Baths

1 Half Bath

2 Car Garage



6541 SLC - B

Exterior B

Rich C.



Wonderful Experience!

If there is anything that sets David Weekley apart from other builders it is their customer service. I felt like a member of the family from the first time I walked into the model, to when I received my keys and saw the wonderful housewarming presents that were left for me, up to the present when I see my salesman in the neighborhood. I felt like they really took the time to understand what I was looking for and then came through with my dream home. I would highly recommend David Weekley to anyone looking to buy and/or build a home.

**David Weekley
Homes**

THE KING'S PEAK

2,199 - 3,596 sq. ft. • 3 - 5 Bedrooms • 2 - 4 Full Baths • 1 Half Bath • 2 Car Garage



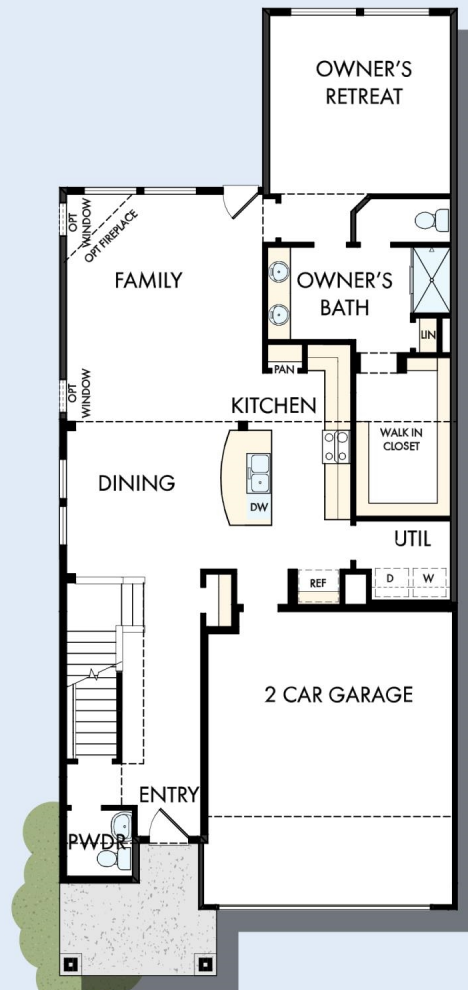
OPTIONAL
COVERED PORCH



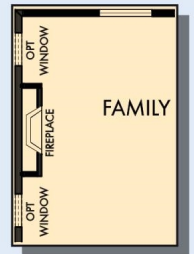
OPTIONAL SEPARATE
TUB AND SHOWER
AT OWNER'S BATH



OPTIONAL SUPER
SHOWER AT OWNER'S
BATH



FIRST FLOOR

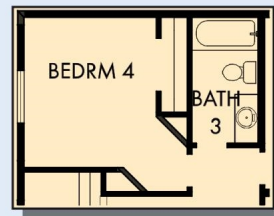


OPTIONAL WALL
FIREPLACE
AT FAMILY

THE KING'S PEAK



OPTIONAL BEDROOM 4
AT RETREAT



OPTIONAL BEDROOM 4
AND BATH 3 AT RETREAT

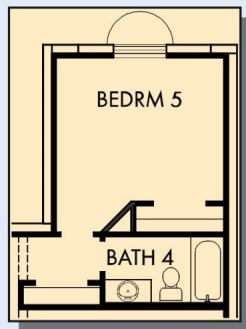


SECOND FLOOR

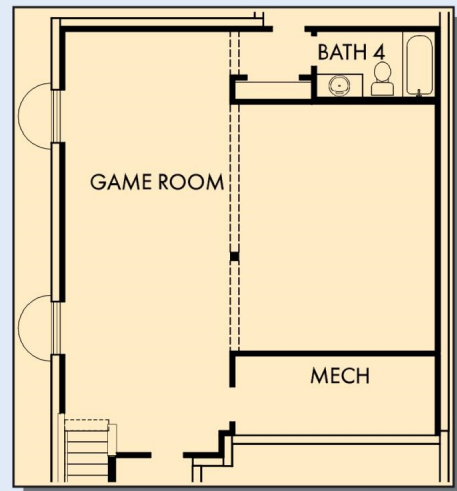
For additional options, please visit DavidWeekleyHomes.com

DavidWeekleyHomes.com

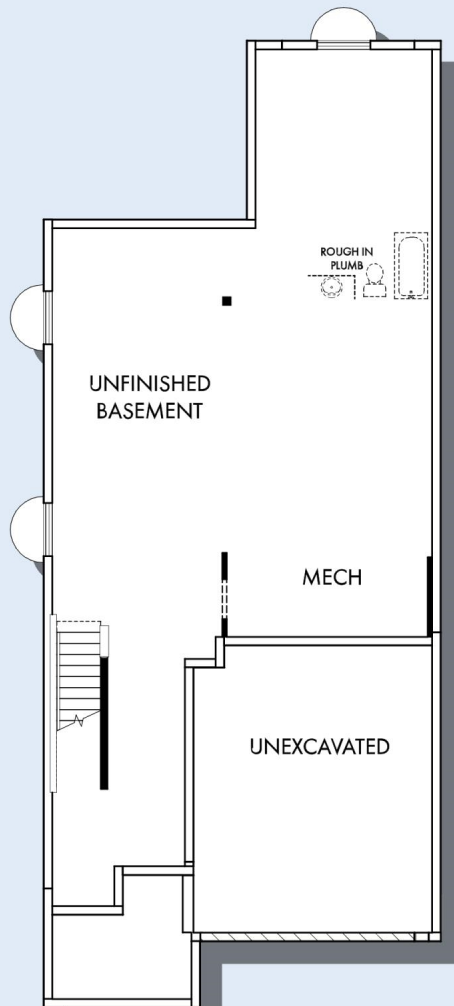
THE KING'S PEAK



OPTIONAL BEDROOM 5
WITH BATH 4



OPTIONAL GAMEROOM WITH BATH 4



BASEMENT

For additional options, please visit DavidWeekleyHomes.com



See a David Weekley Homes Sales Consultant for details. Prices, plans, dimensions, features, specifications, materials, and availability of homes or communities are subject to change without notice or obligation. Illustrations are artist's depictions only and may differ from completed improvements. Copyright © 2020 David Weekley Homes - All Rights Reserved. Salt Lake City, UT

DavidWeekleyHomes.com