

THE STEEL



Exterior A



Exterior B

3,206 - 3,573 sq. ft.

4 Bedrooms

3 Full Baths

0 - 1 Half Baths

2 - 4 Car Garage

Shane



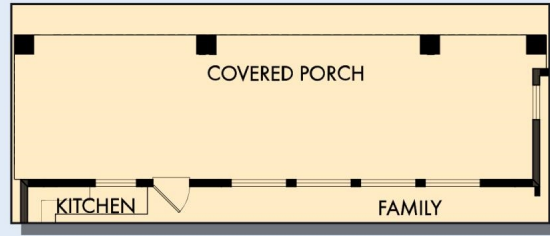
We're living our fairytale thanks to David Weekley

We can't say enough about the level of quality and care we received while building our home. Our builder was with us every step of the way to make sure our every need and desire was being met! The team truly went above and beyond at every turn to give us the home of our dreams! We will definitely recommend David Weekley to anyone looking to build a new home!

**David Weekley
Homes**

THE STEEL

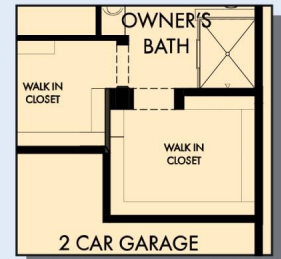
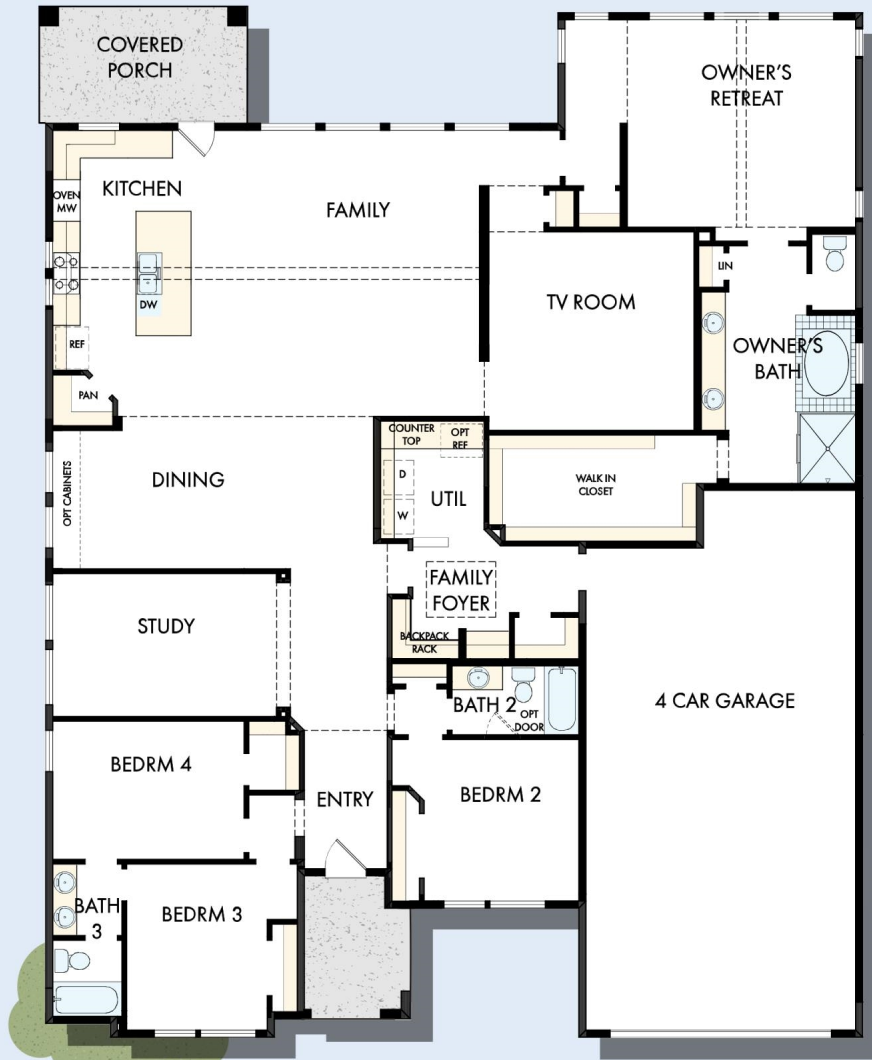
3,206 - 3,573 sq. ft. • 4 Bedrooms • 3 Full Baths • 0 - 1 Half Baths • 2 - 4 Car Garage



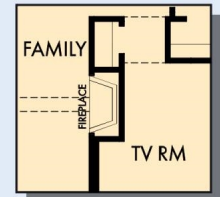
OPTIONAL EXTENDED COVERED PORCH AT KITCHEN



OPTIONAL SUPER SHOWER AT OWNER'S BATH



OPTIONAL SECOND CLOSET AT GARAGE



OPTIONAL WALL FIREPLACE AT FAMILY



OPTIONAL EXTENDED BEDROOM 3

B298 in 1963 DAL

For additional options, please visit DavidWeekleyHomes.com

12/2/2024

See a David Weekley Homes Sales Consultant for details. Prices, plans, dimensions, features, specifications, materials, and availability of homes or communities are subject to change without notice or obligation. Illustrations are artist's depictions only and may differ from completed improvements. Copyright © 2024 David Weekley Homes - All Rights Reserved. Dallas/Ft. Worth, TX

DavidWeekleyHomes.com

