

THE SAW MILL



Exterior G

2,846 - 2,852 sq. ft.

4 Bedrooms

3 Full Baths

2 Car Garage



Exterior H

Perez Family



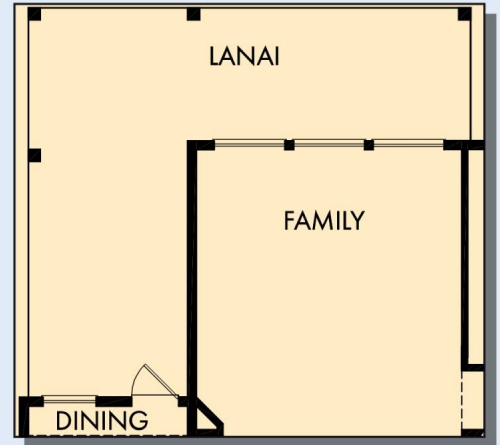
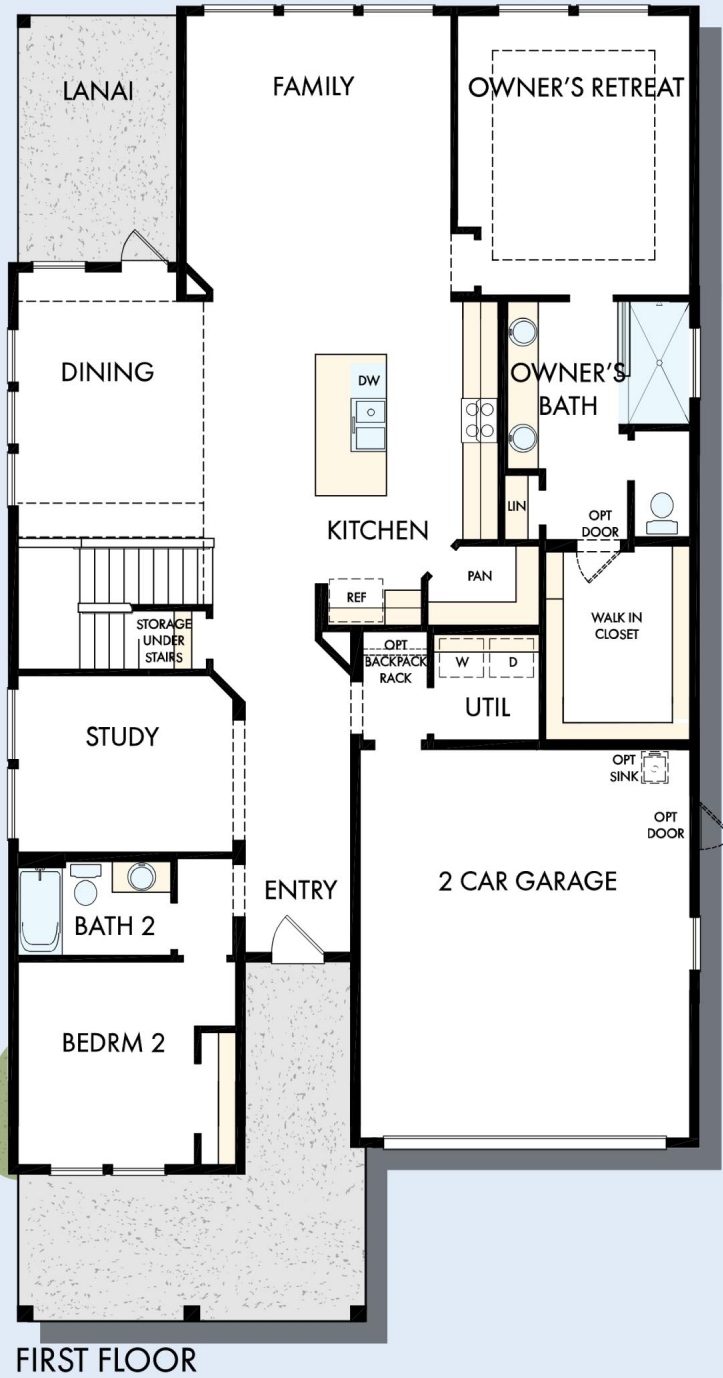
Best Homebuying Experience Ever

We have had several homes built in the past by several homebuilders. Our experience with David Weekley was the best we have ever had. The attention to detail and the customer service were exceptional. Both our sales person and Project Manager kept us well informed and treated us like family. Thanks David Weekley

David Weekley
Homes

THE SAW MILL

2,846 - 2,852 sq. ft. • 4 Bedrooms • 3 Full Baths • 2 Car Garage



OPTIONAL EXTENDED LANAI AT DINING AND FAMILY



OPTIONAL SLIP IN TUB WITH SEPARATE SHOWER AT OWNER'S BATH

THE SAW MILL



For additional options, please visit DavidWeekleyHomes.com

See a David Weekley Homes Sales Consultant for details. Prices, plans, dimensions, features, specifications, materials, and availability of homes or communities are subject to change without notice or obligation. Illustrations are artist's depictions only and may differ from completed improvements. Copyright © 2024 David Weekley Homes - All Rights Reserved. Jacksonville, FL



DavidWeekleyHomes.com

