

THE TULIP



Exterior A

1,772 sq. ft.

3 - 4 Bedrooms

2 - 3 Full Baths

1 Half Bath

2 Car Garage



Exterior B

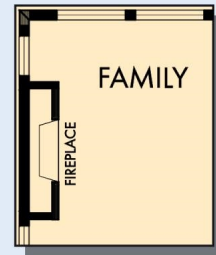
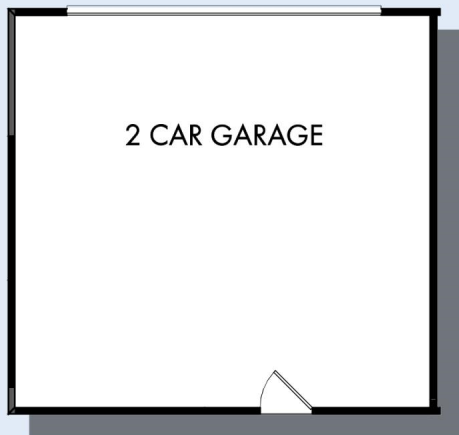


Exterior C

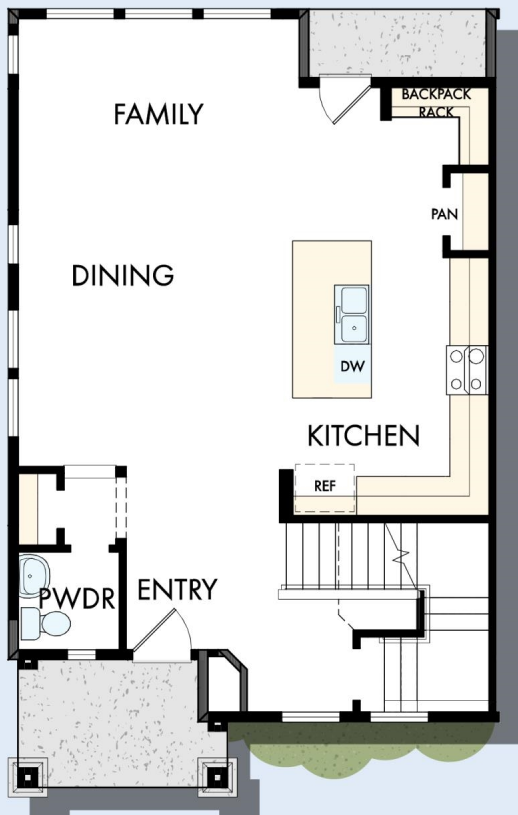
David Weekley
Homes

THE TULIP

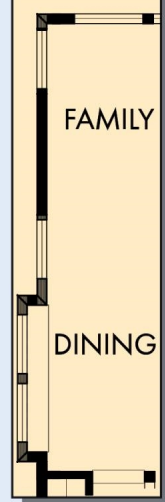
1,772 sq. ft. • 3 - 4 Bedrooms • 2 - 3 Full Baths • 1 Half Bath • 2 Car Garage



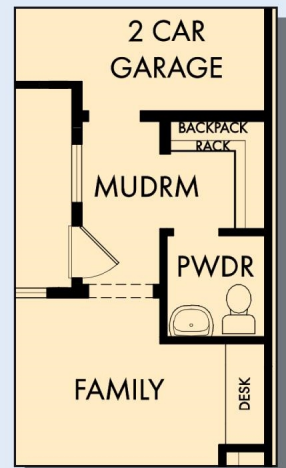
OPTIONAL OUTDOOR LIVING



FIRST FLOOR



FIRST FLOOR
WITH
OPTIONAL
CORNER
LOT



OPTIONAL MUDROOM

THE TULIP



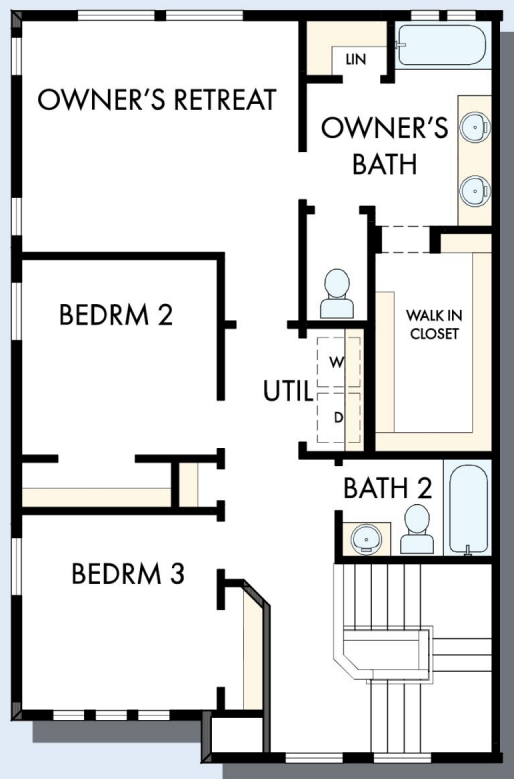
OPTIONAL RETREAT
AT BEDROOM 3



OPTIONAL SHOWER
AT OWNER'S BATH



OPTIONAL DROP IN
TUB WITH SEPARATE
SHOWER AT
OWNER'S BATH

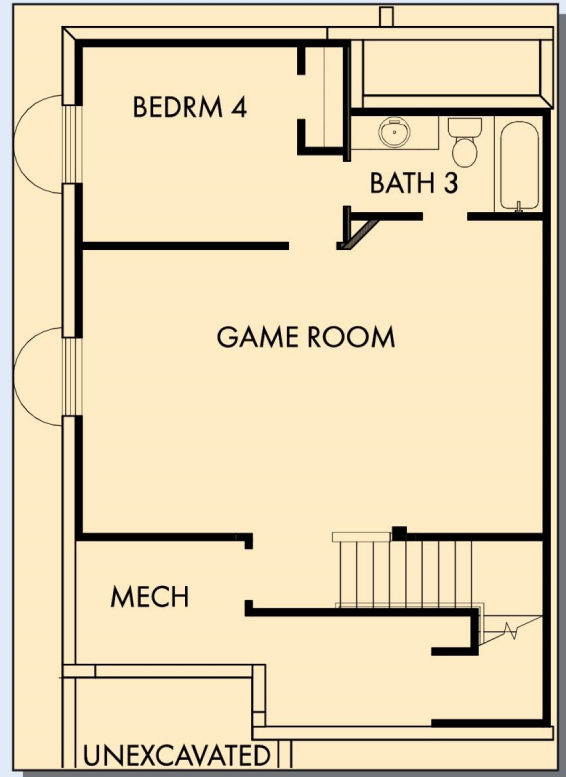
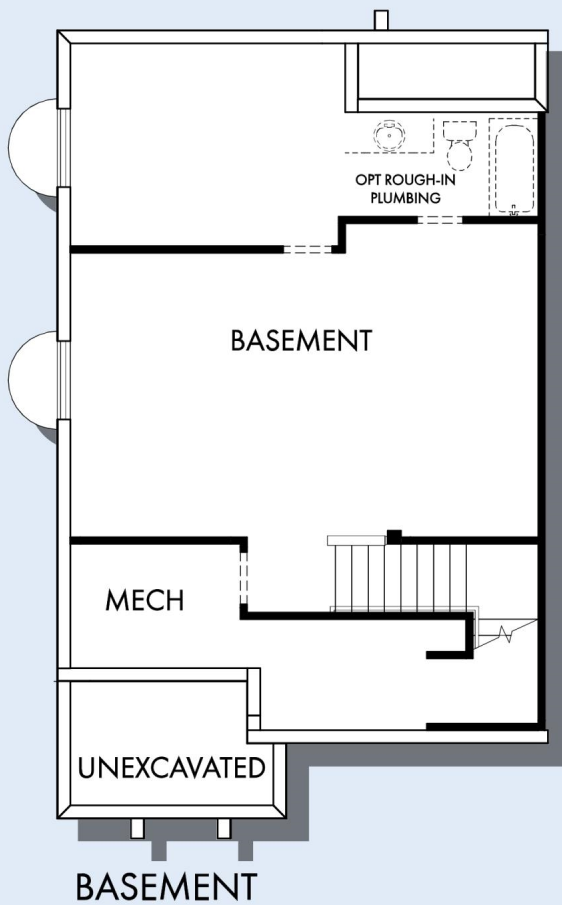
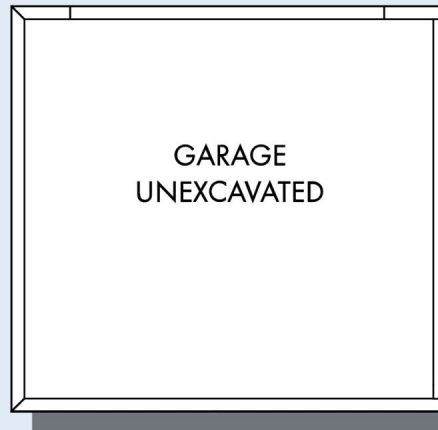


SECOND FLOOR

For additional options, please visit DavidWeekleyHomes.com

DavidWeekleyHomes.com

THE TULIP



OPTIONAL GAME ROOM WITH BEDROOM 4 AND BATH 3 AT BASEMENT

For additional options, please visit DavidWeekleyHomes.com



See a David Weekley Homes Sales Consultant for details. Prices, plans, dimensions, features, specifications, materials, and availability of homes or communities are subject to change without notice or obligation. Illustrations are artist's depictions only and may differ from completed improvements. Copyright © 2022 David Weekley Homes - All Rights Reserved. Salt Lake City, UT

DavidWeekleyHomes.com