

# THE RYMER



6235 SAN - E

Exterior E

2,793 - 3,398 sq. ft.

4 Bedrooms

3 Full Baths

2 - 3 Car Garage



6235 SAN - D

Exterior D



6235 SAN - F

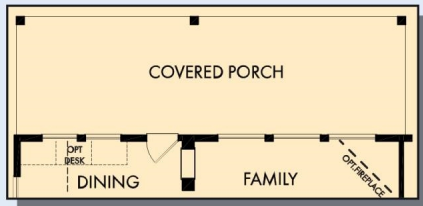
Exterior F

David Weekley  
Homes

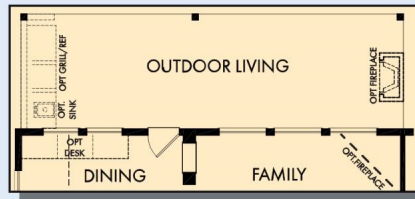


# THE RYMER

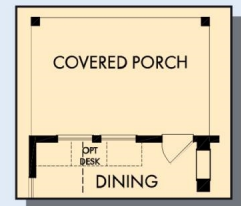
2,793 - 3,398 sq. ft. • 4 Bedrooms • 3 Full Baths • 2 - 3 Car Garage



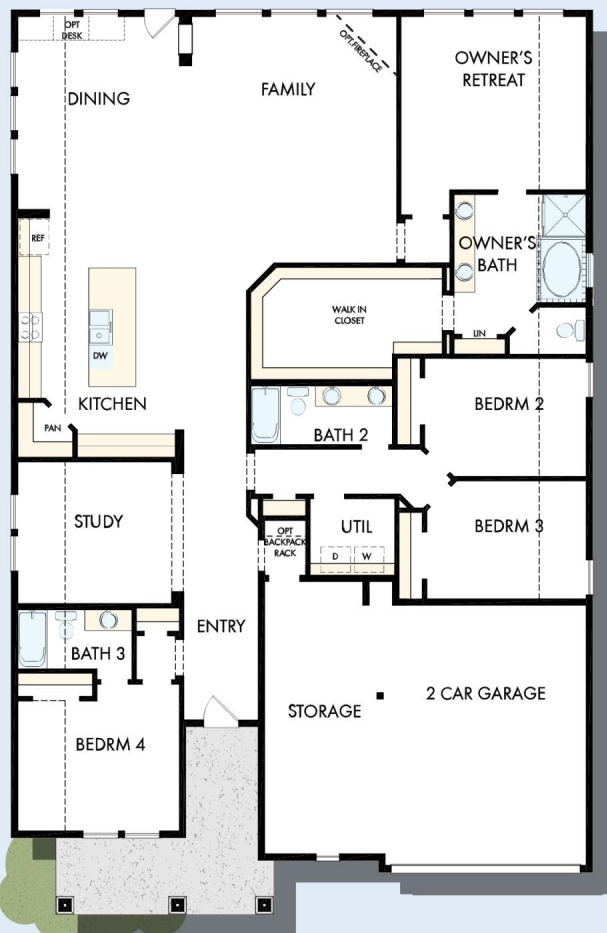
OPTIONAL EXTENDED COVERED PORCH  
AT DINING AND FAMILY



OPTIONAL OUTDOOR LIVING  
AT DINING AND FAMILY



OPTIONAL COVERED PORCH  
AT DINING



FIRST FLOOR



OPTIONAL EXTENDED  
OWNER'S RETREAT



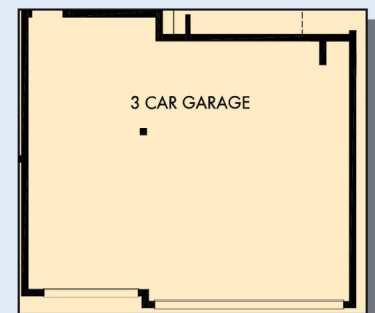
FIRST FLOOR WITH OPTIONAL  
SECOND FLOOR BONUS



OPTIONAL SUPER  
SHOWER AT  
OWNER'S BATH

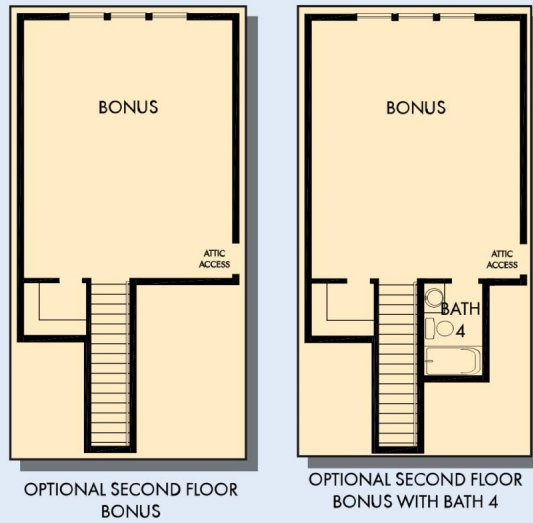


OPTIONAL SHOWER  
AT OWNER'S BATH



OPTIONAL 3 CAR GARAGE

# THE RYMER



For additional options, please visit [DavidWeekleyHomes.com](http://DavidWeekleyHomes.com)



See a David Weekley Homes Sales Consultant for details. Prices, plans, dimensions, features, specifications, materials, and availability of homes or communities are subject to change without notice or obligation. Illustrations are artist's depictions only and may differ from completed improvements. Copyright © 2022 David Weekley Homes - All Rights Reserved. San Antonio, TX

**DavidWeekleyHomes.com**