

# THE NIAGARA



Exterior A

2,035 - 3,681 sq. ft.

2 - 5 Bedrooms

2 - 3 Full Baths

1 Half Bath

3 - 4 Car Garage



Exterior B

**Gigi and Papa**



## **THE BESTest - Better than all the rest!**

What an awesome and personal family-oriented company! From touring model homes to selecting "THE ONE" just for us, the experience was delightful and amazing! The entire David Weekley team has been exceptionally wonderful and always available to address any issues we encountered. We have been amazed and impressed by the "Service after the Sale" approach by the David Weekley staff. We would recommend David Weekley homes to anyone. We feel like we are an important member of the Weekley family!

**David Weekley  
Homes**

# THE NIAGARA

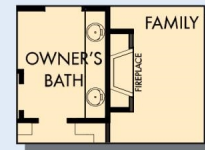
2,035 - 3,681 sq. ft. • 2 - 5 Bedrooms • 2 - 3 Full Baths • 1 Half Bath • 3 - 4 Car Garage



OPTIONAL SUPER  
SHOWER AT  
OWNER'S BATH



OPTIONAL SEPARATE  
TUB AND SHOWER  
AT OWNER'S BATH

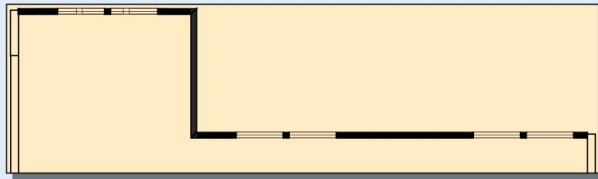


OPTIONAL FIREPLACE  
AT FAMILY

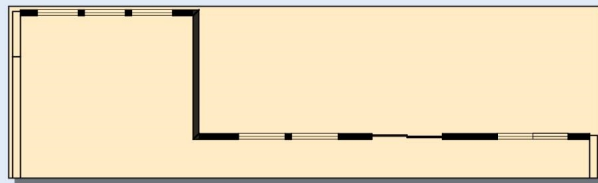


FIRST FLOOR

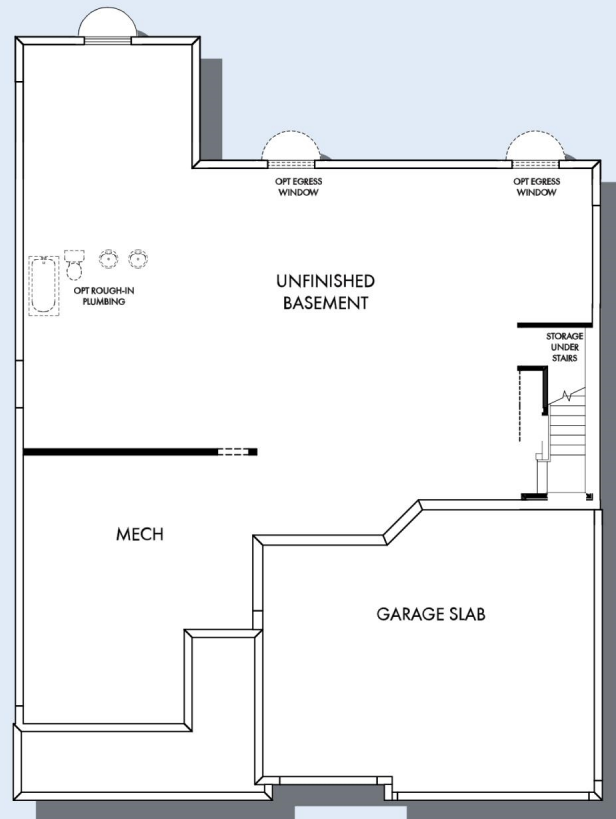
# THE NIAGARA



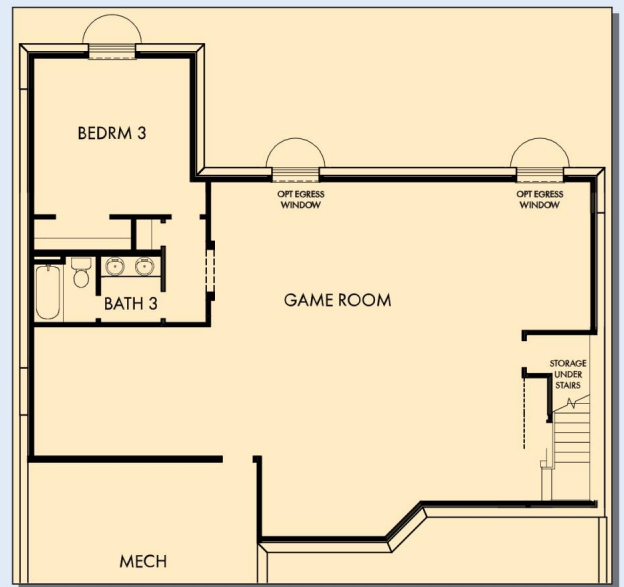
OPTIONAL DAYLIGHT BASEMENT



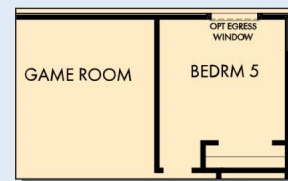
OPTIONAL WALKOUT BASEMENT



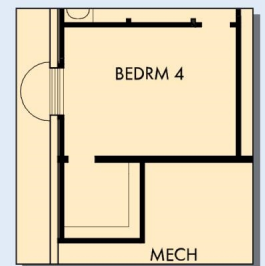
BASEMENT



OPTIONAL FINISHED BASEMENT WITH GAMEROOM AND BEDROOM 3 WITH BATH 3



OPTIONAL BEDROOM 5 AT FINISHED BASEMENT



OPTIONAL BEDROOM 4 AT FINISHED BASEMENT

For additional options, please visit [DavidWeekleyHomes.com](http://DavidWeekleyHomes.com)

**DavidWeekleyHomes.com**



See a David Weekley Homes Sales Consultant for details. Prices, plans, dimensions, features, specifications, materials, and availability of homes or communities are subject to change without notice or obligation. Illustrations are artist's depictions only and may differ from completed improvements. Copyright © 2021 David Weekley Homes - All Rights Reserved. Minneapolis/St. Paul, MN