

THE KINGSBRIDGE



7689 TAM - A

Exterior A

2,329 - 2,498 sq. ft.

4 Bedrooms

2 Full Baths

1 Half Bath

3 Car Garage



7689 TAM - B

Exterior B

Gigi and Papa



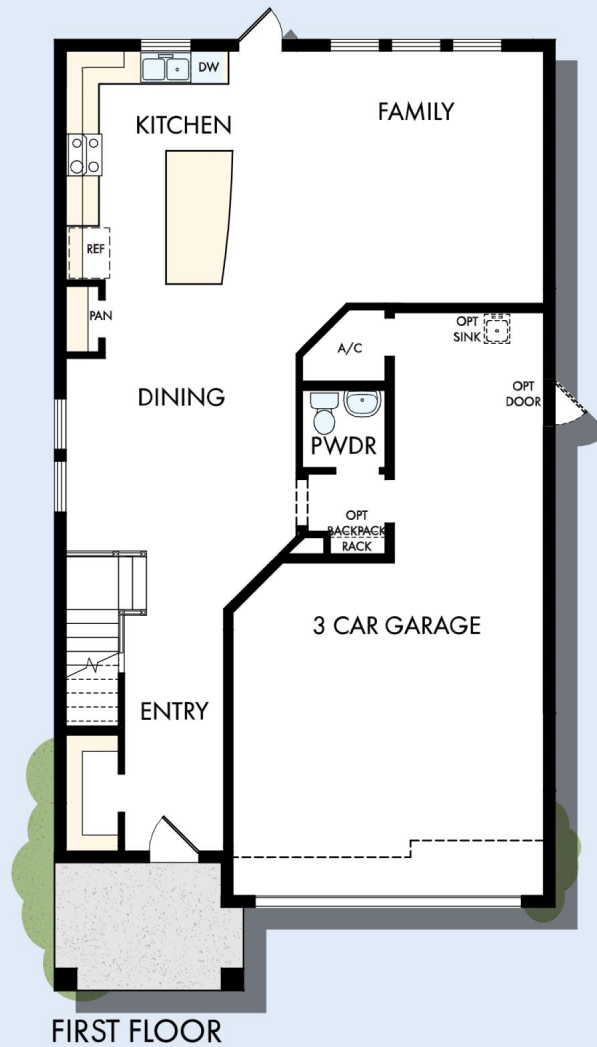
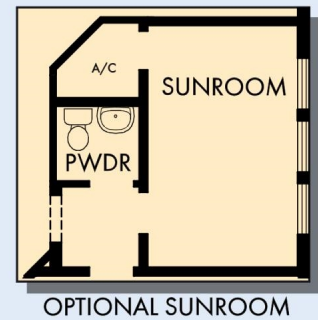
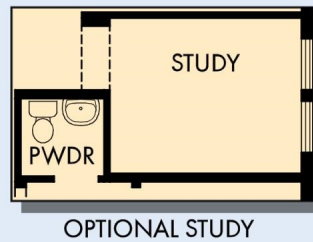
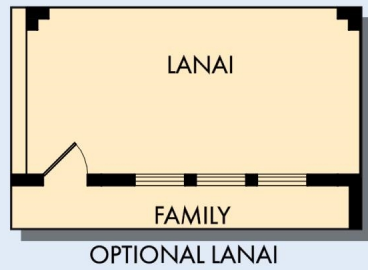
THE BESTest - Better than all the rest!

What an awesome and personal family-oriented company! From touring model homes to selecting "THE ONE" just for us, the experience was delightful and amazing! The entire David Weekley team has been exceptionally wonderful and always available to address any issues we encountered. We have been amazed and impressed by the "Service after the Sale" approach by the David Weekley staff. We would recommend David Weekley homes to anyone. We feel like we are an important member of the Weekley family!

**David Weekley
Homes**

THE KINGSBRIDGE

2,329 - 2,498 sq. ft. • 4 Bedrooms • 2 Full Baths • 1 Half Bath • 3 Car Garage



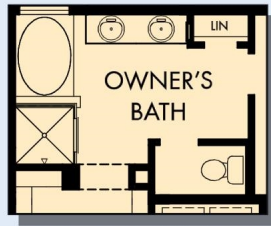
7689 in 3878 TAM

For additional options, please visit DavidWeekleyHomes.com

12/2/2019

DavidWeekleyHomes.com

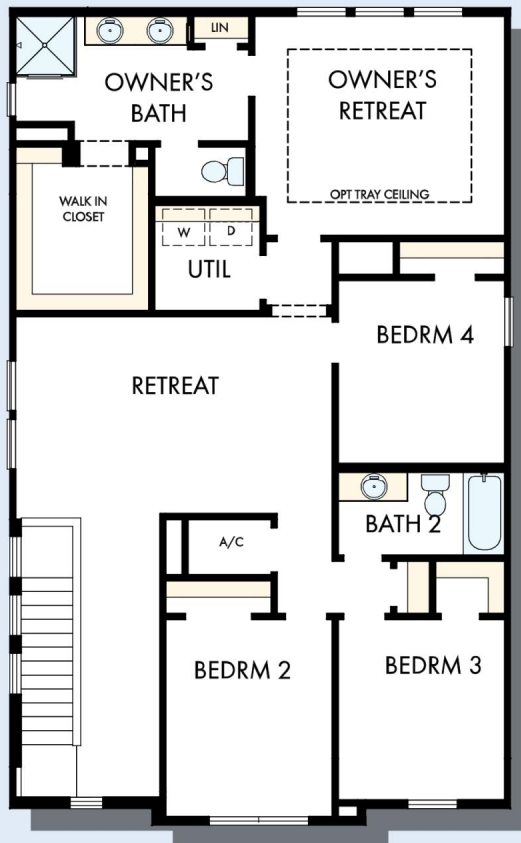
THE KINGSBRIDGE



OPTIONAL SEPARATE
TUB AND SHOWER
AT OWNER'S BATH



OPTIONAL SUPER
SHOWER AT OWNER'S
BATH



SECOND FLOOR

For additional options, please visit DavidWeekleyHomes.com



See a David Weekley Homes Sales Consultant for details.
Prices, plans, dimensions, features, specifications, materials,
and availability of homes or communities are subject to
change without notice or obligation. Illustrations are artist's
depictions only and may differ from completed improvements.
Copyright © 2019 David Weekley Homes - All Rights Reserved.
Tampa, FL

DavidWeekleyHomes.com