

THE FOXMAN



Exterior D

1,819 - 2,119 sq. ft.

3 Bedrooms

2 Full Baths

1 Half Bath

2 Car Garage



Exterior E



Exterior F

David Weekley
Homes

THE FOXMAN

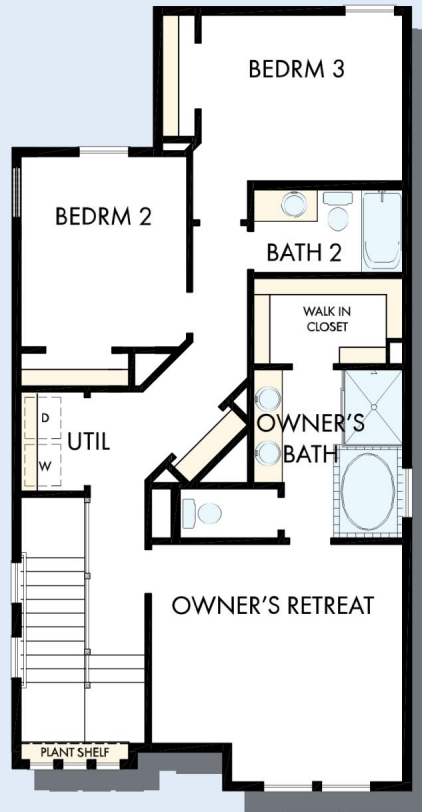
1,819 - 2,119 sq. ft. • 3 Bedrooms • 2 Full Baths • 1 Half Bath • 2 Car Garage



THE FOXMAN



OPTIONAL SUPER SHOWER
AT OWNER'S BATH



SECOND FLOOR

For additional options, please visit DavidWeekleyHomes.com

See a David Weekley Homes Sales Consultant for details. Prices, plans, dimensions, features, specifications, materials, and availability of homes or communities are subject to change without notice or obligation. Illustrations are artist's depictions only and may differ from completed improvements. Copyright © 2024 David Weekley Homes - All Rights Reserved. Houston, TX

DavidWeekleyHomes.com



EQUAL HOUSING OPPORTUNITY