

# THE TOWNSMAN



Exterior A



Exterior B

2,153 - 3,605 sq. ft.

3 - 5 Bedrooms

2 - 3 Full Baths

2 - 3 Car Garage

## Greg and Jane



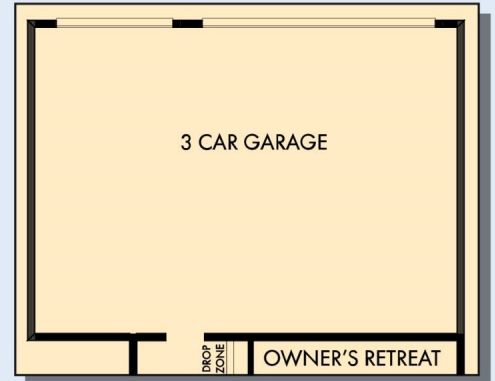
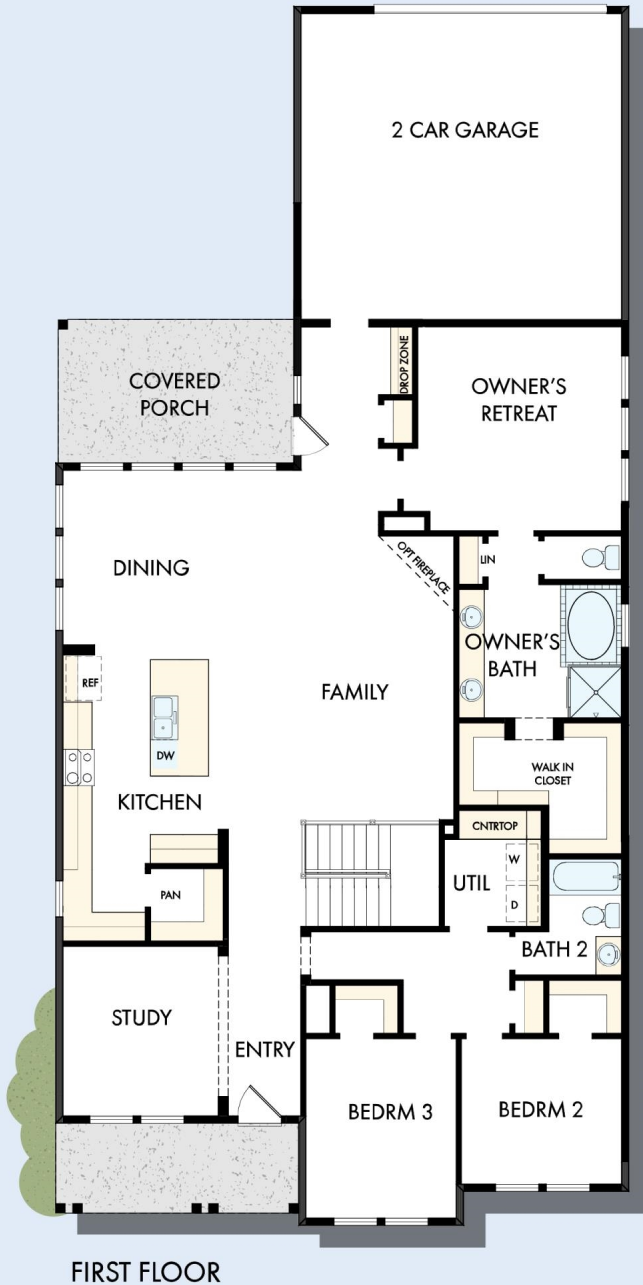
### Exceptional service and experience!

We have been fortunate enough to build several new homes and this was by far the best experience that we've encountered. We actually debated whether or not we wanted to go through the home building process again or simply purchase a pre-owned home or a finished new home. So pleased we built! Our Weekley team (sales associate, design consultant and builder) was very professional, courteous, attentive, responsive and pro-active from beginning to end. They've all become our adopted kids! Great overall experience!

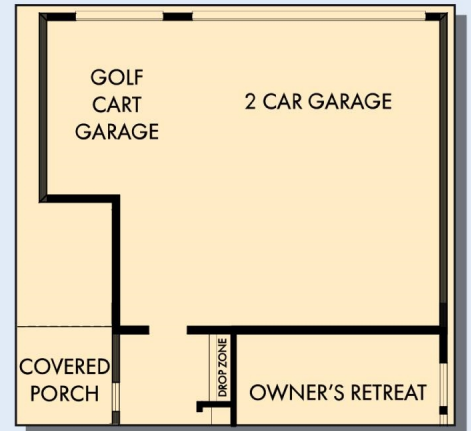
**David Weekley  
Homes**

# THE TOWNSMAN

2,153 - 3,605 sq. ft. • 3 - 5 Bedrooms • 2 - 3 Full Baths • 2 - 3 Car Garage



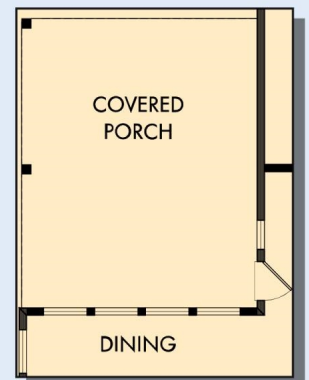
OPTIONAL 3 CAR GARAGE



OPTIONAL GOLF CART GARAGE



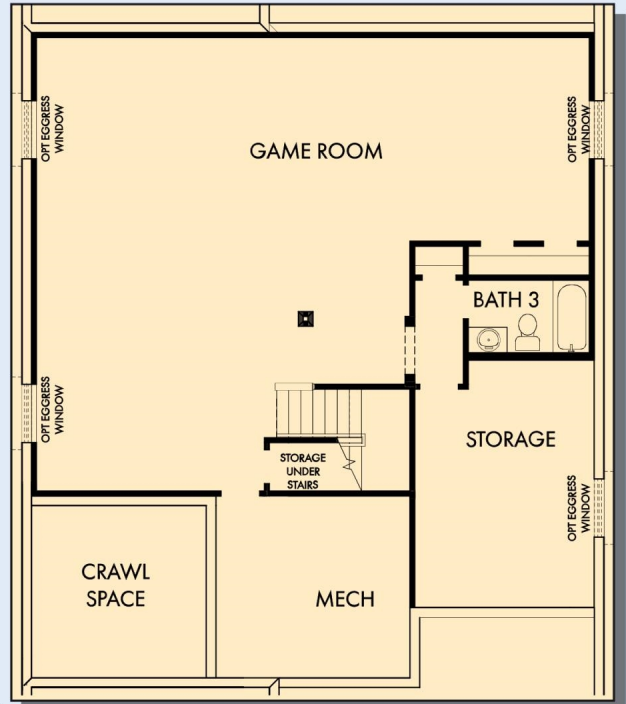
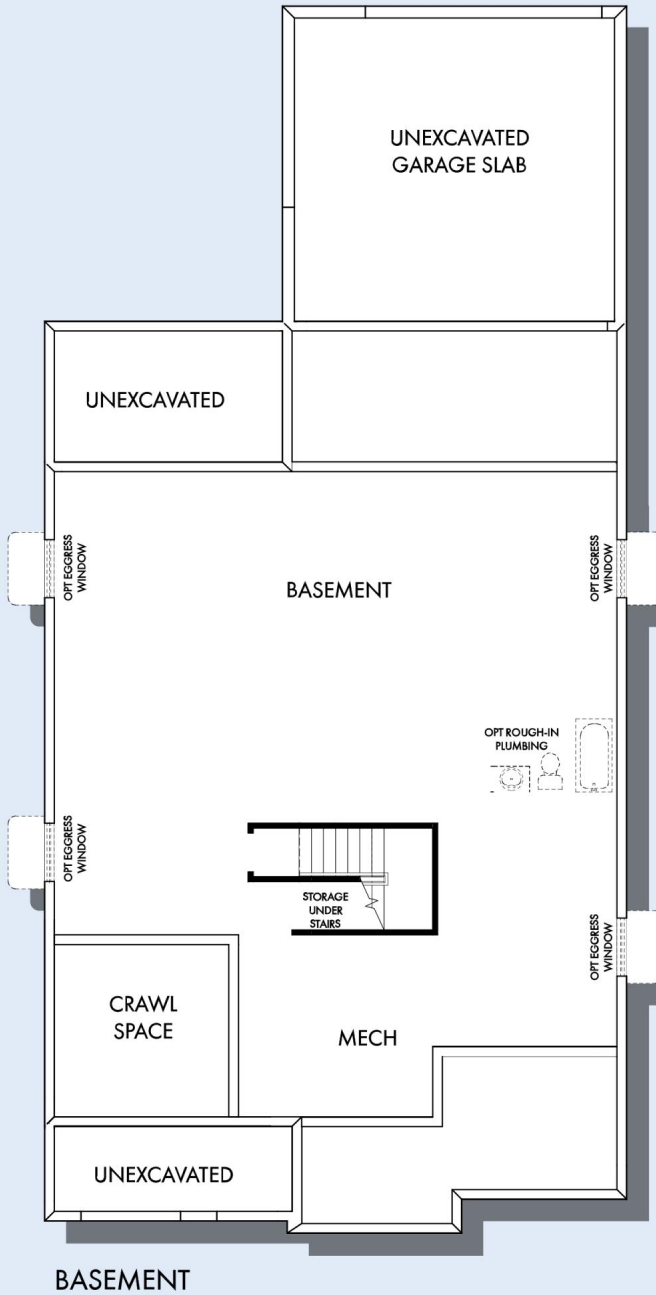
OPTIONAL SUPER SHOWER AT OWNER'S BATH



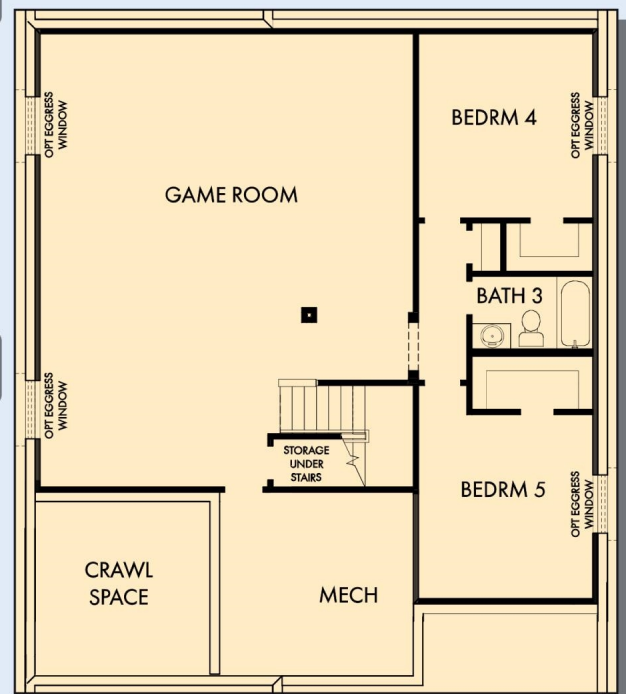
OPTIONAL EXTENDED COVERED PORCH



# THE TOWNSMAN



OPTIONAL GAME ROOM WITH BATH 3 AT BASEMENT



OPTIONAL GAME ROOM WITH BEDROOM 4,5 AND BATH 3 AT BASEMENT

For additional options, please visit [DavidWeekleyHomes.com](http://DavidWeekleyHomes.com)

See a David Weekley Homes Sales Consultant for details. Prices, plans, dimensions, features, specifications, materials, and availability of homes or communities are subject to change without notice or obligation. Illustrations are artist's depictions only and may differ from completed improvements. Copyright © 2024 David Weekley Homes - All Rights Reserved. Indianapolis, IN

**DavidWeekleyHomes.com**

