

THE KEPLEY



4628 DAL - T

Exterior T

2,202 - 2,631 sq. ft.

3 Bedrooms

2 - 3 Full Baths

0 - 1 Half Baths

2 Car Garage



4628DAL_U

Exterior U

Rich C.



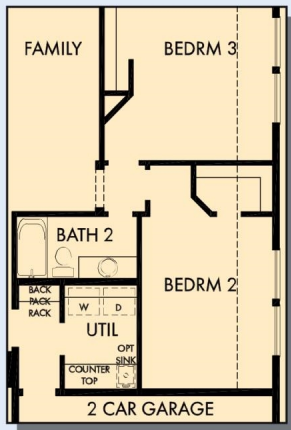
Wonderful Experience!

If there is anything that sets David Weekley apart from other builders it is their customer service. I felt like a member of the family from the first time I walked into the model, to when I received my keys and saw the wonderful housewarming presents that were left for me, up to the present when I see my salesman in the neighborhood. I felt like they really took the time to understand what I was looking for and then came through with my dream home. I would highly recommend David Weekley to anyone looking to buy and/or build a home.

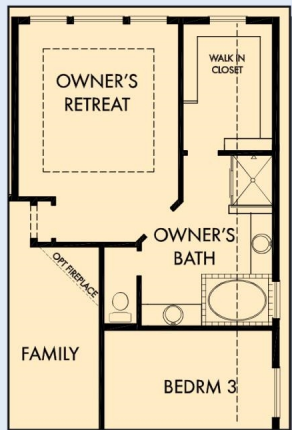
**David Weekley
Homes**

THE KEPLEY

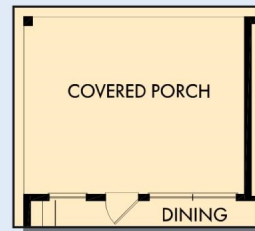
2,202 - 2,631 sq. ft. • 3 Bedrooms • 2 - 3 Full Baths • 0 - 1 Half Baths • 2 Car Garage



OPTIONAL EXTENDED
BEDROOM 2 AND BEDROOM 3



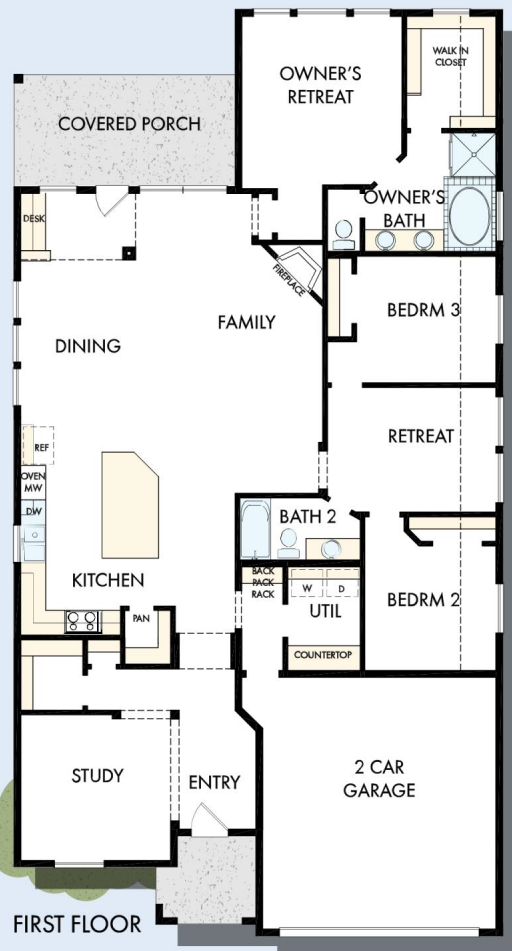
OPTIONAL SUPER OWNER'S RETREAT



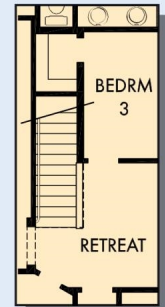
OPTIONAL EXTENDED COVERED
PORCH AT DINING



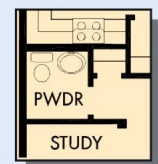
OPTIONAL SUPER SHOWER
AT OWNER'S BATH



FIRST FLOOR

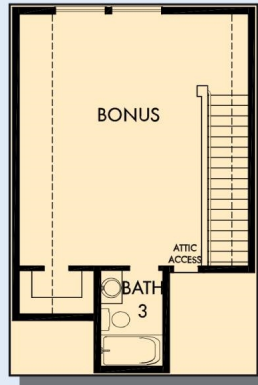


FIRST FLOOR WITH
OPTIONAL SECOND
FLOOR BONUS



OPTIONAL
POWDER BATH AT
STUDY CLOSET

THE KEPLEY



OPTIONAL SECOND FLOOR
BONUS WITH BATH 3

For additional options, please visit DavidWeekleyHomes.com



See a David Weekley Homes Sales Consultant for details.
Prices, plans, dimensions, features, specifications, materials,
and availability of homes or communities are subject to
change without notice or obligation. Illustrations are artist's
depictions only and may differ from completed improvements.
Copyright © 2020 David Weekley Homes - All Rights Reserved.
Dallas/Ft. Worth, TX

DavidWeekleyHomes.com