

# THE NEIMAN



Exterior A

2,014 - 2,103 sq. ft.

3 - 5 Bedrooms

2 - 4 Full Baths

2 Car Garage



Exterior B

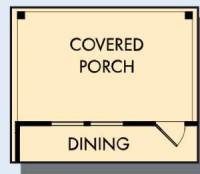


Exterior C

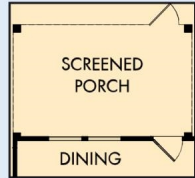
**Imagination**  
by David Weekley Homes

# THE NEIMAN

2,014 - 2,103 sq. ft. • 3 - 5 Bedrooms • 2 - 4 Full Baths • 2 Car Garage



OPTIONAL COVERED PORCH AT DINING



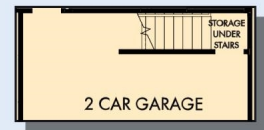
OPTIONAL SCREENED PORCH AT DINING



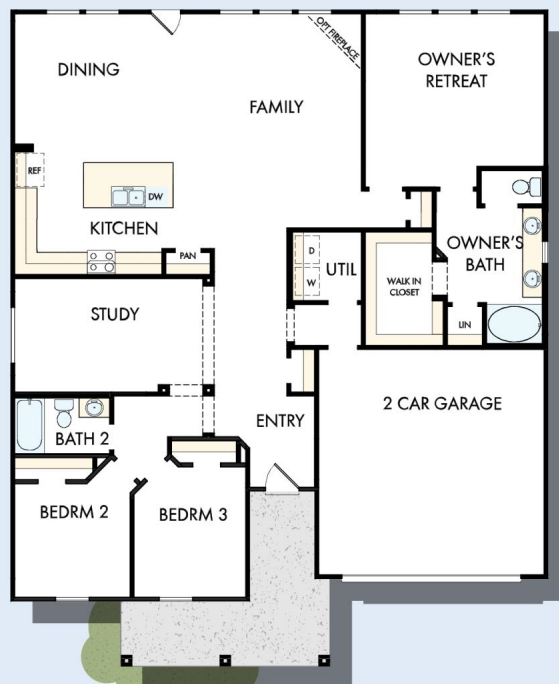
OPTIONAL SLIDE-IN TUB WITH SEPARATE SHOWER AT OWNER'S BATH



OPTIONAL EXTENDED SHOWER AT OWNER'S BATH



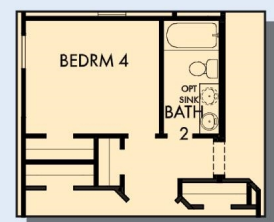
FIRST FLOOR WITH OPTIONAL SECOND FLOOR ATTIC STORAGE



FIRST FLOOR



FIRST FLOOR WITH OPTIONAL SECOND FLOOR BONUS



OPTIONAL BEDROOM 4 AT STUDY

7850 in 3607 CHA

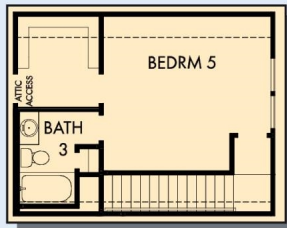
For additional options, please visit [DavidWeekleyHomes.com](http://DavidWeekleyHomes.com)

5/11/2021

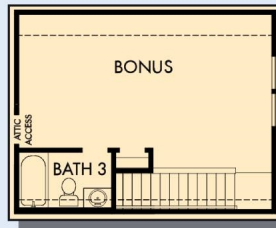
**Imagination**  
by David Weekley Homes



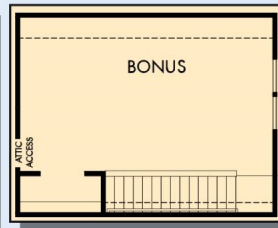
# THE NEIMAN



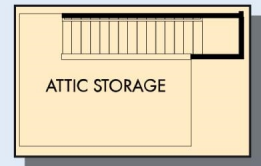
OPTIONAL SECOND FLOOR BONUS  
WITH BEDROOM 5 AND BATH 3



OPTIONAL SECOND FLOOR BONUS  
WITH BATH 3



OPTIONAL SECOND FLOOR BONUS



OPTIONAL SECOND  
FLOOR ATTIC STORAGE

For additional options, please visit [DavidWeekleyHomes.com](http://DavidWeekleyHomes.com)



See a David Weekley Homes Sales Consultant for details.  
Prices, plans, dimensions, features, specifications, materials,  
and availability of homes or communities are subject to  
change without notice or obligation. Illustrations are artist's  
depictions only and may differ from completed improvements.  
Copyright © 2021 David Weekley Homes - All Rights Reserved.  
Charlotte, NC

**Imagination**  
by David Weekley Homes