

THE KELLYWOOD



6253 CTX - A

Exterior A

1,891 - 1,944 sq. ft.

3 - 4 Bedrooms

2 Full Baths

2 - 3 Car Garage



6253 CTX - D

Exterior D



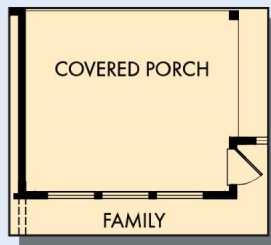
6253 CTX - E

Exterior E

David Weekley
Homes

THE KELLYWOOD

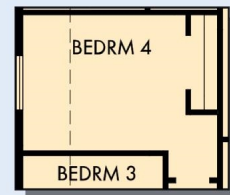
1,891 - 1,944 sq. ft. • 3 - 4 Bedrooms • 2 Full Baths • 2 - 3 Car Garage



OPTIONAL EXTENDED
COVERED PORCH AT FAMILY



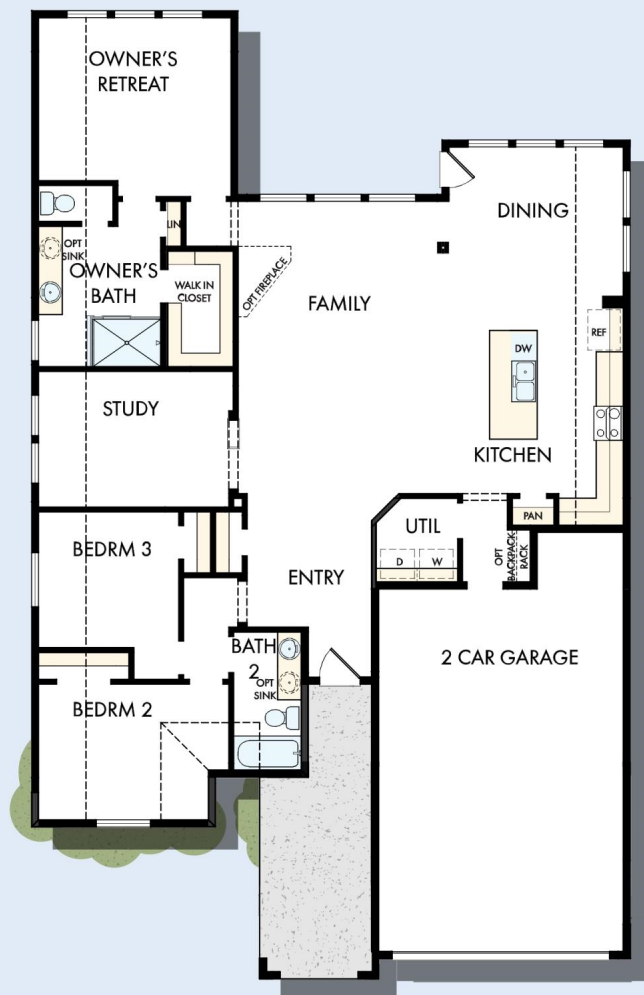
OPTIONAL COVERED PORCH
AT FAMILY



OPTIONAL BEDROOM 4
AT STUDY



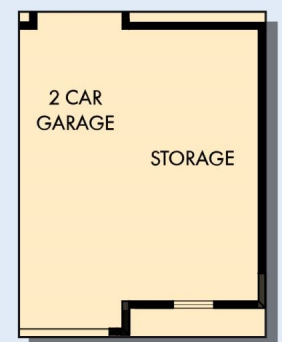
OPTIONAL EXTENDED
OWNER'S RETREAT



OPTIONAL SUPER
SHOWER AT
OWNER'S BATH



OPTIONAL SEPARATE
TUB AND SHOWER
AT OWNER'S BATH



OPTIONAL STORAGE AT
2 CAR GARAGE

6253 in 2168 AUS

For additional options, please visit DavidWeekleyHomes.com

8/21/2019



See a David Weekley Homes Sales Consultant for details. Prices, plans, dimensions, features, specifications, materials, and availability of homes or communities are subject to change without notice or obligation. Illustrations are artist's depictions only and may differ from completed improvements. Copyright © 2019 David Weekley Homes - All Rights Reserved. Austin, TX

DavidWeekleyHomes.com