

# THE SILVERMAN



Exterior A



Exterior B

2,687 - 2,831 sq. ft.

4 - 5 Bedrooms

3 Full Baths

1 Half Bath

2 Car Garage

**Crystal W.**



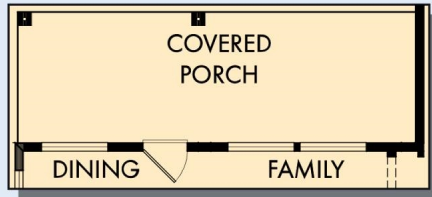
**Welcome Home**

My DWHome experience has been truly 5-stars! From a floorplan concept, reserving a lot filled with dirt, the homebuilding project, to "Welcome Home", the entire process has been amazing. The team provided regular feedback and were always available to address questions and concerns. I was sold on the quality features. The entire team's availability and service has been exceptional before and after closing. Looking forward to enjoying our new home and neighbors for many years to come!

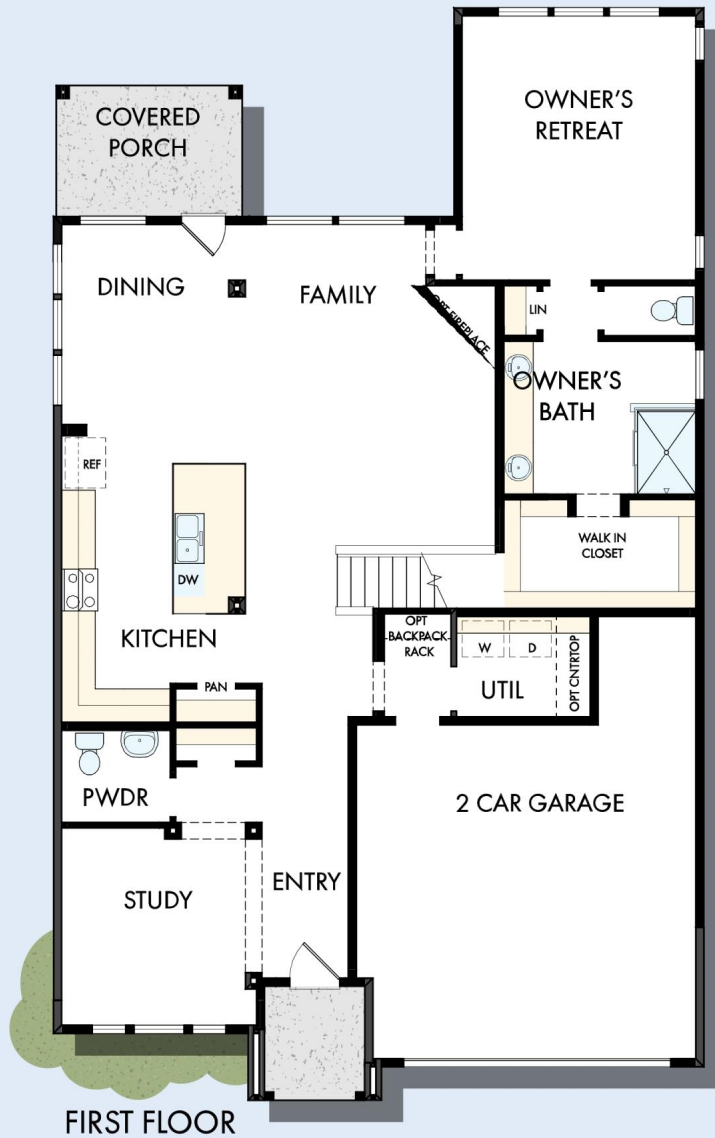
**David Weekley  
Homes**

# THE SILVERMAN

2,687 - 2,831 sq. ft. • 4 - 5 Bedrooms • 3 Full Baths • 1 Half Bath • 2 Car Garage



OPTIONAL EXTENDED COVERED PORCH  
AT DINING AND FAMILY



OPTIONAL SUPER SHOWER  
AT OWNER'S BATH



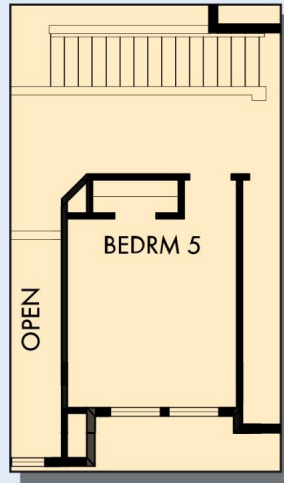
OPTIONAL DROP-IN TUB  
WITH SEPARATE SHOWER  
AT OWNER'S BATH



OPTIONAL SLIDE-IN TUB  
WITH SEPARATE SHOWER  
AT OWNER'S BATH



# THE SILVERMAN



OPTIONAL BEDROOM 5  
AT RETREAT



SECOND FLOOR

For additional options, please visit [DavidWeekleyHomes.com](http://DavidWeekleyHomes.com)

See a David Weekley Homes Sales Consultant for details. Prices, plans, dimensions, features, specifications, materials, and availability of homes or communities are subject to change without notice or obligation. Illustrations are artist's depictions only and may differ from completed improvements. Copyright © 2024 David Weekley Homes - All Rights Reserved. Dallas/Ft. Worth, TX

**DavidWeekleyHomes.com**



EQUAL HOUSING OPPORTUNITY