

# THE WORTHDALE



Exterior C



Exterior D

3,488 - 5,057 sq. ft.

4 - 6 Bedrooms

3 - 5 Full Baths

1 Half Bath

3 Car Garage

**Shane**



**We're living our fairytale thanks to David Weekley**

We can't say enough about the level of quality and care we received while building our home. Our builder was with us every step of the way to make sure our every need and desire was being met! The team truly went above and beyond at every turn to give us the home of our dreams! We will definitely recommend David Weekley to anyone looking to build a new home!

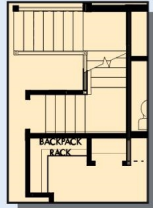
**David Weekley  
Homes**

# THE WORTHDALE

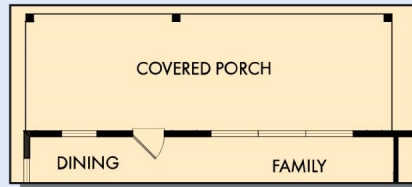
3,488 - 5,057 sq. ft. • 4 - 6 Bedrooms • 3 - 5 Full Baths • 1 Half Bath • 3 Car Garage



COVERED DECK WITH OPTIONAL BASEMENT



FIRST FLOOR WITH OPTIONAL BASEMENT



OPTIONAL EXTENDED COVERED PORCH



OPTIONAL FREE STANDING TUB WITH SEPARATE SHOWER AT OWNER'S BATH



FIRST FLOOR



OPTIONAL SUPER SHOWER AT OWNER'S BATH



OPTIONAL BEDROOM 5 WITH BATH 4 AT STUDY

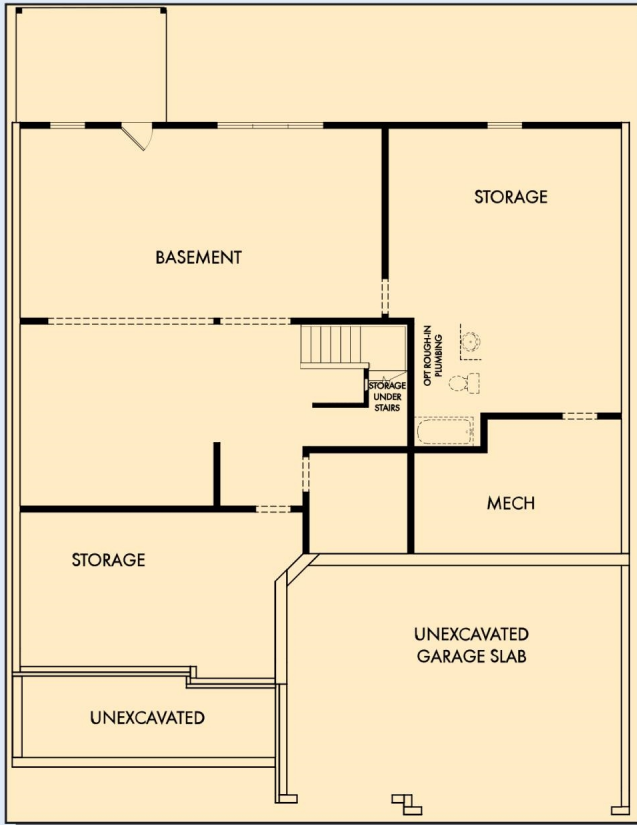
# THE WORTHDALE



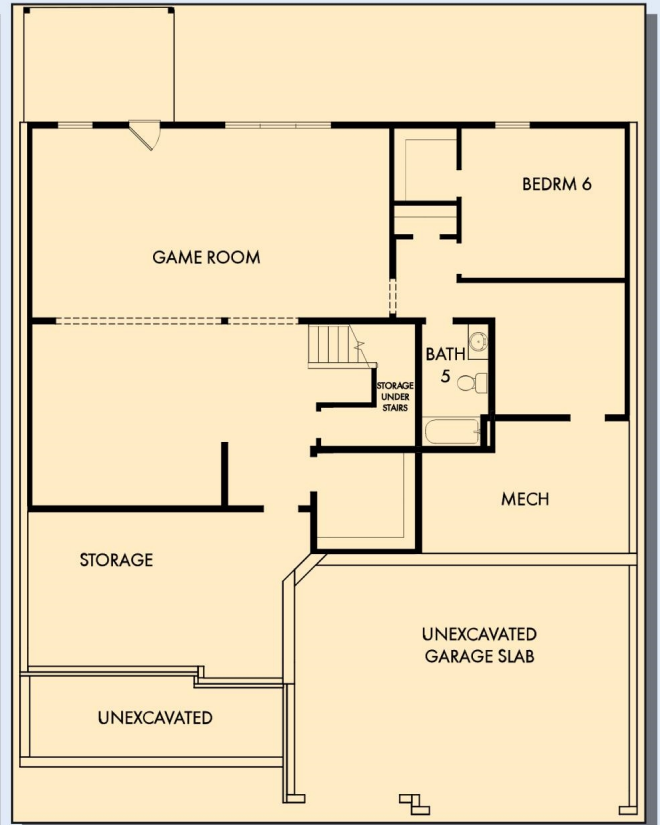
For additional options, please visit [DavidWeekleyHomes.com](http://DavidWeekleyHomes.com)

**DavidWeekleyHomes.com**

# THE WORTHDALE



OPTIONAL BASEMENT



OPTIONAL GAME ROOM WITH BEDROOM 6 AND BATH 5 AT BASEMENT

For additional options, please visit [DavidWeekleyHomes.com](http://DavidWeekleyHomes.com)

See a David Weekley Homes Sales Consultant for details. Prices, plans, dimensions, features, specifications, materials, and availability of homes or communities are subject to change without notice or obligation. Illustrations are artist's depictions only and may differ from completed improvements. Copyright © 2024 David Weekley Homes - All Rights Reserved. Atlanta, GA

**DavidWeekleyHomes.com**

