

THE NETTLEMAN



Exterior A



Exterior B

3,312 - 3,616 sq. ft.

5 Bedrooms

4 Full Baths

2 Car Garage

Lauren L.



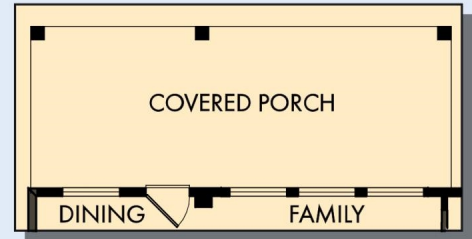
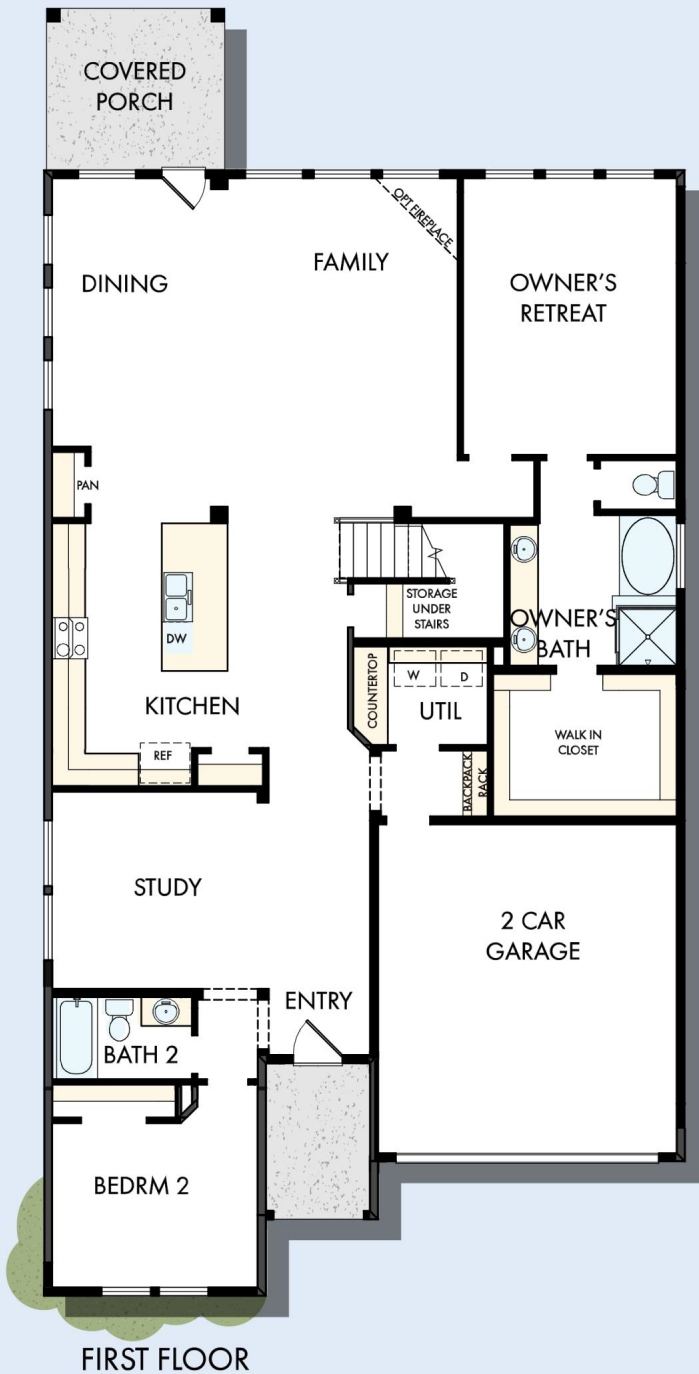
Home is where the heart is.

Years we waited to buy a house. Painful years of raising children in someone else's home. Years I got to ponder what it would be like to have something of my own. I envisioned my children sitting in their home, playing in their rooms, running through their yard...and the days of waiting were over, all of my research paid off. We bought the house of my dreams and were given the best sales associate and builder, down to my warranty specialist. Everything was easy and seamless. I felt like we were working together, like a team. Now, I have a beautiful house that I know was built with integrity. I could not be more grateful.

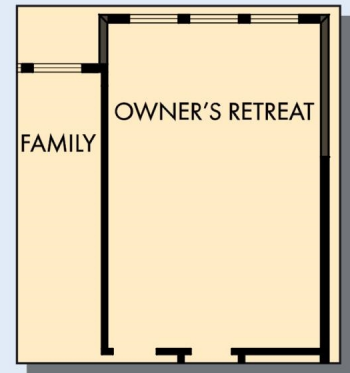
**David Weekley
Homes**

THE NETTLEMAN

3,312 - 3,616 sq. ft. • 5 Bedrooms • 4 Full Baths • 2 Car Garage



OPTIONAL EXTENDED COVERED PORCH



OPTIONAL EXTENDED OWNER'S RETREAT

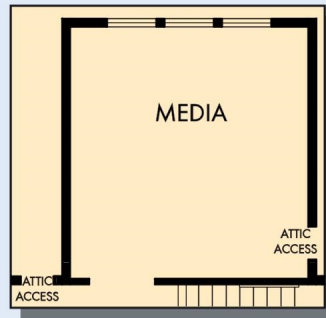


OPTIONAL DROP-IN TUB WITH SEPARATE SHOWER AT OWNER'S BATH



OPTIONAL SUPER SHOWER AT OWNER'S BATH

THE NETTLEMAN



OPTIONAL MEDIA AT REATREAT



SECOND FLOOR

For additional options, please visit DavidWeekleyHomes.com

See a David Weekley Homes Sales Consultant for details. Prices, plans, dimensions, features, specifications, materials, and availability of homes or communities are subject to change without notice or obligation. Illustrations are artist's depictions only and may differ from completed improvements. Copyright © 2022 David Weekley Homes - All Rights Reserved. Dallas/Ft. Worth, TX



DavidWeekleyHomes.com