

# THE KALE



Exterior A

2,356 - 2,357 sq. ft.

4 - 5 Bedrooms

3 - 5 Full Baths

0 - 1 Half Baths

3 Car Garage



Exterior C

**Shane**



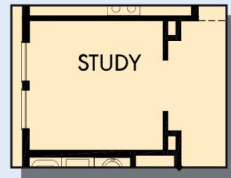
**We're living our fairytale thanks to David Weekley**

We can't say enough about the level of quality and care we received while building our home. Our builder was with us every step of the way to make sure our every need and desire was being met! The team truly went above and beyond at every turn to give us the home of our dreams! We will definitely recommend David Weekley to anyone looking to build a new home!

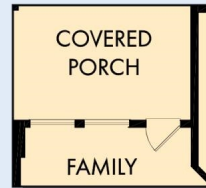
**David Weekley  
Homes**

# THE KALE

2,356 - 2,357 sq. ft. • 4 - 5 Bedrooms • 3 - 5 Full Baths • 0 - 1 Half Baths • 3 Car Garage



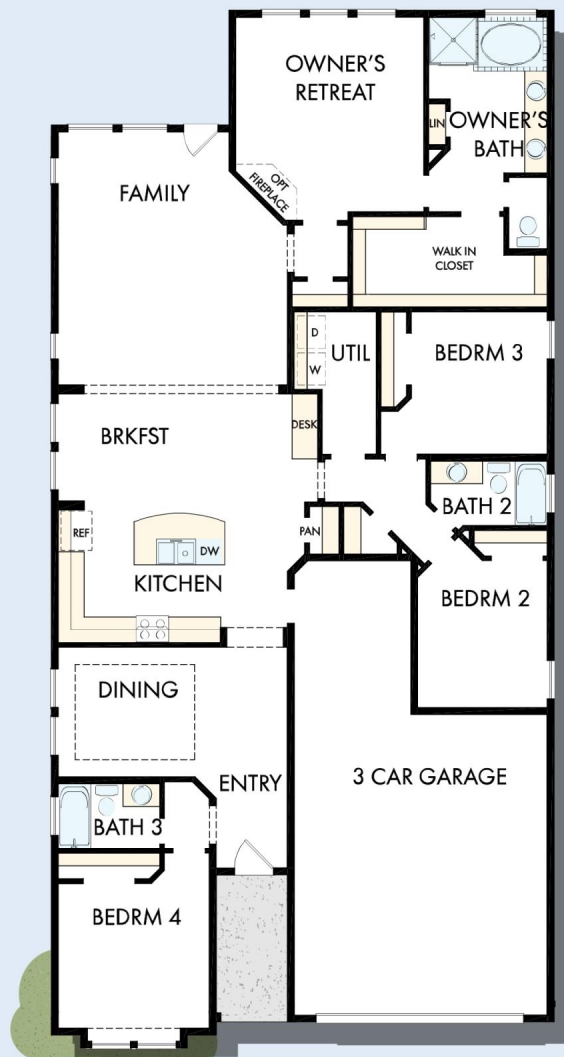
OPTIONAL STUDY AT DINING



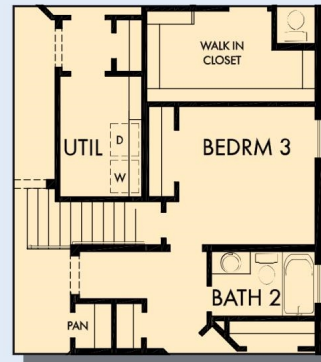
OPTIONAL COVERED PORCH AT FAMILY



OPTIONAL SUPER SHOWER AT OWNER'S BATH



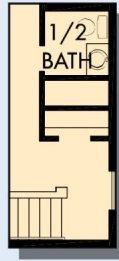
FIRST FLOOR



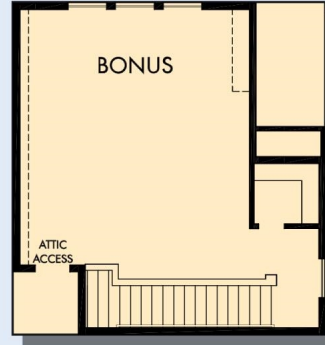
FIRST FLOOR WITH OPTIONAL SECOND FLOOR BONUS



# THE KALE



OPTIONAL HALF  
BATH AT BONUS  
CLOSET



OPTIONAL SECOND FLOOR BONUS

For additional options, please visit [DavidWeekleyHomes.com](http://DavidWeekleyHomes.com)



See a David Weekley Homes Sales Consultant for details.  
Prices, plans, dimensions, features, specifications, materials,  
and availability of homes or communities are subject to  
change without notice or obligation. Illustrations are artist's  
depictions only and may differ from completed improvements.  
Copyright © 2019 David Weekley Homes - All Rights Reserved.  
Houston, TX

## DavidWeekleyHomes.com