

THE COLTMAN



6260 SAN - C

Exterior C

3,261 - 3,290 sq. ft.

4 - 5 Bedrooms

3 - 4 Full Baths

1 Half Bath

3 Car Garage



6260 SAN - D

Exterior D

Crystal W.



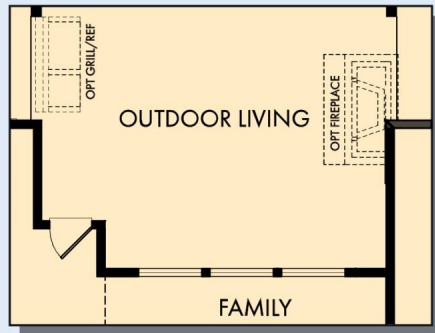
Welcome Home

My DWHome's experience has been truly 5-stars! From a floorplan concept, reserving a lot filled with dirt, the homebuilding project, to "Welcome Home", the entire process has been amazing. The team provided regular feedback and were always available to address questions and concerns. I was sold on the quality features. The entire team's availability and service has been exceptional before and after closing. Looking forward to enjoying our new home and neighbors for many years to come!

**David Weekley
Homes**

THE COLTMAN

3,261 - 3,290 sq. ft. • 4 - 5 Bedrooms • 3 - 4 Full Baths • 1 Half Bath • 3 Car Garage



OPTIONAL OUTDOOR LIVING
AT FAMILY



OPTIONAL SUPER SHOWER
AT OWNER'S BATH



FIRST FLOOR

6260 in 2405 SAN

For additional options, please visit DavidWeekleyHomes.com

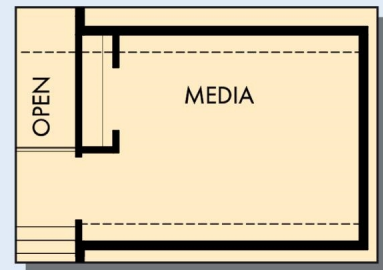
1/20/2021

DavidWeekleyHomes.com

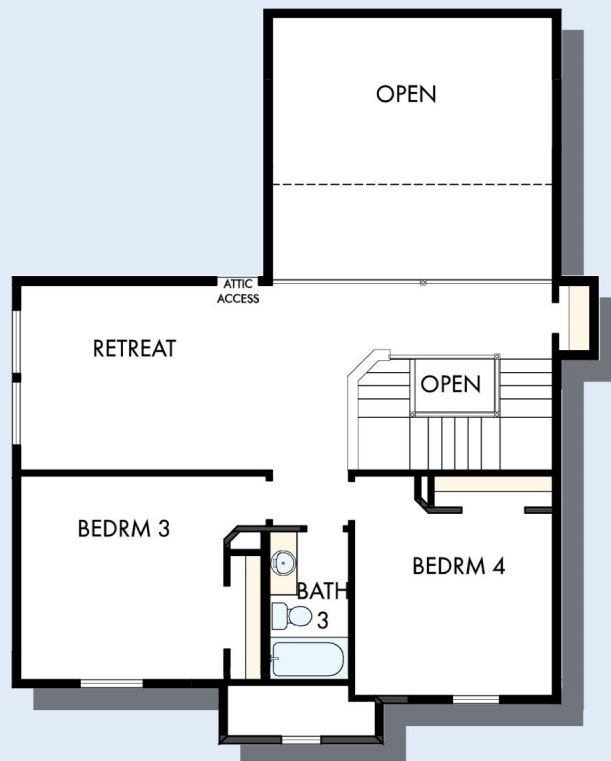
THE COLTMAN



OPTIONAL BEDROOM 5 AND BATH 4
AT RETREAT



OPTIONAL MEDIA AT HALL CLOSET



SECOND FLOOR

For additional options, please visit DavidWeekleyHomes.com



See a David Weekley Homes Sales Consultant for details.
Prices, plans, dimensions, features, specifications, materials,
and availability of homes or communities are subject to
change without notice or obligation. Illustrations are artist's
depictions only and may differ from completed improvements.
Copyright © 2021 David Weekley Homes - All Rights Reserved.
San Antonio, TX

DavidWeekleyHomes.com