

# THE ALDENRIDGE



6838 CTX - A

Exterior A

3,482 - 4,356 sq. ft.

4 Bedrooms

3 - 4 Full Baths

1 - 2 Half Baths

3 - 4 Car Garage



6838 CTX - B

Exterior B

**Rich C.**



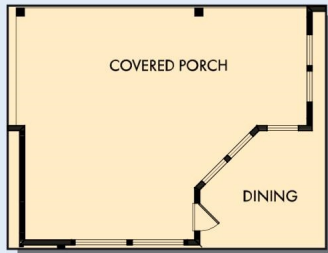
### **Wonderful Experience!**

If there is anything that sets David Weekley apart from other builders it is their customer service. I felt like a member of the family from the first time I walked into the model, to when I received my keys and saw the wonderful housewarming presents that were left for me, up to the present when I see my salesman in the neighborhood. I felt like they really took the time to understand what I was looking for and then came through with my dream home. I would highly recommend David Weekley to anyone looking to buy and/or build a home.

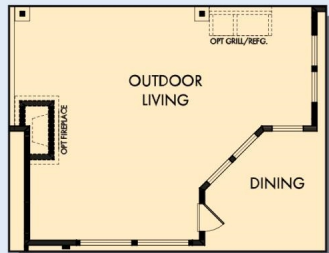
**David Weekley  
Homes**

# THE ALDENRIDGE

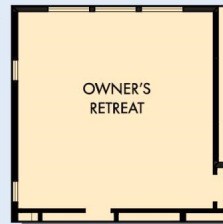
3,482 - 4,356 sq. ft. • 4 Bedrooms • 3 - 4 Full Baths • 1 - 2 Half Baths • 3 - 4 Car Garage



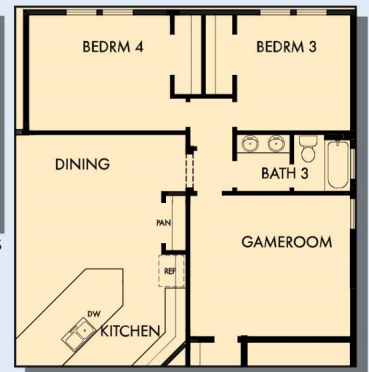
OPTIONAL EXTENDED COVERED PORCH AT FAMILY AND DINING



OPTIONAL OUTDOOR LIVING AT FAMILY AND DINING



OPTIONAL EXTENDED OWNER'S RETREAT



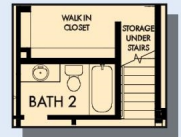
OPTIONAL GAMEROOM AT BEDROOM 4



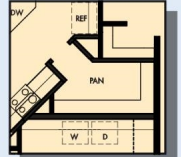
FIRST FLOOR



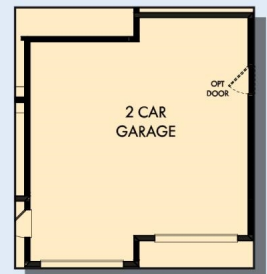
OPTIONAL SUPER SHOWER AT OWNER'S BATH



FIRST FLOOR WITH OPTIONAL SECOND FLOOR BONUS



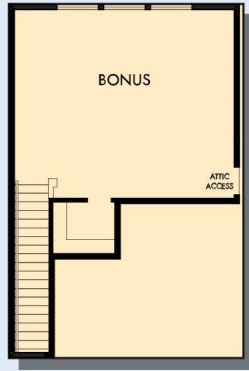
OPTIONAL SUPER PANTRY



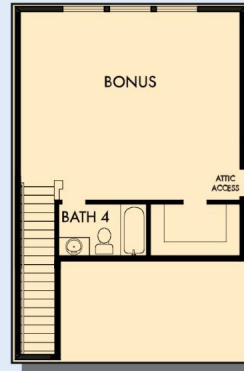
OPTIONAL 2 CAR GARAGE AT 1 CAR GARAGE



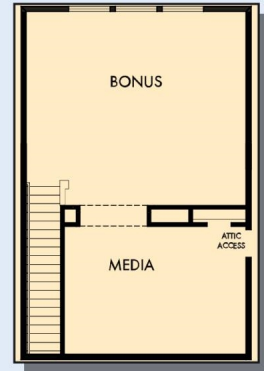
# THE ALDENRIDGE



OPTIONAL SECOND FLOOR BONUS



OPTIONAL SECOND FLOOR BONUS  
WITH BATH 4



OPTIONAL SECOND FLOOR BONUS  
WITH MEDIA

For additional options, please visit [DavidWeekleyHomes.com](http://DavidWeekleyHomes.com)

See a David Weekley Homes Sales Consultant for details. Prices, plans, dimensions, features, specifications, materials, and availability of homes or communities are subject to change without notice or obligation. Illustrations are artist's depictions only and may differ from completed improvements. Copyright © 2023 David Weekley Homes - All Rights Reserved. Austin, TX

**DavidWeekleyHomes.com**

