

# THE SPICOLA

sq. ft.

---

Bedrooms

---

Full Baths

---

Half Baths

---

Car Garage

**David Weekley  
Homes**

**Shane**



**We're living our fairytale thanks to David Weekley**

We can't say enough about the level of quality and care we received while building our home. Our builder was with us every step of the way to make sure our every need and desire was being met! The team truly went above and beyond at every turn to give us the home of our dreams! We will definitely recommend David Weekley to anyone looking to build a new home!

**Crystal W.**

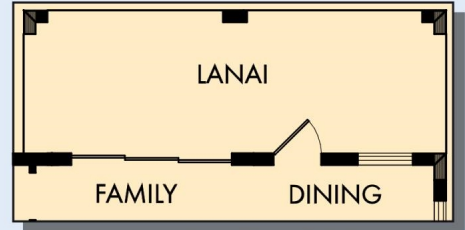


**Welcome Home**

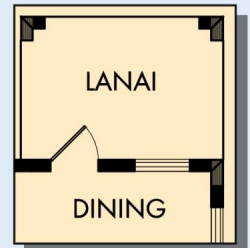
My DWHomes experience has been truly 5-stars! From a floorplan concept, reserving a lot filled with dirt, the homebuilding project, to "Welcome Home", the entire process has been amazing. The team provided regular feedback and were always available to address questions and concerns. I was sold on the quality features. The entire team's availability and service has been exceptional before and after closing. Looking forward to enjoying our new home and neighbors for many years to come!

# THE SPICOLA

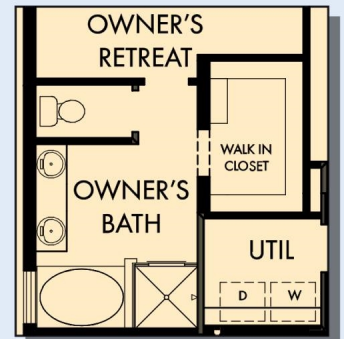
sq. ft. • Bedrooms • Full Baths • Half Baths • Car Garage



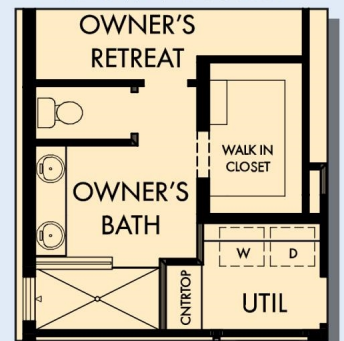
OPTIONAL EXTENDED LANAI AT FAMILY AND DINING



OPTIONAL LANAI AT DINING



OPTIONAL DROP-IN TUB WITH SEPARATE SHOWER AT OWNER'S BATH



OPTIONAL SUPER SHOWER AT OWNER'S BATH

F021 in TAM

For additional options, please visit [DavidWeekleyHomes.com](http://DavidWeekleyHomes.com)

3/4/2024

See a David Weekley Homes Sales Consultant for details. Prices, plans, dimensions, features, specifications, materials, and availability of homes or communities are subject to change without notice or obligation. Illustrations are artist's depictions only and may differ from completed improvements. Copyright © 2024 David Weekley Homes - All Rights Reserved. Tampa, FL

**DavidWeekleyHomes.com**

