

THE LORELLE



Exterior A

2,230 - 3,922 sq. ft.

3 - 6 Bedrooms

3 - 5 Full Baths

2 Car Garage



Exterior B

Crystal W.



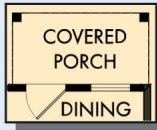
Welcome Home

My DWHomes experience has been truly 5-stars! From a floorplan concept, reserving a lot filled with dirt, the homebuilding project, to "Welcome Home", the entire process has been amazing. The team provided regular feedback and were always available to address questions and concerns. I was sold on the quality features. The entire team's availability and service has been exceptional before and after closing. Looking forward to enjoying our new home and neighbors for many years to come!

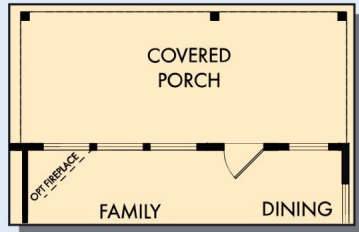
**David Weekley
Homes**

THE LORELLE

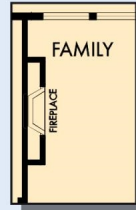
2,230 - 3,922 sq. ft. • 3 - 6 Bedrooms • 3 - 5 Full Baths • 2 Car Garage



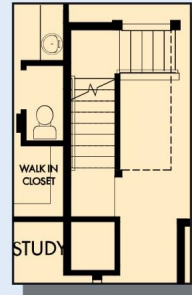
OPTIONAL COVERED PORCH AT DINING



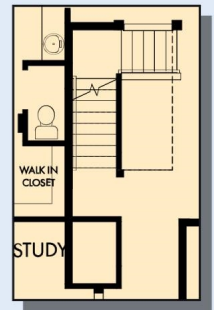
OPTIONAL EXTENDED COVERED PORCH AT FAMILY AND DINING



OPTIONAL WALL FIREPLACE AT FAMILY



FIRST FLOOR WITH OPTIONAL BASEMENT



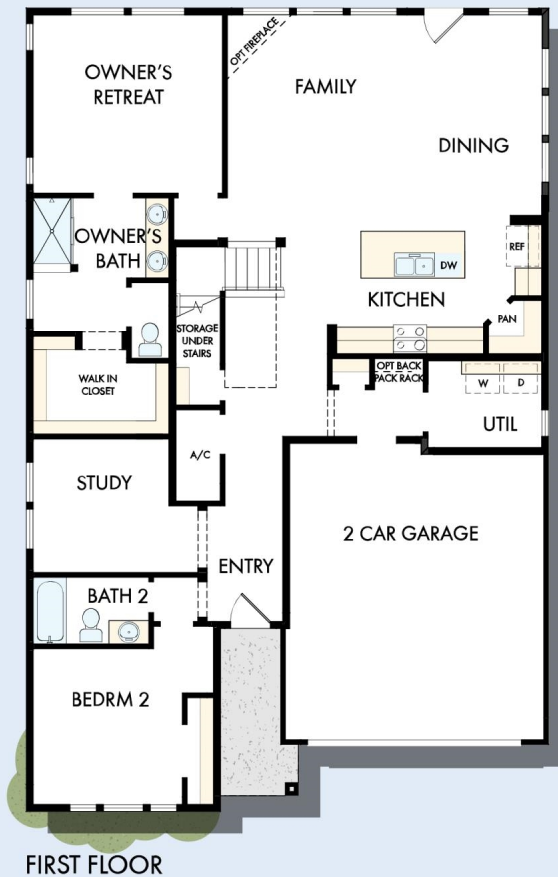
FIRST FLOOR WITH OPTIONAL FINISHED STAIRS



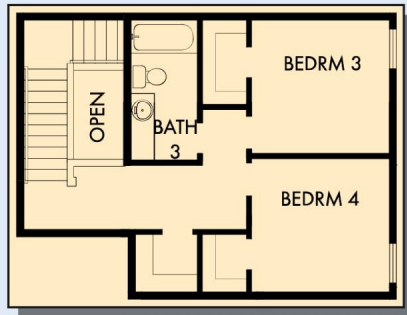
OPTIONAL DROP-IN TUB WITH SEPARATE SHOWER AT OWNER'S BATH



OPTIONAL SUPER SHOWER AT OWNER'S BATH



THE LORELLE



OPTIONAL BEDROOM 4 AT RETREAT

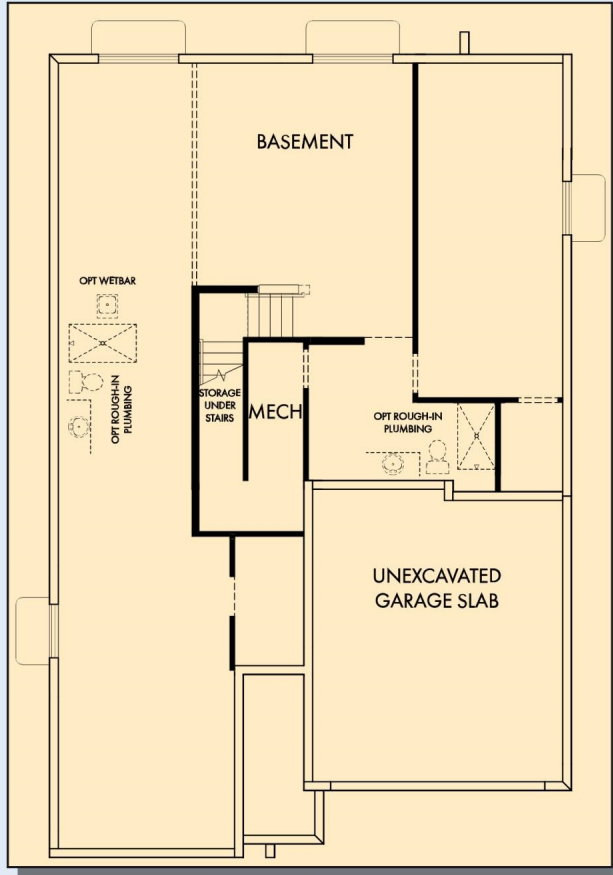


SECOND FLOOR

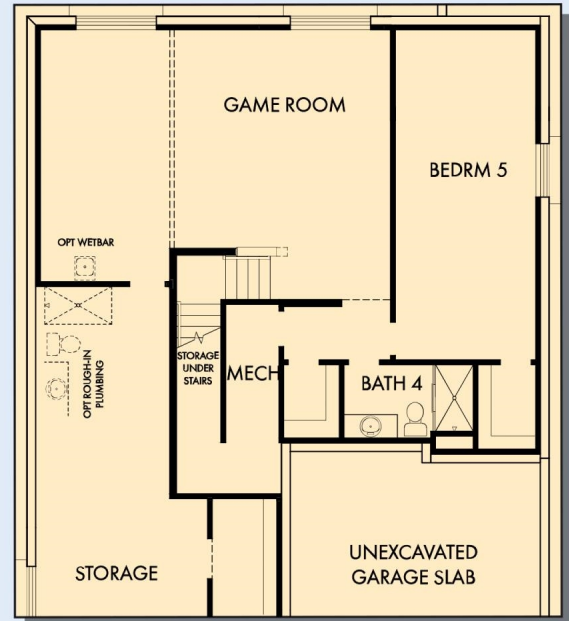
For additional options, please visit DavidWeekleyHomes.com

DavidWeekleyHomes.com

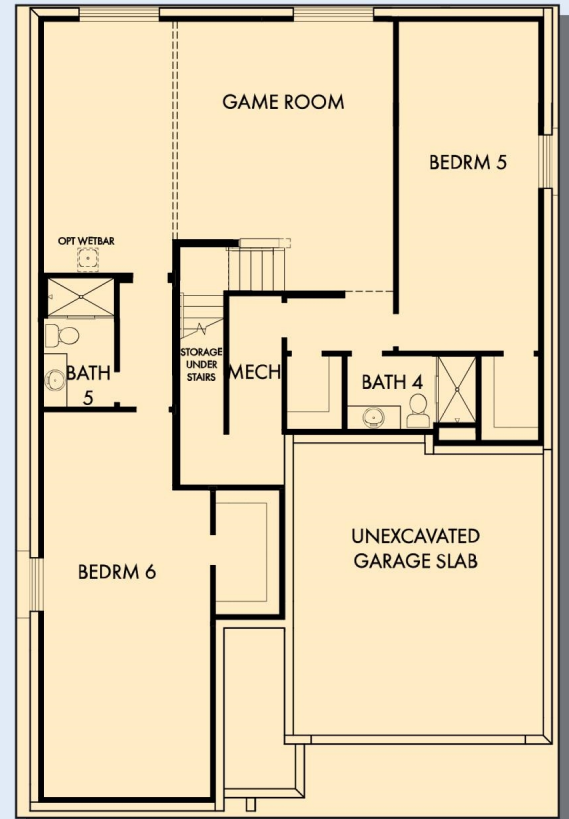
THE LORELLE



OPTIONAL BASEMENT



OPTIONAL GAME ROOM WITH BEDROOM 5 AND BATH 4 AT BASEMENT



OPTIONAL FINISHED BASEMENT

For additional options, please visit DavidWeekleyHomes.com

See a David Weekley Homes Sales Consultant for details. Prices, plans, dimensions, features, specifications, materials, and availability of homes or communities are subject to change without notice or obligation. Illustrations are artist's depictions only and may differ from completed improvements. Copyright © 2024 David Weekley Homes - All Rights Reserved. Salt Lake City, UT

DavidWeekleyHomes.com



EQUAL HOUSING OPPORTUNITY