

# THE NETTLEMAN



Exterior A

3,312 - 3,616 sq. ft.

5 Bedrooms

4 Full Baths

2 Car Garage



Exterior B

**Greg and Jane**



## **Exceptional service and experience!**

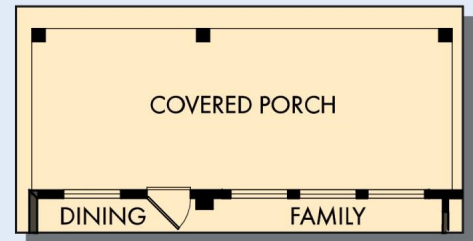
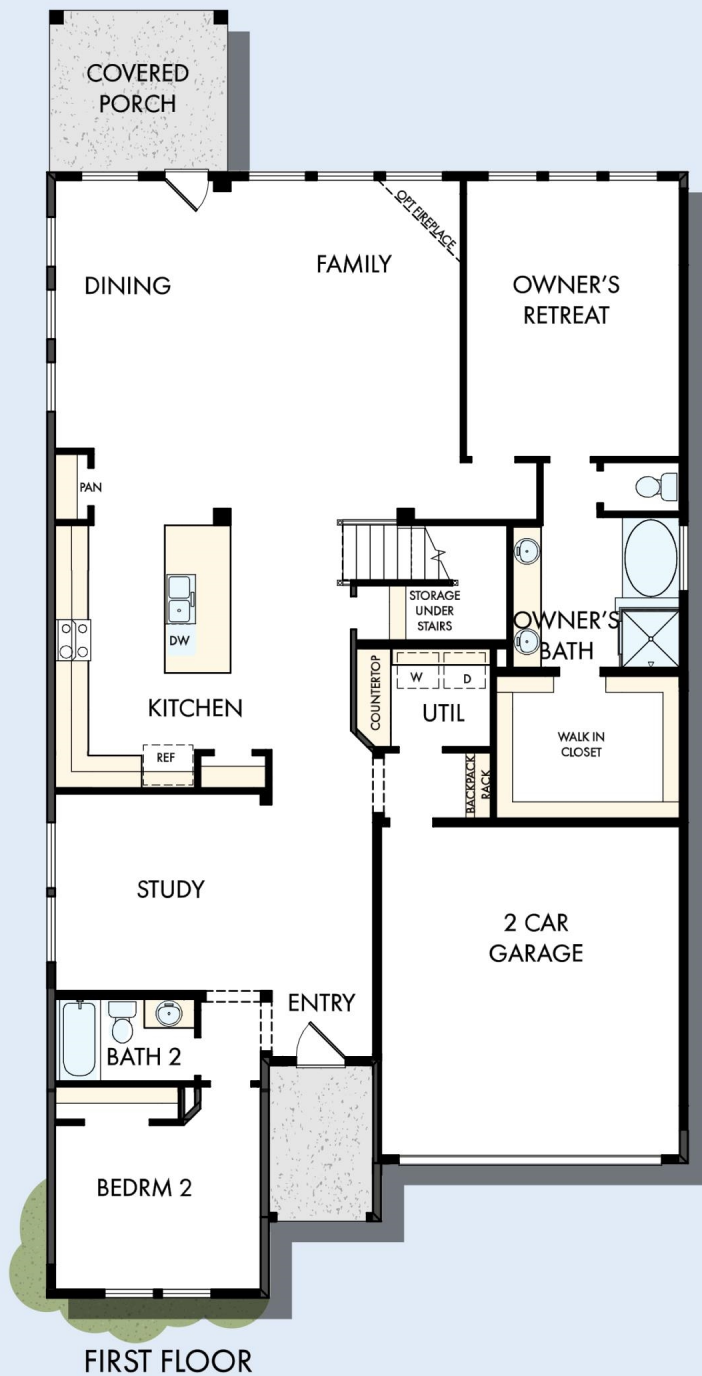
We have been fortunate enough to build several new homes and this was by far the best experience that we've encountered. We actually debated whether or not we wanted to go through the home building process again or simply purchase a pre-owned home or a finished new home. So pleased we built! Our Weekley team (sales associate, design consultant and builder) was very professional, courteous, attentive, responsive and pro-active from beginning to end. They've all become our adopted kids! Great overall experience!

**David Weekley  
Homes**

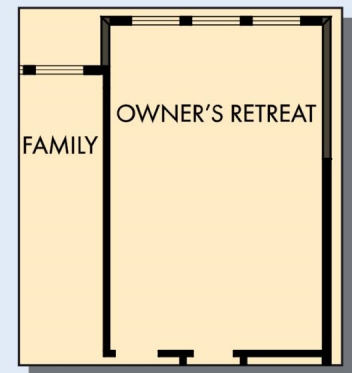


# THE NETTLEMAN

3,312 - 3,616 sq. ft. • 5 Bedrooms • 4 Full Baths • 2 Car Garage



OPTIONAL EXTENDED COVERED PORCH



OPTIONAL EXTENDED  
OWNER'S RETREAT

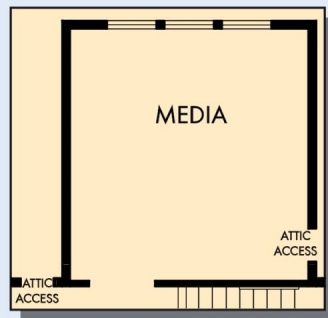


OPTIONAL DROP-IN  
TUB WITH SEPARATE  
SHOWER AT  
OWNER'S BATH



OPTIONAL SUPER  
SHOWER AT  
OWNER'S BATH

# THE NETTLEMAN



OPTIONAL MEDIA AT REATREAT



SECOND FLOOR

For additional options, please visit [DavidWeekleyHomes.com](http://DavidWeekleyHomes.com)



See a David Weekley Homes Sales Consultant for details. Prices, plans, dimensions, features, specifications, materials, and availability of homes or communities are subject to change without notice or obligation. Illustrations are artist's depictions only and may differ from completed improvements. Copyright © 2020 David Weekley Homes - All Rights Reserved. Dallas/Ft. Worth, TX

## DavidWeekleyHomes.com