

THE FORESTCREST



Exterior A

2,831 - 3,044 sq. ft.

3 - 6 Bedrooms

2 - 5 Full Baths

1 Half Bath

2 Car Garage



Exterior B

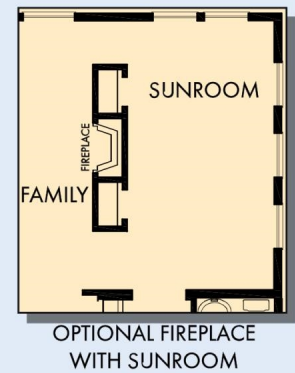
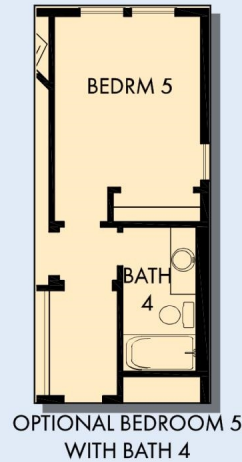
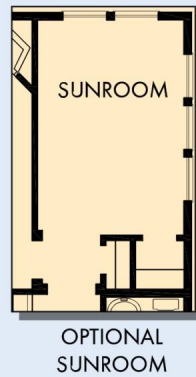
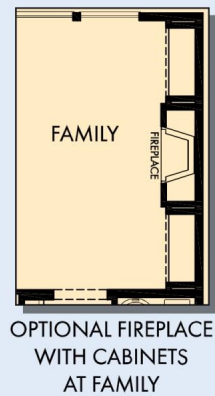
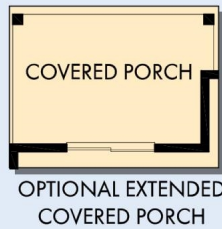


Exterior C

David Weekley
Homes

THE FORESTCREST

2,831 - 3,044 sq. ft. • 3 - 6 Bedrooms • 2 - 5 Full Baths • 1 Half Bath • 2 Car Garage



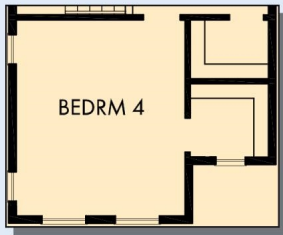
7779 in 6809 POR

For additional options, please visit DavidWeekleyHomes.com

7/5/2019

DavidWeekleyHomes.com

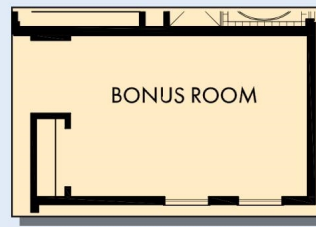
THE FORESTCREST



OPTIONAL BEDROOM 4 AT
RETREAT



OPTIONAL BEDROOM 6 AND BATH 5



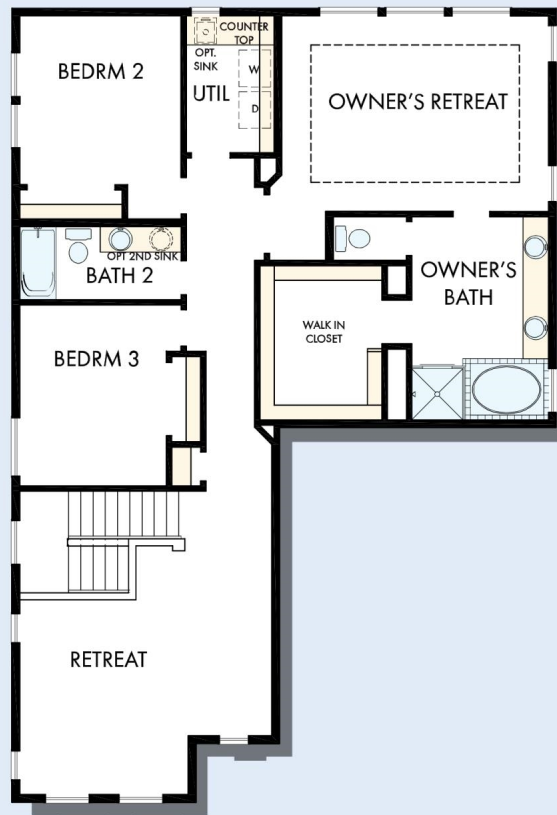
OPTIONAL BONUS ROOM



OPTIONAL SUPER
SHOWER AT
OWNER'S BATH



OPTIONAL SHOWER
WITH FULL GLASS
AT OWNER'S BATH



SECOND FLOOR

For additional options, please visit DavidWeekleyHomes.com

DavidWeekleyHomes.com



See a David Weekley Homes Sales Consultant for details. Prices, plans, dimensions, features, specifications, materials, and availability of homes or communities are subject to change without notice or obligation. Illustrations are artist's depictions only and may differ from completed improvements. Copyright © 2019 David Weekley Homes - All Rights Reserved. POR, OR