

THE FINLAY



Exterior A

3,216 - 3,224 sq. ft.

3 - 5 Bedrooms

2 - 3 Full Baths

1 Half Bath

2 Car Garage



Exterior B

Shane



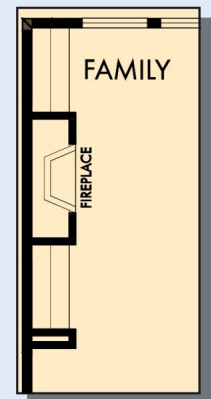
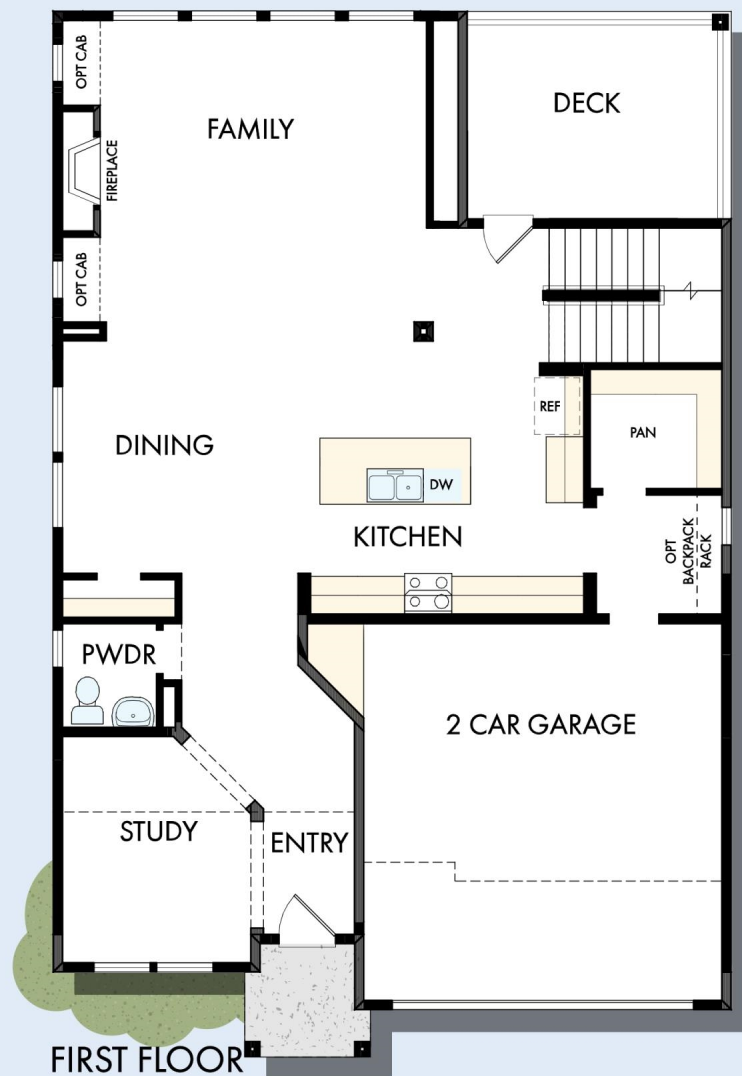
We're living our fairytale thanks to David Weekley

We can't say enough about the level of quality and care we received while building our home. Our builder was with us every step of the way to make sure our every need and desire was being met! The team truly went above and beyond at every turn to give us the home of our dreams! We will definitely recommend David Weekley to anyone looking to build a new home!

**David Weekley
Homes**

THE FINLAY

3,216 - 3,224 sq. ft. • 3 - 5 Bedrooms • 2 - 3 Full Baths • 1 Half Bath • 2 Car Garage



OPTIONAL WALL
FIREPLACE WITH
CABINETS
AT FAMILY

B688 in 6824 POR

For additional options, please visit DavidWeekleyHomes.com

10/24/2022

DavidWeekleyHomes.com

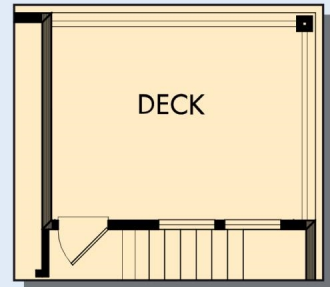
THE FINLAY



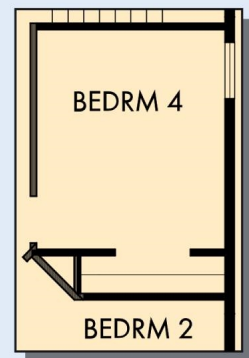
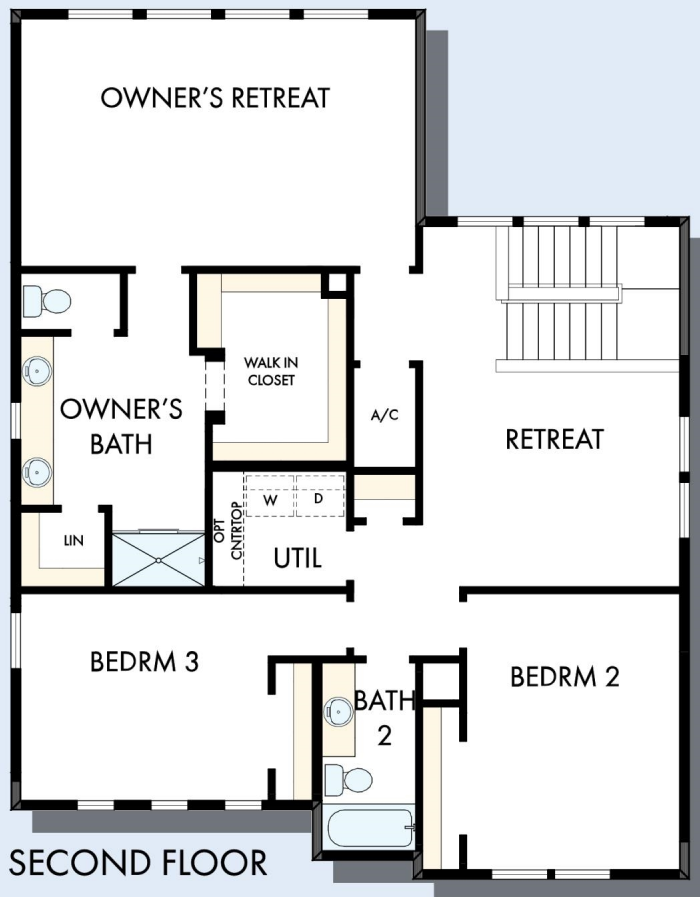
OPTIONAL FREE STANDING
TUB WITH SEPARATE SHOWER
AT OWNER'S BATH



OPTIONAL SUPER
SHOWER
AT OWNER'S BATH



SECOND FLOOR WITH
OPTIONAL DECK

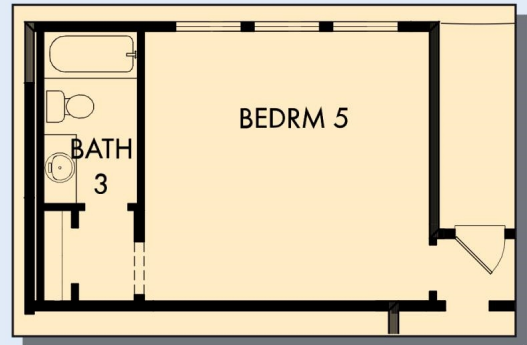
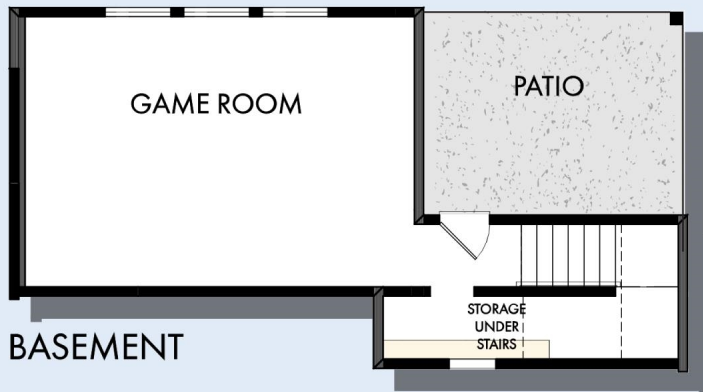


OPTIONAL
BEDROOM 4
AT RETREAT

For additional options, please visit DavidWeekleyHomes.com

DavidWeekleyHomes.com

THE FINLAY



OPTIONAL BEDROOM 5 WITH BATH 3
AT GAME ROOM



OPTIONAL BATH 3
AT GAME ROOM

For additional options, please visit DavidWeekleyHomes.com

DavidWeekleyHomes.com



See a David Weekley Homes Sales Consultant for details. Prices, plans, dimensions, features, specifications, materials, and availability of homes or communities are subject to change without notice or obligation. Illustrations are artist's depictions only and may differ from completed improvements. Copyright © 2022 David Weekley Homes - All Rights Reserved. POR, OR