

# THE BLUEBONNET



Exterior N



Exterior P

2,255 - 2,771 sq. ft.

3 Bedrooms

2 - 3 Full Baths

0 - 1 Half Baths

2 - 3 Car Garage

**David Weekley  
Homes**

**Sandra A.**

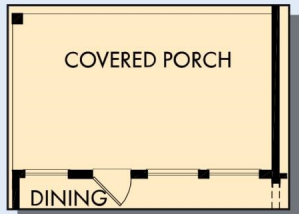


### **Best Builder Around**

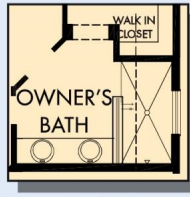
We have loved DW homes ever since our mother bought one. The quality of their work, attention to detail and willingness to respond to questions is top notch. The biggest thing we love about DW is their focus on customer service. They are not your typical builder who meets with you to get a check and forgets about you till walk thru. They are your partner through the entire process. Each step of the way they know they are building your dream house and really treat you like family. I would recommend them hands down. My husband sells real estate and has dealt with numerous builders around town. He always directs his clients to DW and signs their praises.

# THE BLUEBONNET

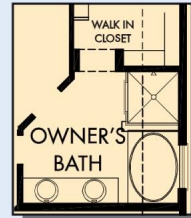
2,255 - 2,771 sq. ft. • 3 Bedrooms • 2 - 3 Full Baths • 0 - 1 Half Baths • 2 - 3 Car Garage



OPTIONAL EXTENDED COVERED PORCH AT DINING



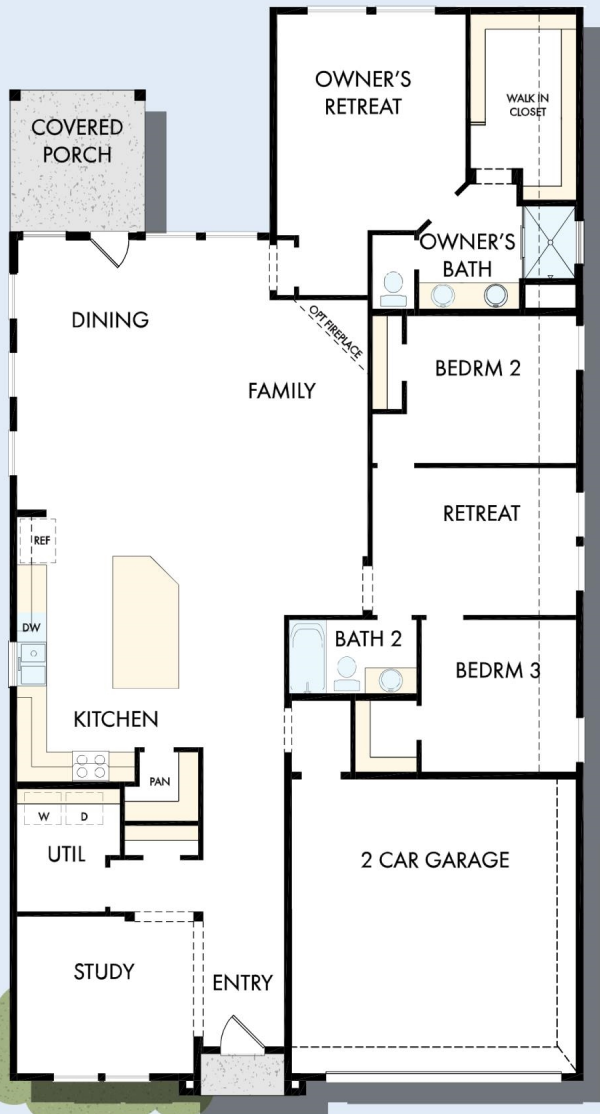
OPTIONAL SUPER SHOWER AT OWNER'S BATH



OPTIONAL SLIP IN TUB WITH SEPARATE SHOWER AT OWNER'S BATH



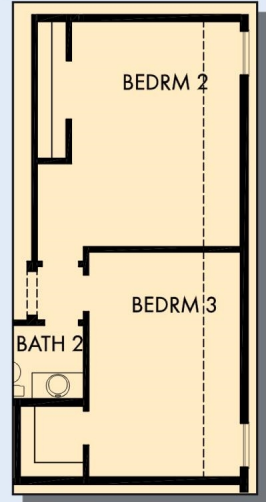
OPTIONAL DROP-IN TUB WITH SEPARATE SHOWER AT OWNER'S BATH



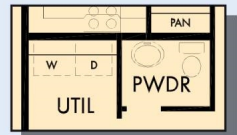
FIRST FLOOR



FIRST FLOOR WITH OPTIONAL SECOND FLOOR BONUS

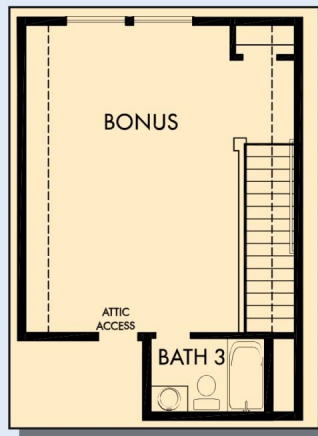


OPTIONAL EXTENDED BEDROOM 2 AND 3 AT RETREAT



OPTIONAL POWDER BATH AT HALL CLOSET

# THE BLUEBONNET



OPTIONAL SECOND FLOOR BONUS  
WITH BATH 3

For additional options, please visit [DavidWeekleyHomes.com](http://DavidWeekleyHomes.com)

See a David Weekley Homes Sales Consultant for details.  
Prices, plans, dimensions, features, specifications, materials,  
and availability of homes or communities are subject to  
change without notice or obligation. Illustrations are artist's  
depictions only and may differ from completed improvements.  
Copyright © 2024 David Weekley Homes - All Rights Reserved.  
Dallas/Ft. Worth, TX



**DavidWeekleyHomes.com**