

THE ALFIE



Exterior A

1,486 - 1,887 sq. ft.

3 - 4 Bedrooms

2 - 3 Full Baths

1 - 2 Half Baths

2 Car Garage



Exterior B



Exterior C

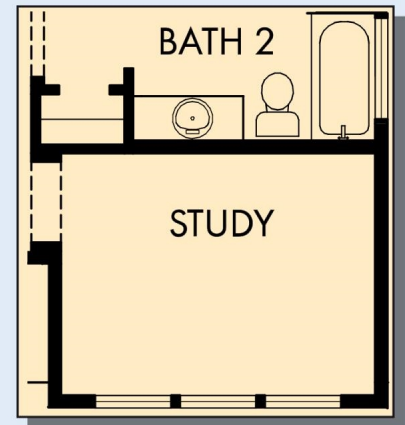
CENTRAL LIVING
by David Weekley Homes

THE ALFIE

1,486 - 1,887 sq. ft. • 3 - 4 Bedrooms • 2 - 3 Full Baths • 1 - 2 Half Baths • 2 Car Garage

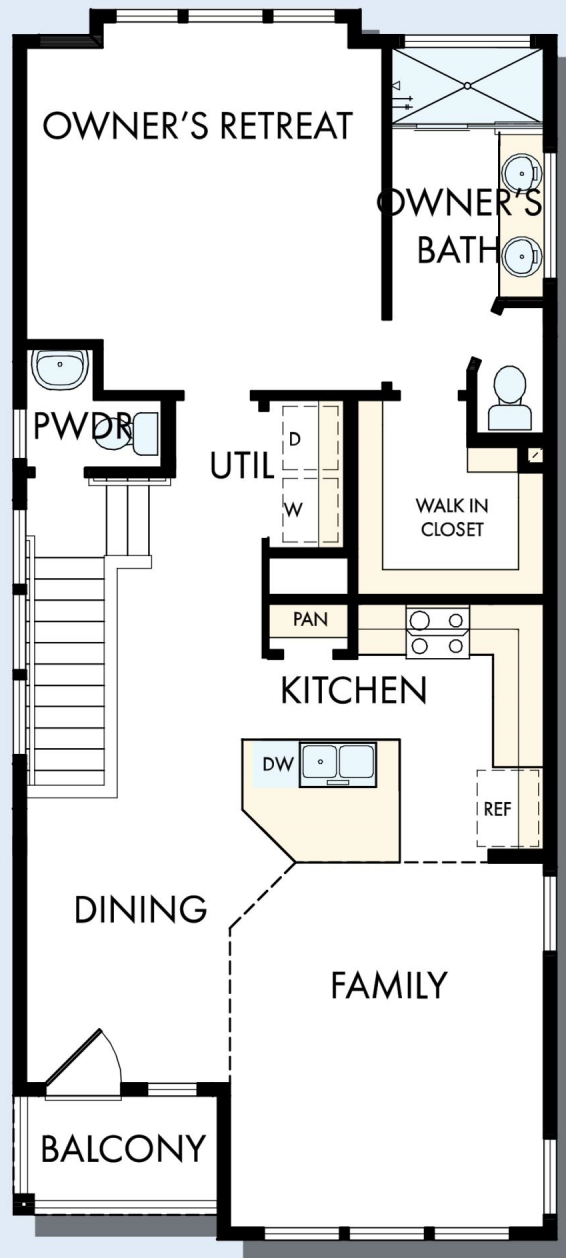


FIRST FLOOR

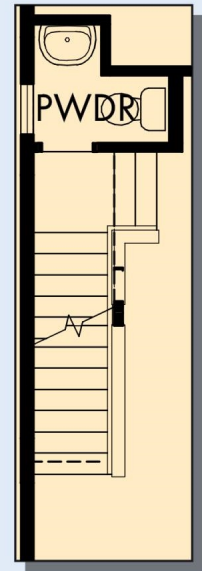


OPTIONAL STUDY AT
BEDROOM 2

THE ALFIE



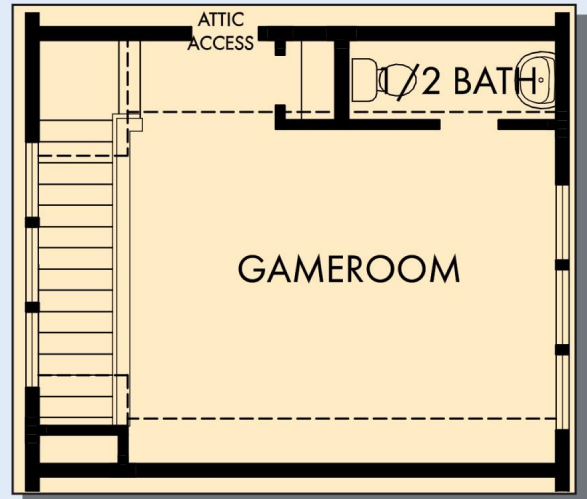
SECOND FLOOR



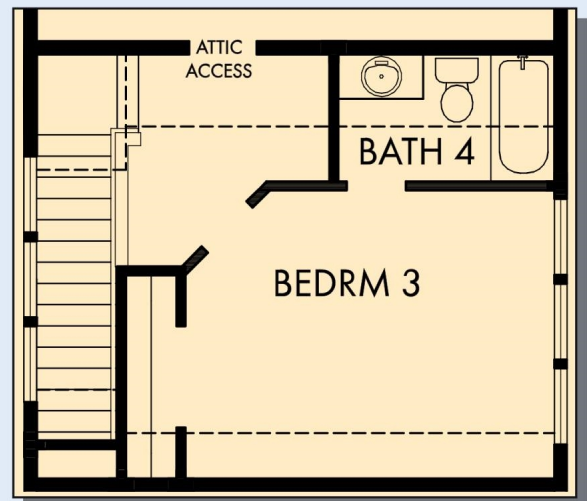
SECOND FLOOR
WITH OPTIONAL
GAMEROOM

For additional options, please visit DavidWeekleyHomes.com

THE ALFIE



OPTIONAL THIRD FLOOR
GAMEROOM WITH HALF BATH



OPTIONAL THIRD FLOOR
BEDROOM 3 WITH BATH 4

For additional options, please visit DavidWeekleyHomes.com



See a David Weekley Homes Sales Consultant for details. Prices, plans, dimensions, features, specifications, materials, and availability of homes or communities are subject to change without notice or obligation. Illustrations are artist's depictions only and may differ from completed improvements. Copyright © 2020 David Weekley Homes - All Rights Reserved. Austin, TX

CENTRAL LIVING
by David Weekley Homes