

THE NETTLEMAN



6584DAI-C

Exterior C

3,121 - 3,146 sq. ft.

5 - 6 Bedrooms

4 Full Baths

2 Car Garage



6584DAL-D

Exterior D

Gigi and Papa



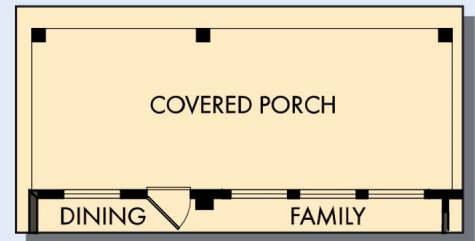
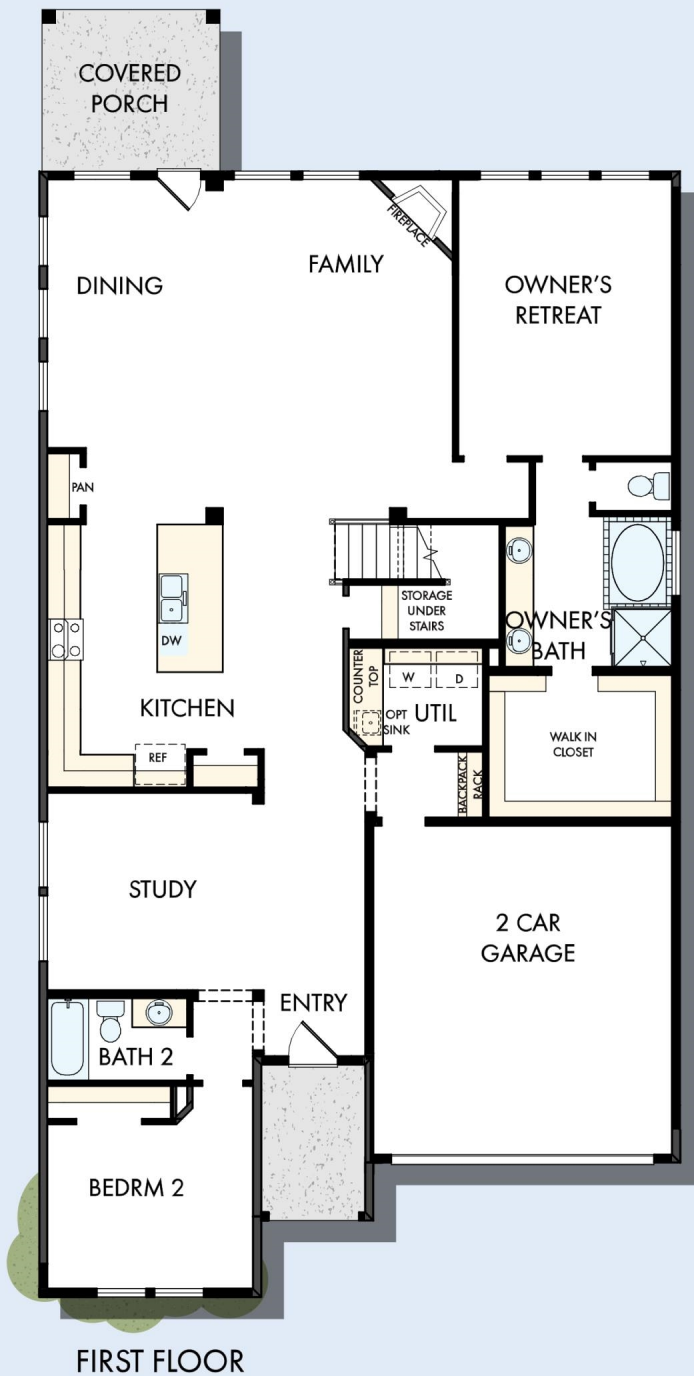
THE BESTest - Better than all the rest!

What an awesome and personal family-oriented company! From touring model homes to selecting "THE ONE" just for us, the experience was delightful and amazing! The entire David Weekley team has been exceptionally wonderful and always available to address any issues we encountered. We have been amazed and impressed by the "Service after the Sale" approach by the David Weekley staff. We would recommend David Weekley homes to anyone. We feel like we are an important member of the Weekley family!

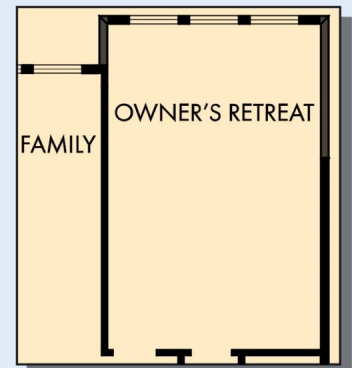
**David Weekley
Homes**

THE NETTLEMAN

3,121 - 3,146 sq. ft. • 5 - 6 Bedrooms • 4 Full Baths • 2 Car Garage



OPTIONAL EXTENDED COVERED PORCH

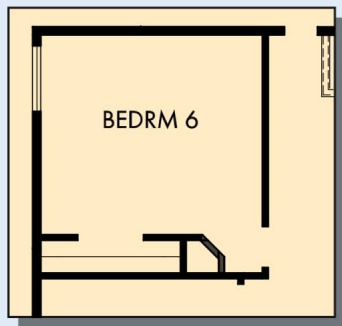


OPTIONAL EXTENDED OWNER'S RETREAT

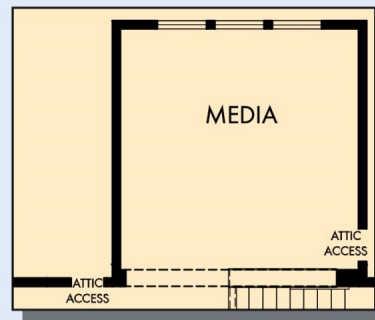


OPTIONAL SUPER SHOWER AT OWNER'S BATH

THE NETTLEMAN



OPTIONAL BEDROOM 6
AT RETREAT



OPTIONAL MEDIA



SECOND FLOOR

For additional options, please visit DavidWeekleyHomes.com



See a David Weekley Homes Sales Consultant for details. Prices, plans, dimensions, features, specifications, materials, and availability of homes or communities are subject to change without notice or obligation. Illustrations are artist's depictions only and may differ from completed improvements. Copyright © 2019 David Weekley Homes - All Rights Reserved. Dallas/Ft. Worth, TX

DavidWeekleyHomes.com