

THE CLIPPARD



Exterior A



Exterior B

2,193 - 2,210 sq. ft.

3 - 4 Bedrooms

2 - 4 Full Baths

0 - 2 Half Baths

2 Car Garage

Gigi and Papa



THE BESTest - Better than all the rest!

What an awesome and personal family-oriented company! From touring model homes to selecting "THE ONE" just for us, the experience was delightful and amazing! The entire David Weekley team has been exceptionally wonderful and always available to address any issues we encountered. We have been amazed and impressed by the "Service after the Sale" approach by the David Weekley staff. We would recommend David Weekley homes to anyone. We feel like we are an important member of the Weekley family!

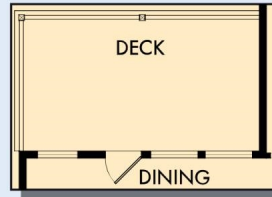
**David Weekley
Homes**

THE CLIPPARD

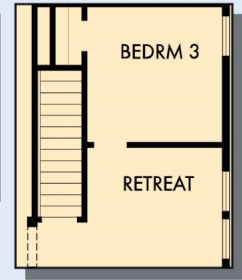
2,193 - 2,210 sq. ft. • 3 - 4 Bedrooms • 2 - 4 Full Baths • 0 - 2 Half Baths • 2 Car Garage



OPTIONAL COVERED PORCH AT DINING



DECK WITH OPTIONAL BASEMENT



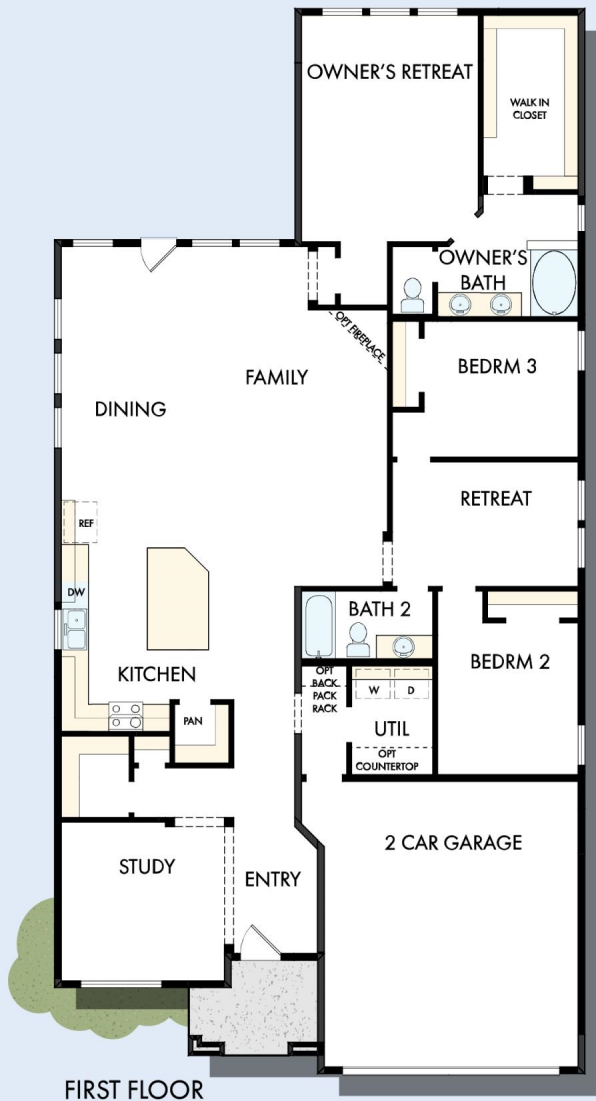
FIRST FLOOR WITH OPTIONAL BASEMENT



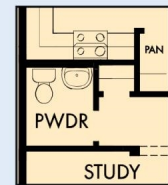
OPTIONAL EXTENDED BEDROOM 2 AND 3



FIRST FLOOR WITH OPTIONAL SECOND FLOOR BONUS



FIRST FLOOR



OPTIONAL POWDER BATH AT HALL WAY

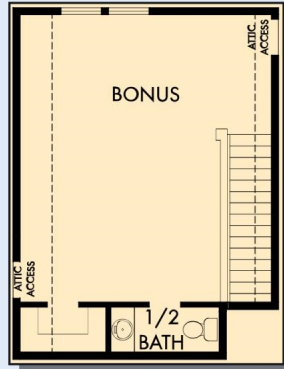


OPTIONAL SUPER SHOWER AT OWNER'S BATH

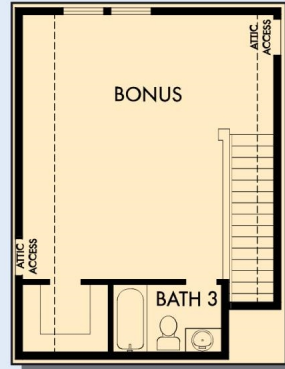


OPTIONAL SLIDE-IN TUB WITH SEPARATE SHOWER AT OWNER'S BATH

THE CLIPPARD



OPTIONAL SECOND FLOOR
BONUS WITH HALF BATH



OPTIONAL SECOND FLOOR
BONUS WITH BATH 3

For additional options, please visit DavidWeekleyHomes.com

See a David Weekley Homes Sales Consultant for details. Prices, plans, dimensions, features, specifications, materials, and availability of homes or communities are subject to change without notice or obligation. Illustrations are artist's depictions only and may differ from completed improvements. Copyright © 2024 David Weekley Homes - All Rights Reserved. Nashville, TN

DavidWeekleyHomes.com

