

# THE HARTMAN



Exterior A

2,783 - 3,735 sq. ft.

3 Bedrooms

3 - 4 Full Baths

1 - 2 Half Baths

3 - 4 Car Garage



Exterior B

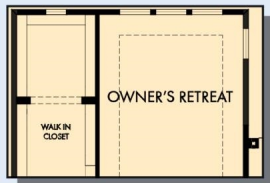


Exterior C

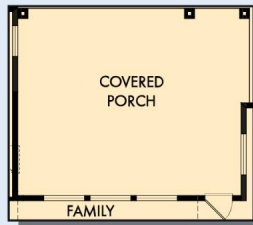
David Weekley  
Homes

# THE HARTMAN

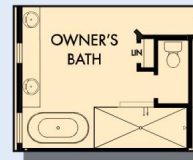
2,783 - 3,735 sq. ft. • 3 Bedrooms • 3 - 4 Full Baths • 1 - 2 Half Baths • 3 - 4 Car Garage



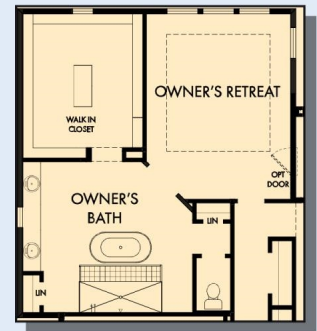
OPTIONAL EXTENDED OWNER'S RETREAT



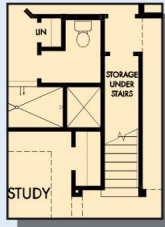
OPTIONAL EXTENDED COVERED PORCH



OPTIONAL FREE STANDING TUB  
WITH SUPER SHOWER  
AT OWNER'S BATH



OPTIONAL SUPER OWNER'S BATH



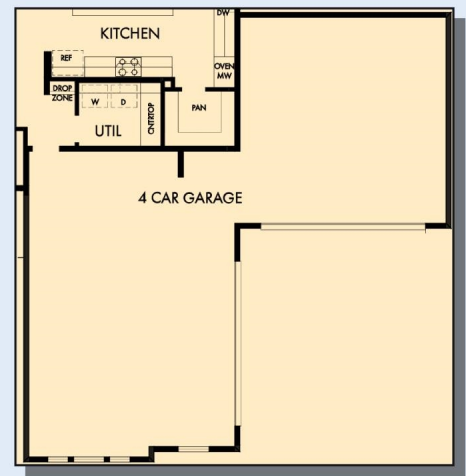
FIRST FLOOR WITH OPTIONAL  
SECOND FLOOR BONUS



OPTIONAL OUTDOOR LIVING



FIRST FLOOR



OPTIONAL 4 CAR GARAGE

# THE HARTMAN



OPTIONAL SECOND FLOOR BONUS



OPTIONAL SECOND FLOOR BONUS  
WITH BATH 4

For additional options, please visit [DavidWeekleyHomes.com](http://DavidWeekleyHomes.com)



See a David Weekley Homes Sales Consultant for details.  
Prices, plans, dimensions, features, specifications, materials,  
and availability of homes or communities are subject to  
change without notice or obligation. Illustrations are artist's  
depictions only and may differ from completed improvements.  
Copyright © 2021 David Weekley Homes - All Rights Reserved.  
Austin, TX

## DavidWeekleyHomes.com