

THE WOODSIDE



Exterior A

3,541 sq. ft.

3 - 4 Bedrooms

3 - 4 Full Baths

1 Half Bath

3 - 4 Car Garage

Chelsea



Incredible Experience, Incredible Home!

We trusted the team from Day 1 and couldn't have asked for a better experience. The attention to detail was fantastic, and we felt as if the DWH team had a personal interest in the success of our home. The process was well defined and every team member set very clear expectations. We love every inch of our home, and we'd definitely recommend DWH!

Shane



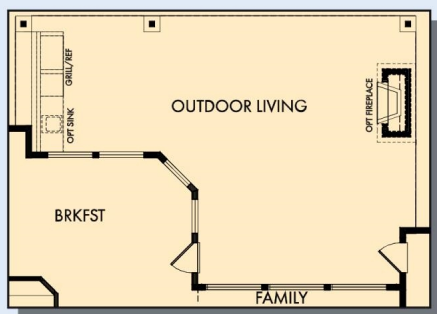
We're living our fairytale thanks to David Weekley

We can't say enough about the level of quality and care we received while building our home. Our builder was with us every step of the way to make sure our every need and desire was being met! The team truly went above and beyond at every turn to give us the home of our dreams! We will definitely recommend David Weekley to anyone looking to build a new home!

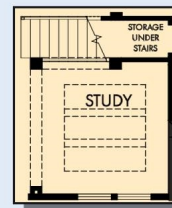
**David Weekley
Homes**

THE WOODSIDE

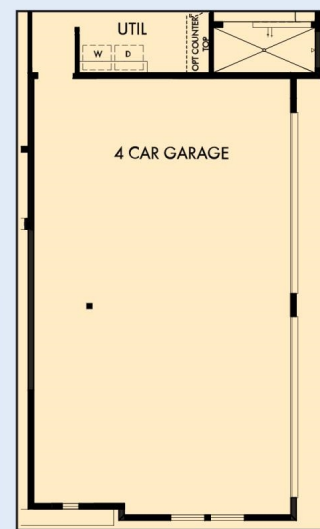
3,541 sq. ft. • 3 - 4 Bedrooms • 3 - 4 Full Baths • 1 Half Bath • 3 - 4 Car Garage



OPTIONAL OUTDOOR LIVING AT FAMILY



FIRST FLOOR WITH OPTIONAL
SECOND FLOOR BONUS



OPTIONAL 4 CAR GARAGE

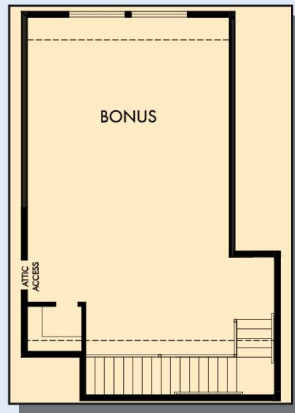
6205 in 2402 SAN

For additional options, please visit DavidWeekleyHomes.com

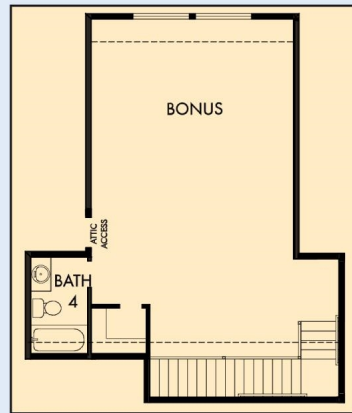
6/15/2022

DavidWeekleyHomes.com

THE WOODSIDE



OPTIONAL SECOND FLOOR BONUS



OPTIONAL SECOND FLOOR BONUS WITH BATH 4

For additional options, please visit DavidWeekleyHomes.com



See a David Weekley Homes Sales Consultant for details. Prices, plans, dimensions, features, specifications, materials, and availability of homes or communities are subject to change without notice or obligation. Illustrations are artist's depictions only and may differ from completed improvements. Copyright © 2022 David Weekley Homes - All Rights Reserved. San Antonio, TX

DavidWeekleyHomes.com