

THE ESCHER



Exterior A

2,544 - 5,088 sq. ft.

4 - 7 Bedrooms

3 - 4 Full Baths

3 Car Garage



Exterior B

Crystal W.



Welcome Home

My DWHome experience has been truly 5-stars! From a floorplan concept, reserving a lot filled with dirt, the homebuilding project, to "Welcome Home", the entire process has been amazing. The team provided regular feedback and were always available to address questions and concerns. I was sold on the quality features. The entire team's availability and service has been exceptional before and after closing. Looking forward to enjoying our new home and neighbors for many years to come!

**David Weekley
Homes**

THE ESCHER

2,544 - 5,088 sq. ft. • 4 - 7 Bedrooms • 3 - 4 Full Baths • 3 Car Garage



OPTIONAL EXTENDED
OWNER'S RETREAT



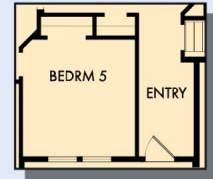
OPTIONAL FREE STANDING
TUB WITH SEPARATE SHOWER
AT OWNER'S BATH



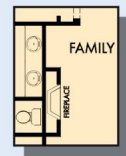
OPTIONAL DROP IN TUB
WITH SEPARATE SHOWER
AT OWNER'S BATH



OPTIONAL SUPER SHOWER
AT OWNER'S BATH

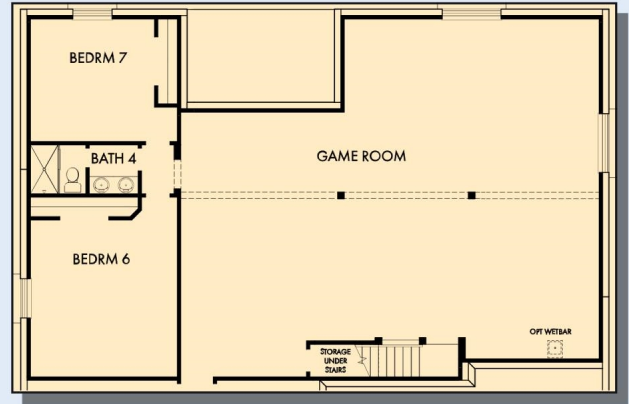


OPTIONAL BEDROOM 5
AT STUDY



OPTIONAL WALL
FIREPLACE
AT FAMILY

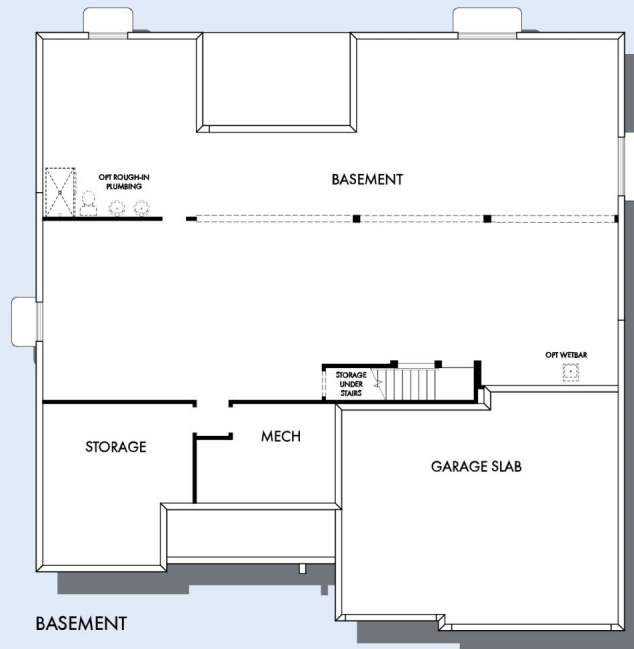
THE ESCHER



OPTIONAL GAME ROOM WITH BEDROOM 7,6 AND BATH4 AT BASEMENT



OPTIONAL WETBAR AT GAME ROOM



For additional options, please visit DavidWeekleyHomes.com

See a David Weekley Homes Sales Consultant for details. Prices, plans, dimensions, features, specifications, materials, and availability of homes or communities are subject to change without notice or obligation. Illustrations are artist's depictions only and may differ from completed improvements. Copyright © 2024 David Weekley Homes - All Rights Reserved. Salt Lake City, UT

DavidWeekleyHomes.com

