

# THE PERKINS



Exterior B

2,140 - 2,587 sq. ft.

2 - 4 Bedrooms

2 - 3 Full Baths

0 - 1 Half Baths

2 Car Garage



Exterior C

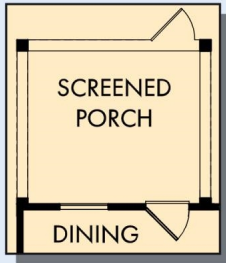


Exterior D

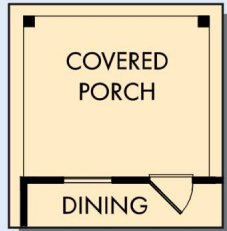
**Encore**  
by David Weekley Homes

# THE PERKINS

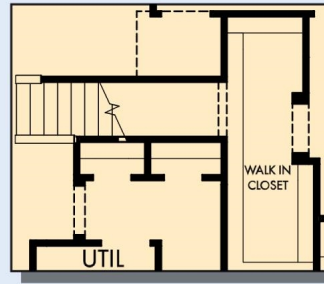
2,140 - 2,587 sq. ft. • 2 - 4 Bedrooms • 2 - 3 Full Baths • 0 - 1 Half Baths • 2 Car Garage



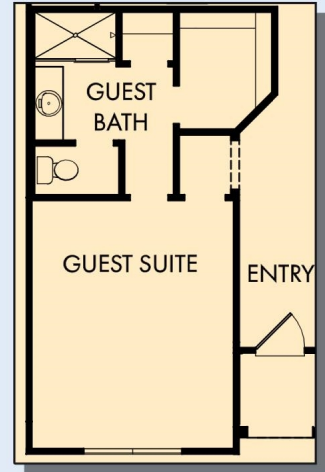
OPTIONAL SCREENED PORCH AT DINING



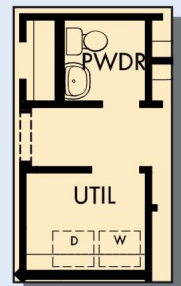
OPTIONAL COVERED PORCH AT DINING



FIRST FLOOR WITH OPTIONAL SECOND FLOOR BONUS



OPTIONAL GUEST SUITE AT BEDROOM 2 AND 3



OPTIONAL POWDER BATH AT HALLWAY



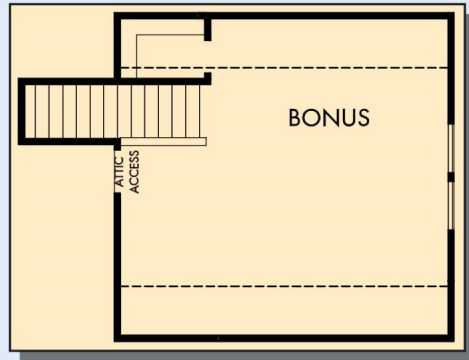
FIRST FLOOR

7851 in 3620 CHA

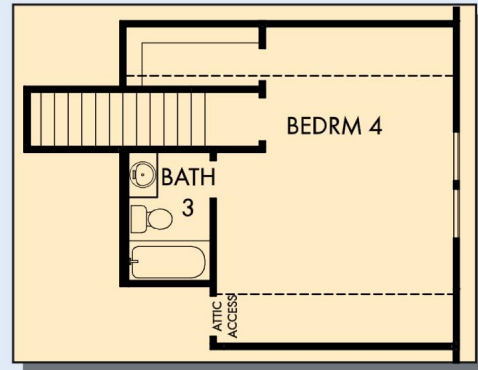
For additional options, please visit [DavidWeekleyHomes.com](http://DavidWeekleyHomes.com)

7/11/2024

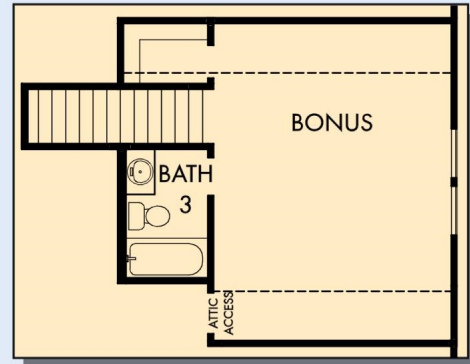
# THE PERKINS



OPTIONAL SECOND FLOOR BONUS



OPTIONAL SECOND FLOOR WITH BEDROOM 4 AND BATH 3



OPTIONAL SECOND FLOOR BONUS WITH BATH 3

For additional options, please visit [DavidWeekleyHomes.com](http://DavidWeekleyHomes.com)

See a David Weekley Homes Sales Consultant for details. Prices, plans, dimensions, features, specifications, materials, and availability of homes or communities are subject to change without notice or obligation. Illustrations are artist's depictions only and may differ from completed improvements. Copyright © 2024 David Weekley Homes - All Rights Reserved. Charlotte, NC



**Encore**  
by David Weekley Homes