

THE PALOMAR



6236 SAN-G

Exterior G

2,841 - 3,002 sq. ft.

4 Bedrooms

3 Full Baths

1 Half Bath

2 - 3 Car Garage



6236SAN-D

Exterior D



6236SAN-H

Exterior H

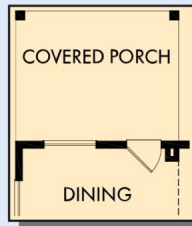
David Weekley
Homes

THE PALOMAR

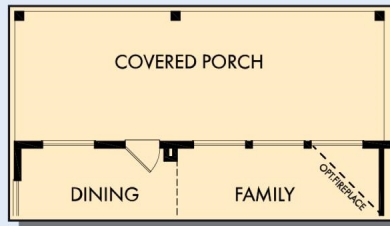
2,841 - 3,002 sq. ft. • 4 Bedrooms • 3 Full Baths • 1 Half Bath • 2 - 3 Car Garage



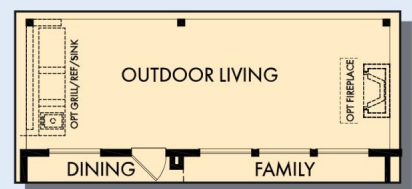
OPTIONAL BAY WINDOW
AT OWNER'S RETREAT



OPTIONAL COVERED
PORCH AT DINING



OPTIONAL EXTENDED COVERED PORCH
AT DINING AND FAMILY



OPTIONAL OUTDOOR LIVING
AT DINING AND FAMILY



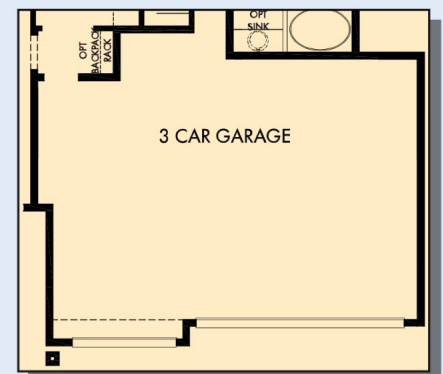
OPTIONAL BEDROOM 5
AND BATH 4 AT STUDY



OPTIONAL
SUPER SHOWER
AT OWNER'S BATH

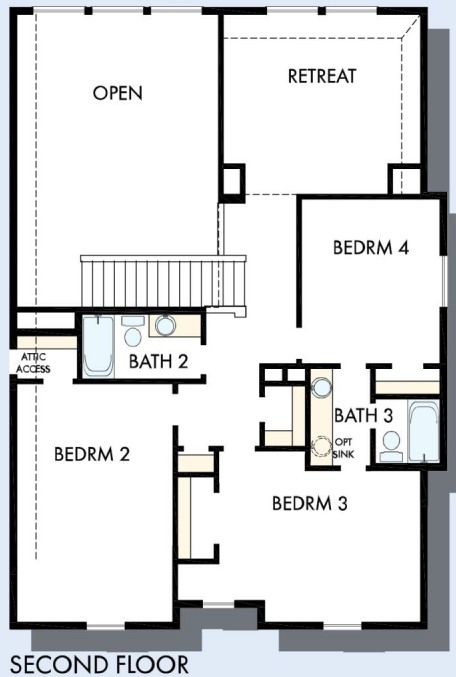


FIRST FLOOR



OPTIONAL 3 CAR GARAGE

THE PALOMAR



For additional options, please visit DavidWeekleyHomes.com



See a David Weekley Homes Sales Consultant for details. Prices, plans, dimensions, features, specifications, materials, and availability of homes or communities are subject to change without notice or obligation. Illustrations are artist's depictions only and may differ from completed improvements. Copyright © 2022 David Weekley Homes - All Rights Reserved. San Antonio, TX

DavidWeekleyHomes.com