

# THE RIVERGROVE



Exterior A



Exterior B

1,647 - 1,591 sq. ft.

3 Bedrooms

2 Full Baths

1 Half Bath

2 Car Garage

**Sandra A.**



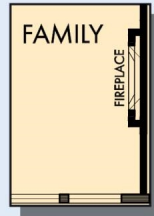
## **Best Builder Around**

We have loved DW homes ever since our mother bought one. The quality of their work, attention to detail and willingness to respond to questions is top notch. The biggest thing we love about DW is their focus on customer service. They are not your typical builder who meets with you to get a check and forgets about you till walk thru. They are your partner through the entire process. Each step of the way they know they are building your dream house and really treat you like family. I would recommend them hands down. My husband sells real estate and has dealt with numerous builders around town. He always directs his clients to DW and signs their praises.

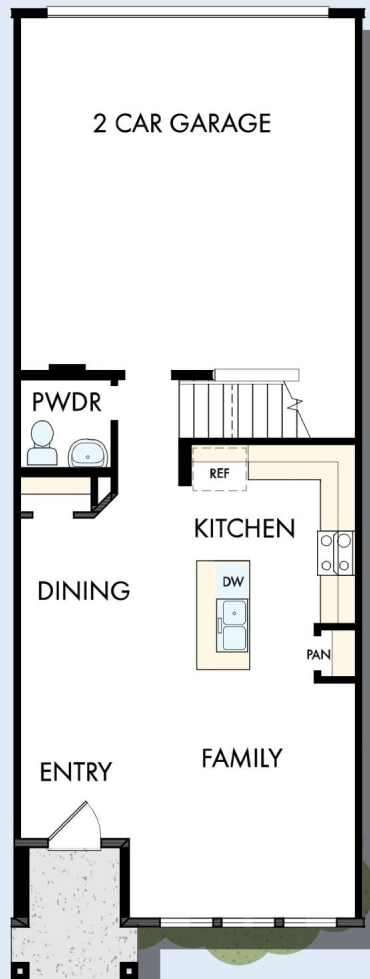
**David Weekley  
Homes**

# THE RIVERGROVE

1,647 - 1,591 sq. ft. • 3 Bedrooms • 2 Full Baths • 1 Half Bath • 2 Car Garage



OPTIONAL WALL  
FIREPLACE  
AT FAMILY



FIRST FLOOR

B171 in 6808 POR

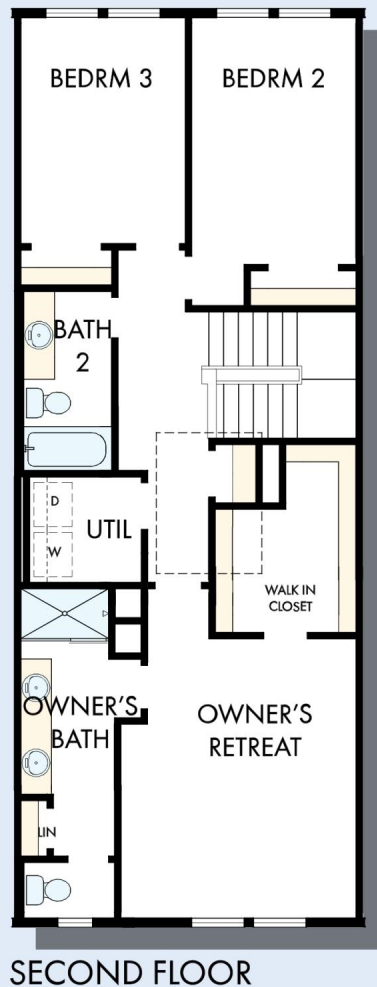
For additional options, please visit [DavidWeekleyHomes.com](http://DavidWeekleyHomes.com)

1/25/2021

**DavidWeekleyHomes.com**



# THE RIVERGROVE



For additional options, please visit [DavidWeekleyHomes.com](http://DavidWeekleyHomes.com)



See a David Weekley Homes Sales Consultant for details. Prices, plans, dimensions, features, specifications, materials, and availability of homes or communities are subject to change without notice or obligation. Illustrations are artist's depictions only and may differ from completed improvements. Copyright © 2021 David Weekley Homes - All Rights Reserved. POR, OR

**DavidWeekleyHomes.com**