

THE VERMILION



Exterior A

2,290 - 3,002 sq. ft.

3 - 5 Bedrooms

2 - 3 Full Baths

1 Half Bath

2 - 3 Car Garage



Exterior B

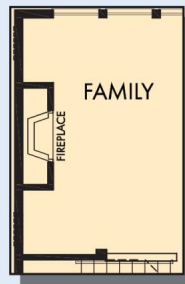


Exterior C

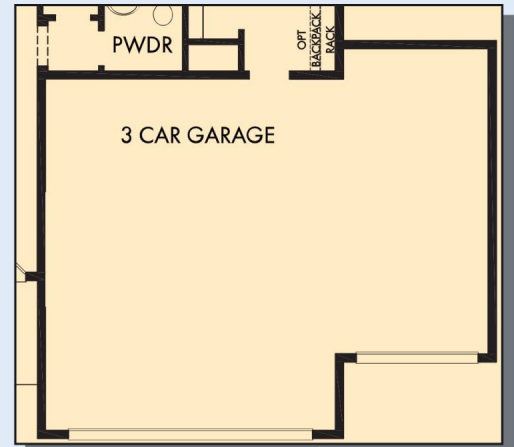
David Weekley
Homes

THE VERMILION

2,290 - 3,002 sq. ft. • 3 - 5 Bedrooms • 2 - 3 Full Baths • 1 Half Bath • 2 - 3 Car Garage



OPTIONAL
FIREPLACE
AT FAMILY



OPTIONAL 3 CAR GARAGE



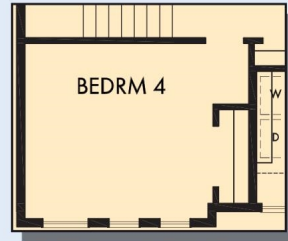
THE VERMILION



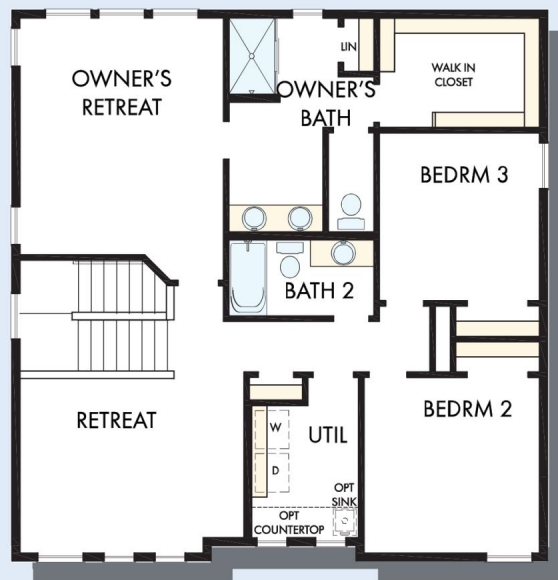
OPTIONAL SLID-IN TUB
WITH SEPARATE SHOWER
AT OWNER'S BATH



OPTIONAL SUPER
SHOWER AT
OWNER'S BATH



OPTIONAL BEDROOM 4
AT RETREAT

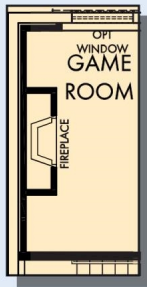


SECOND FLOOR

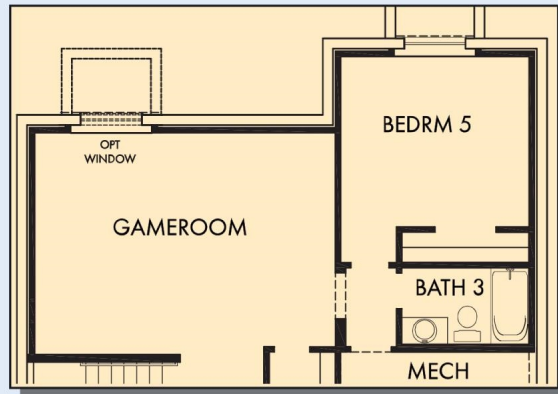
For additional options, please visit DavidWeekleyHomes.com

DavidWeekleyHomes.com

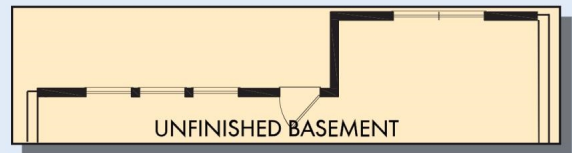
THE VERMILION



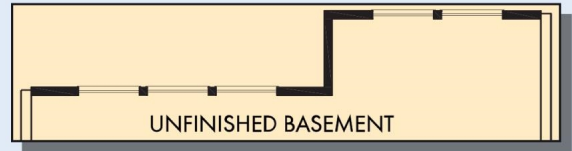
OPTIONAL
FIREPLACE AT
BASEMENT



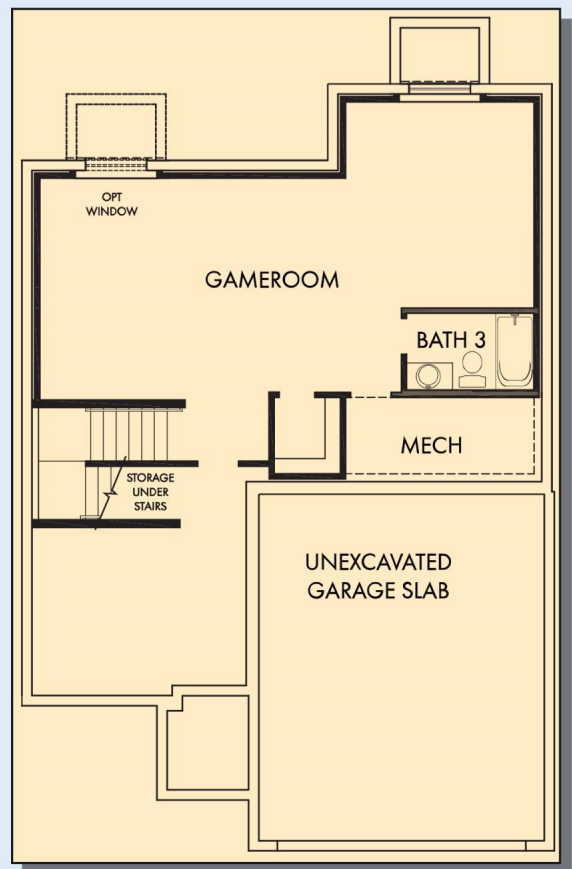
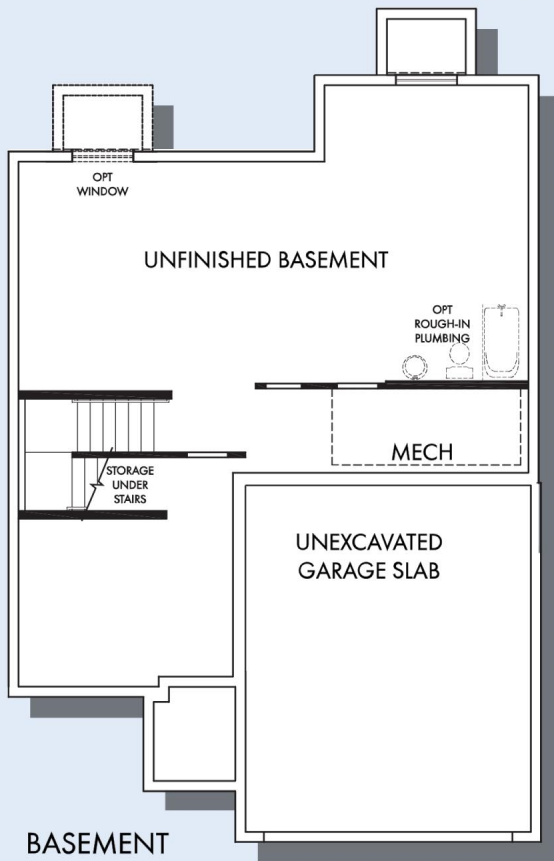
OPTIONAL GAMEROOM WITH BEDROOM 5 AND
BATH 3 AT BASEMENT



OPTIONAL WALK-OUT AT BASEMENT



OPTIONAL DAY LIGHT AT BASEMENT



OPTIONAL GAMEROOM WITH BATH 3 AT BASEMENT

For additional options, please visit DavidWeekleyHomes.com

DavidWeekleyHomes.com



See a David Weekley Homes Sales Consultant for details. Prices, plans, dimensions, features, specifications, materials, and availability of homes or communities are subject to change without notice or obligation. Illustrations are artist's depictions only and may differ from completed improvements. Copyright © 2020 David Weekley Homes - All Rights Reserved. Minneapolis/St. Paul, MN