

# THE NEIMAN



Exterior A

2,014 sq. ft.

3 - 4 Bedrooms

2 - 3 Full Baths

2 Car Garage



Exterior B

**Shane**



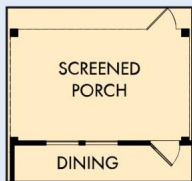
**We're living our fairytale thanks to David Weekley**

We can't say enough about the level of quality and care we received while building our home. Our builder was with us every step of the way to make sure our every need and desire was being met! The team truly went above and beyond at every turn to give us the home of our dreams! We will definitely recommend David Weekley to anyone looking to build a new home!

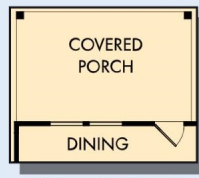
**Imagination**  
by David Weekley Homes

# THE NEIMAN

2,014 sq. ft. • 3 - 4 Bedrooms • 2 - 3 Full Baths • 2 Car Garage



OPTIONAL SCREENED PORCH AT DINING



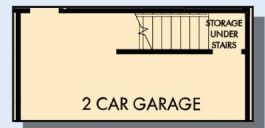
OPTIONAL COVERED PORCH AT DINING



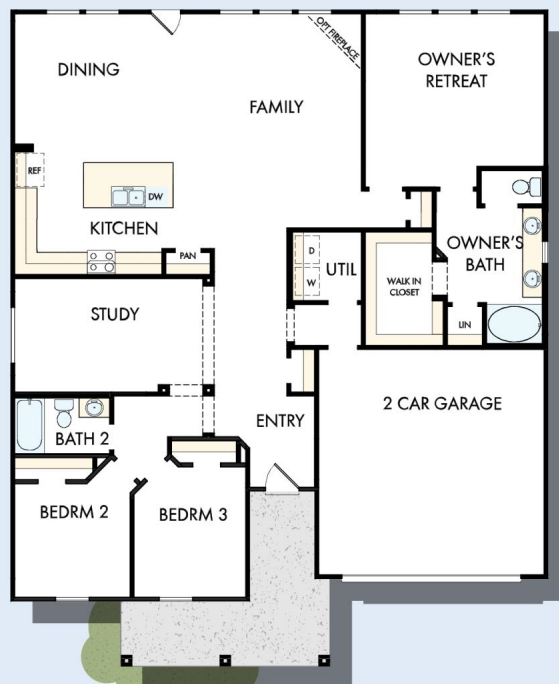
OPTIONAL SLIDE-IN TUB WITH SEPARATE SHOWER AT OWNER'S BATH



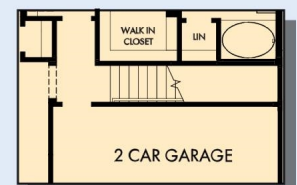
OPTIONAL EXTENDED SHOWER AT OWNER'S BATH



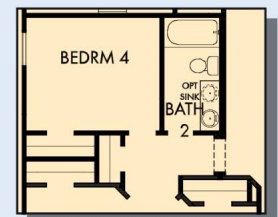
FIRST FLOOR WITH OPTIONAL SECOND FLOOR ATTIC STORAGE



FIRST FLOOR



FIRST FLOOR WITH OPTIONAL SECOND FLOOR BONUS



OPTIONAL BEDROOM 4 AT STUDY

7850 in 3607 CHA

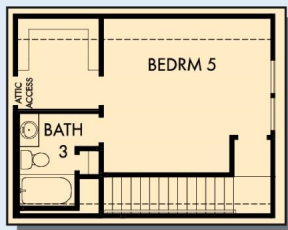
For additional options, please visit [DavidWeekleyHomes.com](http://DavidWeekleyHomes.com)

10/13/2020

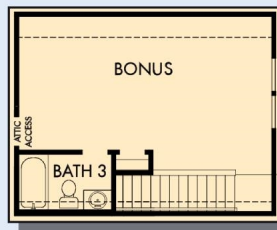
**Imagination**  
by David Weekley Homes



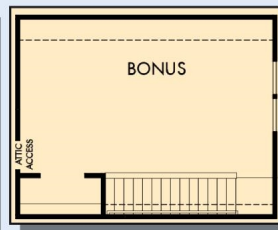
# THE NEIMAN



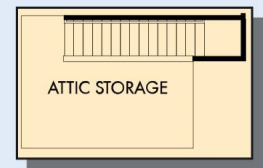
OPTIONAL BEDROOM 5 WITH BATH  
3 AT BONUS



OPTIONAL BATH 3 AT BONUS



OPTIONAL SECOND FLOOR BONUS



OPTIONAL SECOND  
FLOOR ATTIC STORAGE

For additional options, please visit [DavidWeekleyHomes.com](http://DavidWeekleyHomes.com)



See a David Weekley Homes Sales Consultant for details.  
Prices, plans, dimensions, features, specifications, materials,  
and availability of homes or communities are subject to  
change without notice or obligation. Illustrations are artist's  
depictions only and may differ from completed improvements.  
Copyright © 2020 David Weekley Homes - All Rights Reserved.  
Charlotte, NC

**Imagination**  
by David Weekley Homes