

THE HUNTMERE



6376 DAL - C

Exterior C

2,679 - 2,740 sq. ft.

4 Bedrooms

2 - 4 Full Baths

1 Half Bath

2 Car Garage



Exterior E

Gigi and Papa



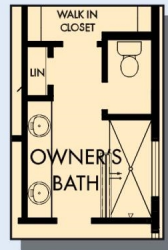
THE BESTest - Better than all the rest!

What an awesome and personal family-oriented company! From touring model homes to selecting "THE ONE" just for us, the experience was delightful and amazing! The entire David Weekley team has been exceptionally wonderful and always available to address any issues we encountered. We have been amazed and impressed by the "Service after the Sale" approach by the David Weekley staff. We would recommend David Weekley homes to anyone. We feel like we are an important member of the Weekley family!

**David Weekley
Homes**

THE HUNTMERE

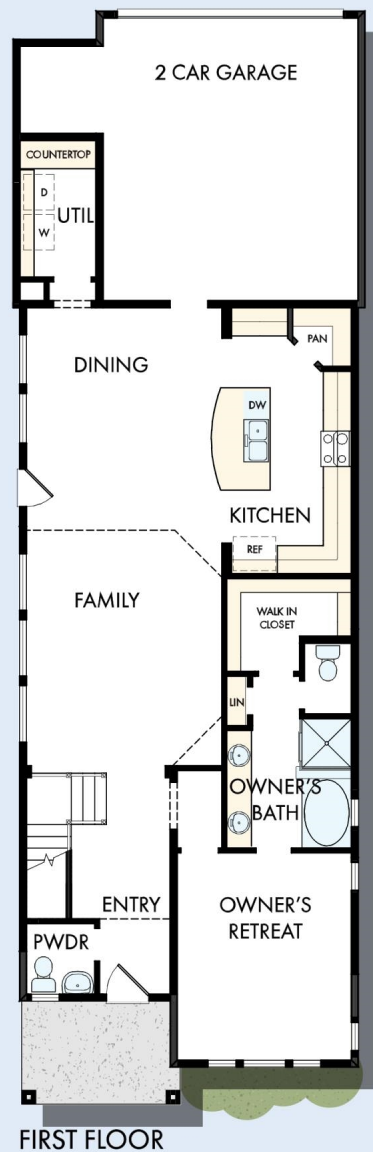
2,679 - 2,740 sq. ft. • 4 Bedrooms • 2 - 4 Full Baths • 1 Half Bath • 2 Car Garage



OPTIONAL
SUPER SHOWER
AT OWNER'S BATH



OPTIONAL DROP-IN
TUB WITH SEPARATE
SHOWER AT
OWNER'S BATH



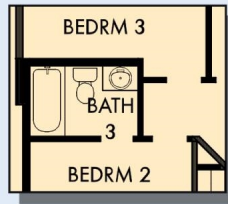
6376 in 1896 DAL

For additional options, please visit DavidWeekleyHomes.com

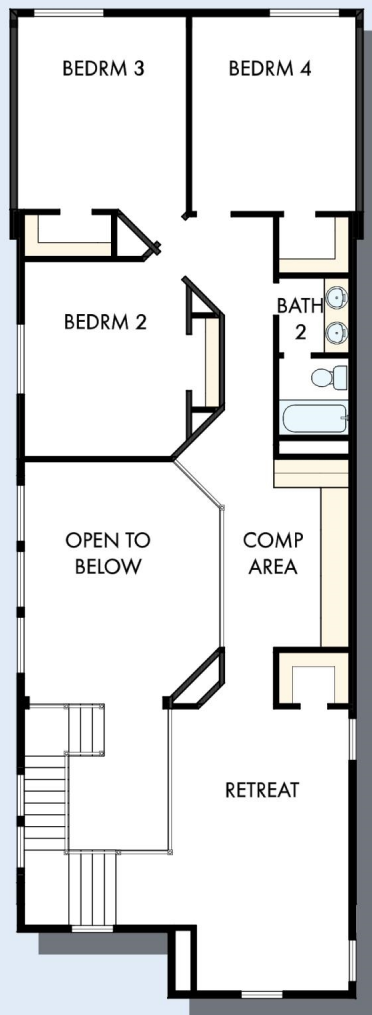
11/5/2020

DavidWeekleyHomes.com

THE HUNTMERE



OPTIONAL BATH 3
AT BEDROOM 3



SECOND FLOOR

For additional options, please visit DavidWeekleyHomes.com



See a David Weekley Homes Sales Consultant for details.
Prices, plans, dimensions, features, specifications, materials,
and availability of homes or communities are subject to
change without notice or obligation. Illustrations are artist's
depictions only and may differ from completed improvements.
Copyright © 2020 David Weekley Homes - All Rights Reserved.
Dallas/Ft. Worth, TX

DavidWeekleyHomes.com